

# PANDEMIC

## PUZZLES

“Say Goodbye to the Blues”

**GOAL:** Cure and eradicate BLUE by the end of the dispatcher's turn.

### SET-UP:

Infection Rate: N/A  
Outbreaks: N/A  
Cures Found: None

### INFECTED CITIES: *(all blue cubes)*

Essen: 2      St. Peters.: 1  
London: 2      San Fran.: 3  
New York: 1      Chicago: 2

### STARTING LOCATIONS:

Dispatcher: Baghdad  
Medic: Montreal  
Containment Spec.: Washington

It is the Dispatcher's turn...

**1**

**DISPATCHER**

- Move another player's pawn as if it were yours.
- As an action, move any pawn to a city with another pawn.

Get permission before moving another player's pawn.



**2**

**MEDIC**

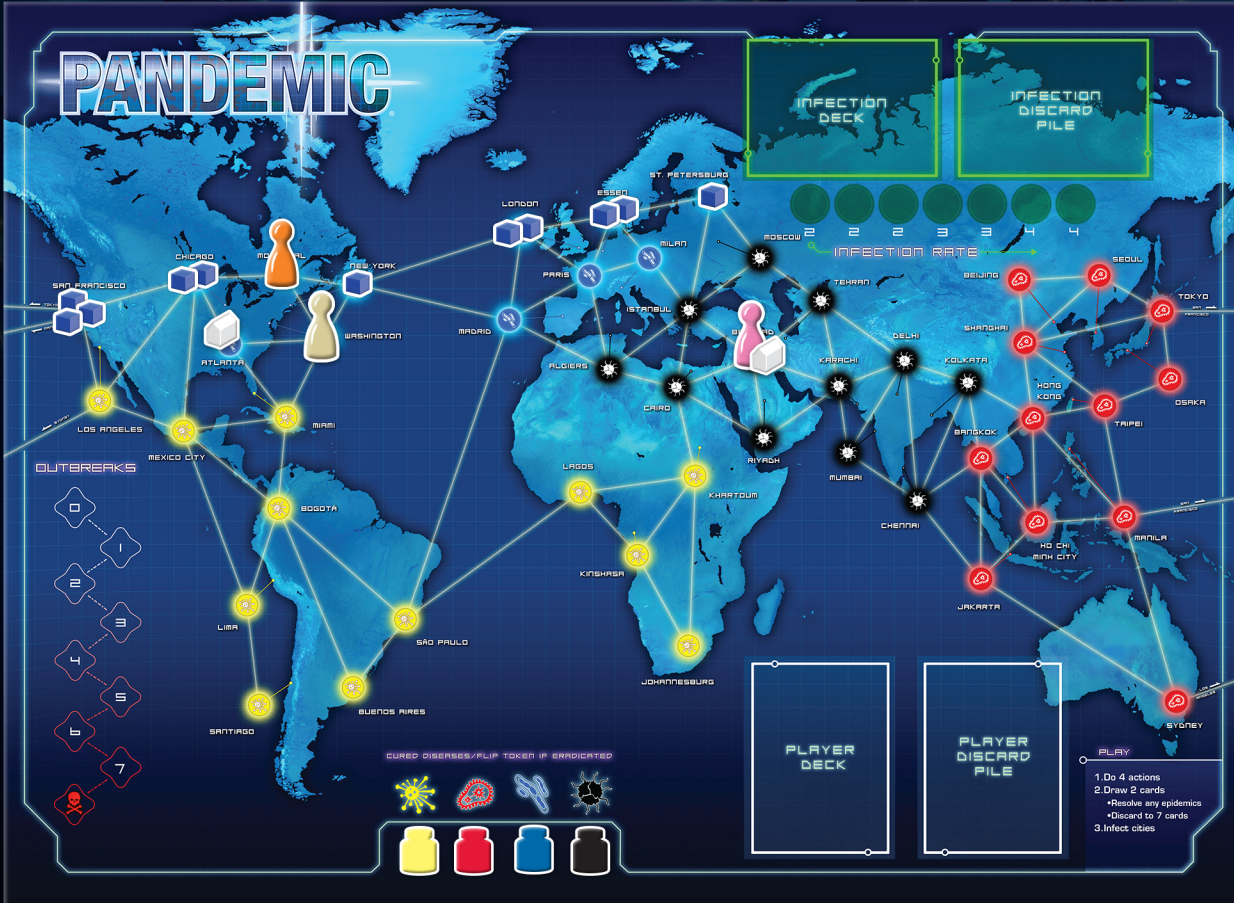
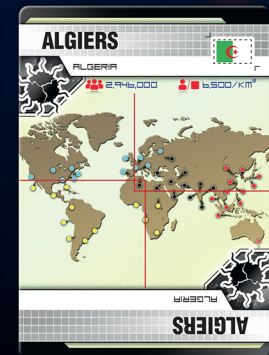
- Remove *all* cubes of one color when doing Treat Disease.
- Automatically remove cubes of cured diseases from the city you are in (and prevent them from being placed there).



**3**

**CONTAINMENT SPECIALIST**

- When you enter a city with 2 or more disease cubes of the same color, remove 1 of them.







**WARNING!**  
THE NEXT PAGE CONTAINS THE  
SOLUTION TO THE PUZZLE.

# SOLUTION

## THE DISPATCHER'S TURN:

1. Using the Dispatcher's ability, discard the Washington card to fly the Containment Specialist to London or Essen. When the Containment Specialist enters either city 1 blue cube will be removed because of the Containment Specialist's ability.
2. Discover the Blue cure at the Research Station in Baghdad discarding the remaining 5 Blue cards in the Dispatcher's hand.
  - Use the **Rapid Vaccine Deployment** event card from the Medic's hand (with permission of course. I sure hope they give it or you won't complete this puzzle.)
    - \* Using the event card remove the 5 remaining cubes on St. Petersburg, Essen, London, and New York
3. Using the Dispatcher's ability, move the Medic to Chicago. The cubes will automatically be removed because of the Medic's ability.
4. Using the Dispatcher's ability, move the Medic to San Francisco. The cubes will automatically be removed because of the Medic's ability.