



AZUL

A GAME BY MICHAEL KIESLING

SUMMER PAVILION MINI





At the turn of the 16th Century, King Manuel I commissioned Portugal's greatest artisans to construct grandiose buildings. After completing the Palaces of Evora and Sintra, the king sought to build a Summer Pavilion to honor the most famous members of the royal family. This construction was intended for the most talented artisans—whose skills meet the splendor that the royal family deserves.

Sadly, King Manuel I died before construction ever began.

*In **Azul – Summer Pavilion Mini**, players return to Portugal to accomplish the task that never began.*

As a master artisan, you must use the finest materials to create the Summer Pavilion while carefully avoiding wasting supplies. Only the best will rise to the challenge to honor the Portuguese royal family.

GAME SETUP

1. Each player takes a **player board (A)** and places it in front of them, so that the side with the colored stars is face up. (See *Variant play #1* on page 10 to play with the monochrome side of the player board.) Then each player sets the **scoring slider (B)** on the 5th space of their scoring track.
2. Place the **Factory displays (C)** in a circle around the center of the table:
 - In a 2-player game: place 5 Factory displays.
 - In a 3-player game: place 7 Factory displays.
 - In a 4-player game: place 9 Factory displays.

Note: You may lay out the Factory displays in the plastic travel tray.

3. Place the **supply board (D)** next to the Factory displays. Then set the **round counter slider (E)** on the space for round 1. The slider indicates not only the current round, but also the wild color for the round, which will be explained on the next page. In the first round, purple is the wild color.
4. Fill the **bag** with the 132 **tiles (F)**. Draw 10 tiles blindly from the bag and lay them out at random on the **supply spaces (G)** shown in the center of the supply board.
5. Fill each Factory display with exactly 4 tiles also drawn randomly from the bag. Put the bag aside for now.
6. Place the **start player token (H)** in the center of the table.
7. Place the **depot (I)** near the Factory displays and the supply board, in a way that every player can see the end of game scoring chart.

Return any unused player boards and Factory displays to the box.





OBJECT OF THE GAME

To be the player with the most points at the end of the game. The game ends after 6 rounds have been played, and the final scoring has taken place.

GAMEPLAY

Each round consists of the following phases:

Phase 1: Acquire tiles

Phase 2: Play tiles and score points

Phase 3: Prepare the next round (this phase is not needed in the last round)

The youngest player begins and play proceeds in clockwise order. Several turns will be played per round.

THE WILD COLOR

In each round, one of the 6 tile colors is a wild color. The round counter slider shows in which round a color is considered wild. Tiles in that color are helpful in that round because they may be used to replace tiles of any other color.

Note: If you have taken tiles in the wild color, they can only be used as wild tiles in the current round. In subsequent rounds, the tiles in this color are no longer wild, because the wild color changes every round!



PHASE 1: ACQUIRE TILES

On your turn, you **must** pick tiles. To do so you have two choices:

A) Pick **all tiles of the same color**, which is **not** the wild color this round, from any one **Factory display** and place them next to your player board. Move the remaining tiles from this Factory display to the center of the table.

If there are one or more tiles of the wild color on the Factory display, you **must** additionally take **exactly one** of these wild tiles.

If there are **only** tiles of the wild color on the Factory display you have chosen, you are only allowed to take **one** wild tile.

OR

B) Pick **all tiles of one color**, which is **not** the wild color in this round, from the **center of the table** and place them next to your player board. If there are one or more tiles of the wild color in the center of the table, you **must** additionally take **exactly one** of these wild tiles. If there are **only** tiles of the wild color in the center of the table, you are only allowed to take **one** wild tile.

If you are the first player in this round to pick tiles from the center of the table, take the start player token, placing it next to your player board. You immediately **lose points** corresponding to the number of tiles (not including the start player token) you have picked **this turn**. Adjust your scoring slider on your score track accordingly.

If your scoring slider is already at "0", you may still pick tiles from the center of the table without losing more points.

THE START PLAYER TOKEN

The player who has the start player token will be the first player to place their tiles on their board in Phase 2; and they will start the following round. This gives them the advantage of choosing tiles from the Factory displays first, according to the normal rules.

After placing the tiles you have taken next to your player board, play proceeds to the next player in clockwise order.



TURN EXAMPLE

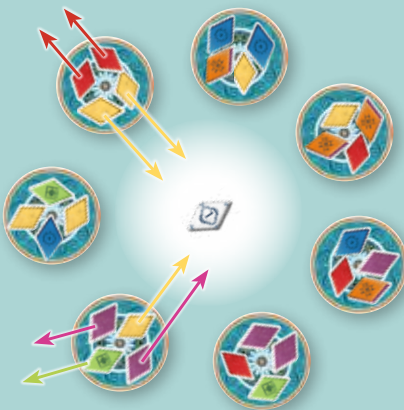


In round 1, the wild color is purple.

Ina picks both red tiles from a Factory display. Because there are no tiles of the wild color, she may not pick any other tiles.

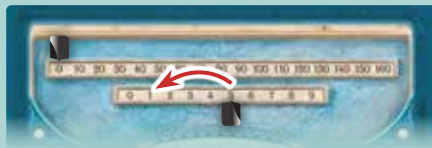
She then moves the remaining yellow tiles to the center of the table.

Andrea takes a green tile from another Factory display. Because there are tiles of the wild color on the display, she also takes a purple tile and moves the remaining two tiles to the center of the table.



Tom picks the three yellow tiles from the center of the table. He additionally takes a wild tile.

Because he is the first player to take tiles from the center of the table, he must also take the start player token and move his scoring slider 4 spaces backwards.



Phase 1 ends when all Factory displays AND the center of the table contain no more tiles. Then, continue with Phase 2.

PHASE 2: PLAY TILES AND SCORE POINTS

The starting player begins. When it's your turn, first check that you have the **right number** of tiles in the **needed color** next to your player board to play in a space. If you have enough tiles, then place **exactly one** of these tiles on to the corresponding space of your player board. Discard the other tiles that were needed into the **depot** (see examples A and B on page 8). Play then proceeds to the next player in clockwise order. This process is repeated until no player wishes to or is able to place more tiles.

RULES FOR PLACEMENT OF TILES:

- You may only place tiles from those which are next to your own player board.
- Tiles may only be placed on the diamond-shaped spaces on your player board. Do not place tiles on pillars, statues or windows.
- You may only place tiles on empty spaces.
- The spaces are arranged in a star shape. The color of a star indicates which color tiles may be placed there. The numbers on the space indicate the total number of tiles which are needed to be collected before you may place **one single tile** on that space (see examples on page 8). All other tiles that were needed to play on this space must be discarded into the depot.
- On the star in the center of the player board, there are no restrictions to where each colored tile may be placed, but all 6 tiles placed must be different colors.
- Tiles that you do not place during a turn should be kept next to your player board.



WILD COLOR USE

If you do not have enough tiles, or you do not want to use all your tiles of the needed color, you may use tiles of the current wild color instead. In this case, you must have at least one tile of the color you want to place. All other needed tiles are then discarded into the depot.

HINT ON THE USE OF THE WILD TILES:

Wild tiles may replace any other chosen color. In this case, you must combine them with a tile matching the color of the space you wish to play on (see the examples C-E on page 8).

A tile of the wild color may never be placed on a space whose color it replaces. A tile of the wild color may only be placed onto a space of a matching color on the player board (for example, a purple tile on a purple space, see the example on the right).

EXAMPLE:

- Tom **combines** one or more purple wild tiles with his green tile, and places the green tile on space '4' of the green star.
- If he **does not combine** his wild tiles with another color, he may use them only for the star matching the color of the wild tiles, in this case purple.

In both cases, he could have placed the tile on the star in the center of his player board if this color is not yet represented there.



SCORING

For **each tile** that you **place** on your player board, you receive 1 point. Move your scoring slider one space forward on your scoring track.

If you place a tile **next to one or more connected tiles**, you receive **1 point for each of these tiles** (see examples B-E on page 8). Only spaces that are next to one another on a star are counted as connected spaces.

An additional scoring bonus, in the form of **additional tiles** from the **supply spaces** on the supply board, is received when:

- ... you surround the 4 adjacent spaces of a **pillar** with tiles. You must then immediately take any **one** tile of your choice.
- ... you surround the 4 adjacent spaces of a **statue** with tiles. You must then immediately take any **two** tiles of your choice. If available, these may both be wild tiles.
- ... you surround the 2 adjacent spaces of a **window** with tiles. You must then immediately take any **three** tiles of your choice. If available, these may all be wild tiles.



Place the bonus tiles you received next to your player board.

Before the next player's turn, fill up the empty supply spaces on the supply board with tiles from the bag. If the bag is empty, refill it with all the tiles contained in the depot and continue to fill the empty spaces.

PASSING

If you do not wish to or cannot place tiles on your turn, you must pass. You may choose up to **4 tiles** from those next to your player board to keep into the next round. Place these on the four spaces in the corners of your player board. They do **not** score points.

Any other tiles you have left must be discarded into the depot, and you lose 1 point on the scoring track for each of these discarded tiles (see example F on page 8).

You can no longer take turns in this round.



SCORING EXAMPLES

In round 1, the wild color is purple.

A: Ina has 7 blue tiles next to her player board, which she can use to play on space '6' of her blue star. To do this, she uses 6 blue tiles, placing one on space '6' of her blue star and discarding the other 5 tiles into the depot.

Ina scores 1 point this turn.

She can use the remaining blue tile later. So she leaves it next to her player board.



B: Ina has 3 red tiles next to her player board, which she can use to play on space '3' of her red star. She places one tile on space '3' and discards the other 2 into the depot.

For this she scores 1 point, because there are no other tiles connected to this space on the red star.



C: Andrea has 3 blue and 3 purple wild tiles next to her player board, which she can use to play on space '6' of her blue star.

She places one blue tile onto her player board on space '6' and discards the 2 blue and 3 purple tiles into the depot.

Andrea scores 3 points this turn because there are 2 other tiles connected to this space.



D: Andrea has 1 orange, 1 green and 3 purple wild tiles available to play. She uses the 3 purple tiles as wild tiles and places the orange tile on space '4' of her orange star, discarding the 3 purple tiles into the depot and scoring 3 points.

Andrea may decide to keep the green tile for the next round, when green is the wild color.



E: Charlotte has 2 purple wild tiles, 2 red tiles, and 4 green tiles available to play.

She places one purple tile on space '2' of her purple star and discards the other purple tile, scoring 3 points. She saves her remaining tiles to be used on her other turns in the same round.



F: Charlotte has 4 green and 2 red tiles.

She passes and takes the 4 green tiles with her into the next round, in which green is the wild color, by placing them on the four spaces in the corners of her player board.

She discards the 2 red tiles into the depot and loses 2 points on her scoring track.



PHASE 3: PREPARE THE NEXT ROUND

This task is performed by the start player.

If you have not yet reached round 6, advance the round slider on to the next round, in which you will start. If you are already in round 6, then move directly to the end of the game (*see next page*).



Otherwise, fill up the Factory displays with exactly 4 new tiles each, drawn randomly from the bag.

If the bag is empty, refill it with all the tiles contained in the depot and then continue to fill up the Factory displays. In the rare case that the bag is empty and there are no more tiles in the depot, start the next round as usual even though not all the Factory displays could be filled. Place the start player token back into the center of the table.

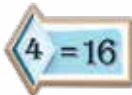
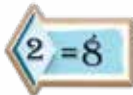
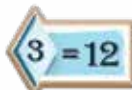
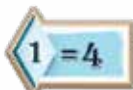
Now all players move any tiles they have collected in the corners of their player board, placing them **next** to their player board.

END OF THE GAME

The game ends after 6 rounds. Then players check to see if they meet the following goals and adjust their scoring slider accordingly.

- If you completed the **multicolored** star (in the center of your player board), score 12 points.
- If you completed the **red** star, score 14 points.
- If you completed the **blue** star, score 15 points.
- If you completed the **yellow** star, score 16 points.
- If you completed the **orange** star, score 17 points.
- If you completed the **green** star, score 18 points.
- If you completed the **purple** star, score 20 points.

- If you covered **all 1's**, score 4 points.
- If you covered **all 2's**, score 8 points.
- If you covered **all 3's**, score 12 points.
- If you covered **all 4's**, score 16 points.



After the final round, if you have tiles on the spaces in the corners of your player board that you haven't used, discard them into the depot and lose 1 point per tile.

Whoever has the most points is the winner. In the case of a tie, players share the victory.



VARIANT PLAY #1

For a slightly different play, all players remove their player board from the plastic tray and flip them on their other side showing the monochrome stars. Then they all slide their player board back in their plastic tray. The rules are identical to those of the normal game, with the following exceptions:

- During the game, **you** have the **choice** of which colors you place in the star shapes (for all 7 stars).
 - ◇ If you choose to make a multicolored star, all 6 tiles must have a **different color**, as in the normal game.
 - ◇ If you choose to make a single-colored star, all tiles must be the **same color**.
- More than one star in a color, or more than one multicolored star, are allowed. You receive points for these stars as described in the normal rules.
- Note that the numbers on the stars are different on the other side of the player board.



VARIANT PLAY #2

The back side of the supply board has a different rounds counter graphic. To change the order of the wild color, you can flip the supply board in its plastic tray. None of the other game rules change.





CREDITS

Designer: Michael Kiesling
Producer: Martin Bouchard
Editing: Pierre-Olivier Gravel & Martin Roy
Illustration: Chris Quilliams
Graphic Design: Emeline D'Aoust & Adrian Harper

Next Move would like to give special thanks to Stephen Yau for his collaboration in the design of *Azul–Summer Pavilion Mini*.

Development by:



© 2024 Plan B Games Inc.

All rights reserved.

No part of this product may be reproduced without specific permission.

4001 F.-X.-Tessier, suite 100,
Vaudreuil-Dorion QC J7V 5V5
Canada

info@planbgames.com
www.nextmovegames.com

Made in China

SCORING REFERENCE



1 = 4	2 = 8			
3 = 12	4 = 16			