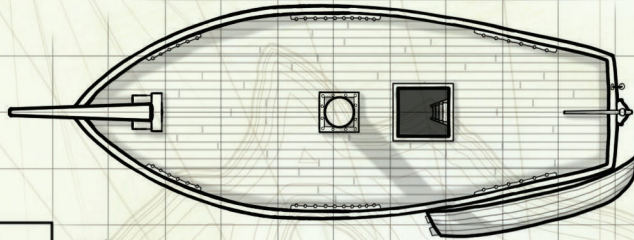


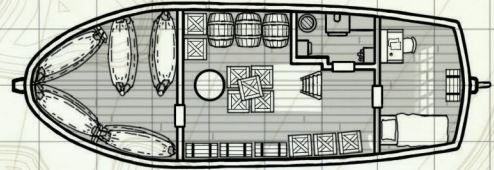
LA FOLIE D'HAZEL

Pont supérieur

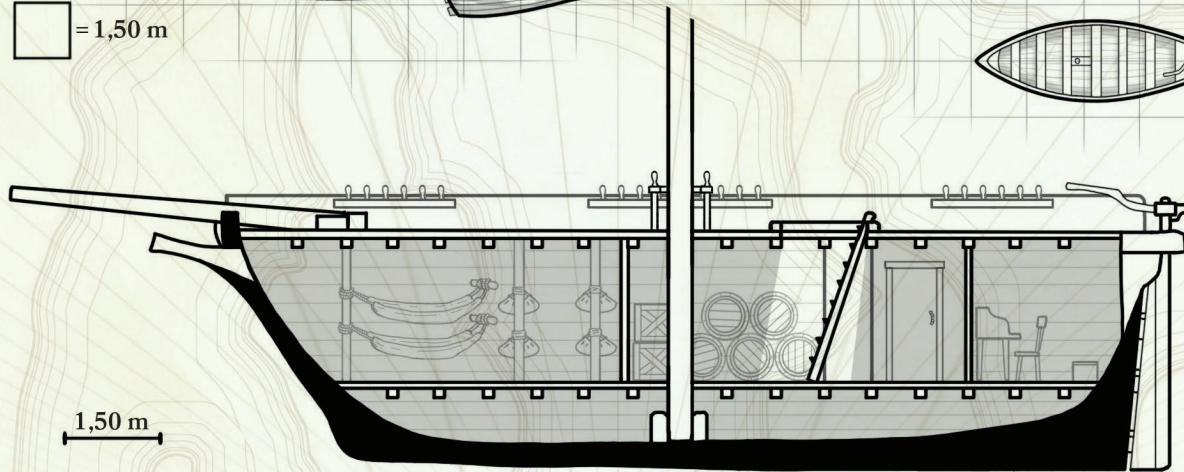


□ = 1,50 m

Pont inférieur

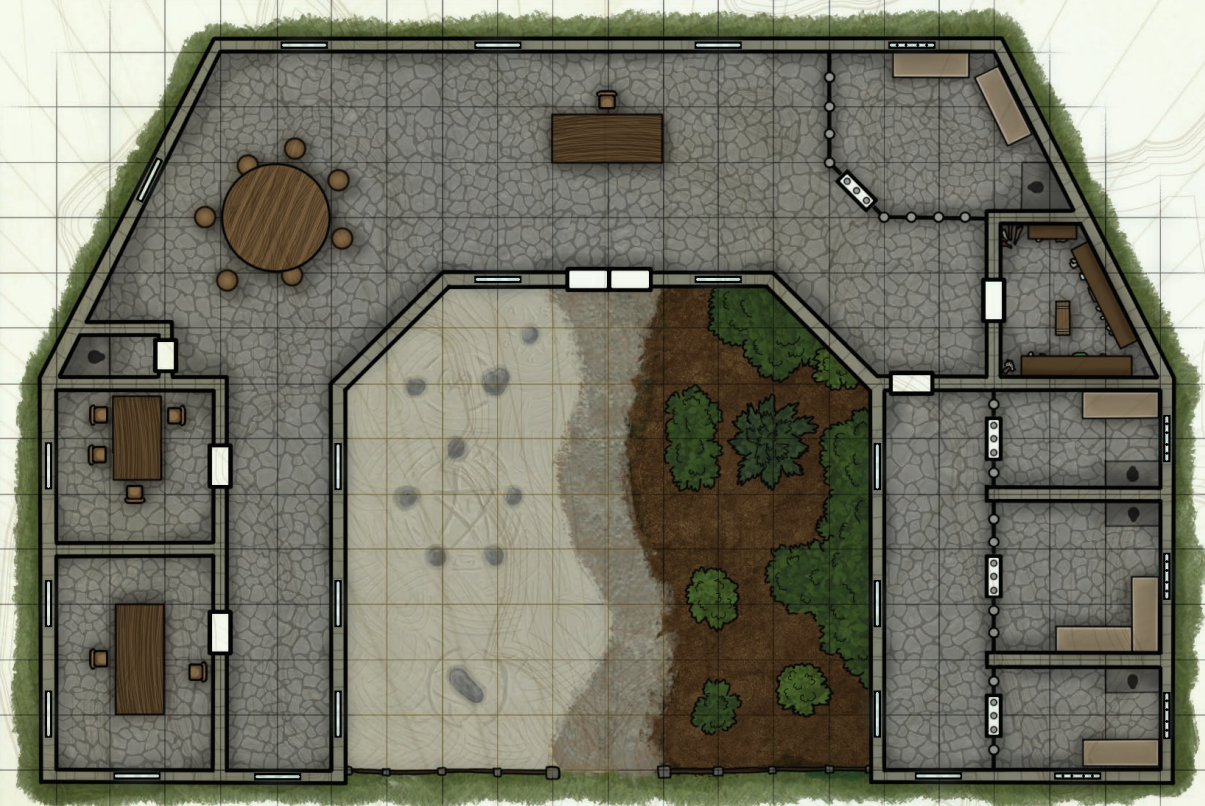


Chaloupe



1,50 m


LA PRISON



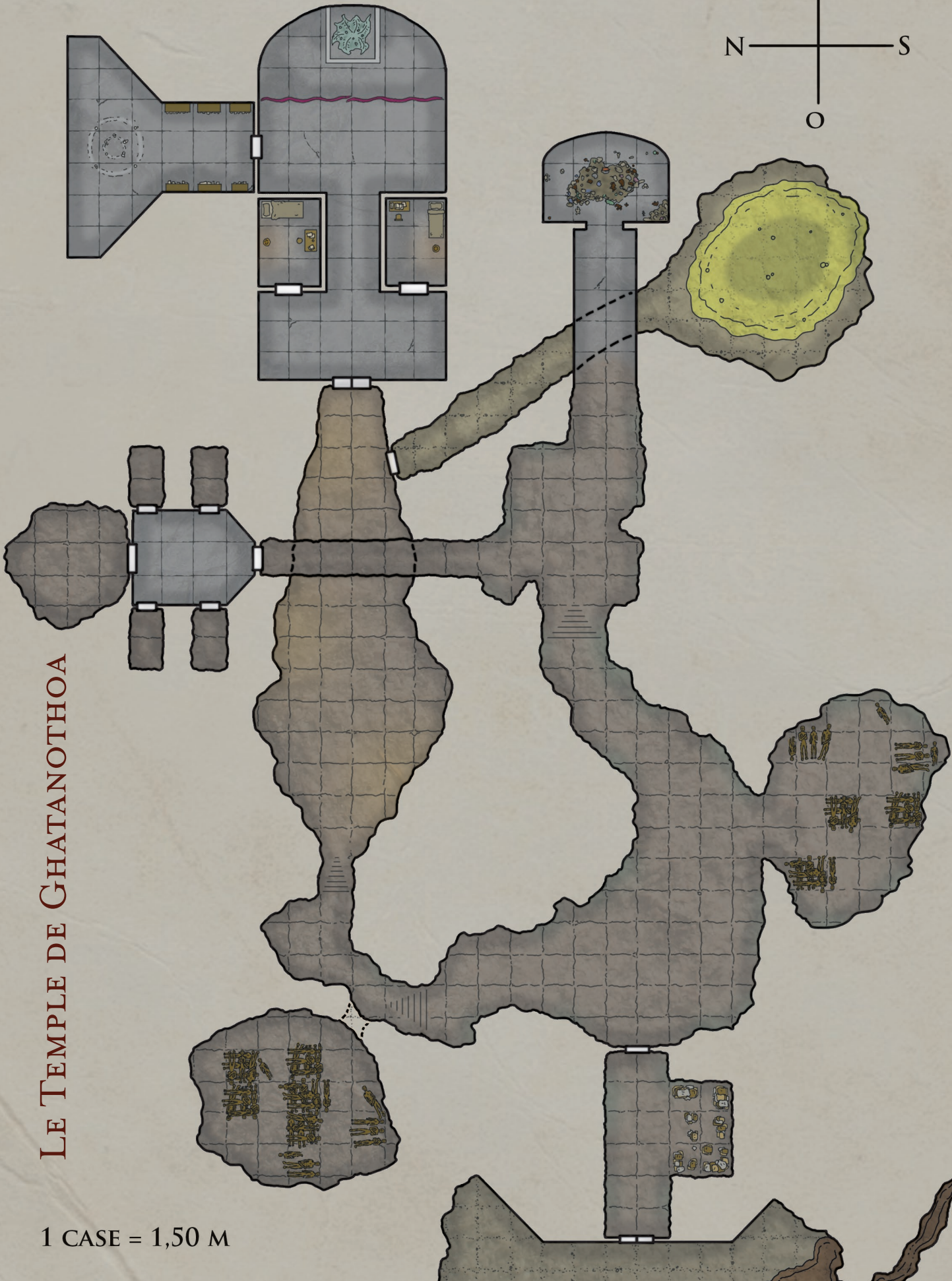
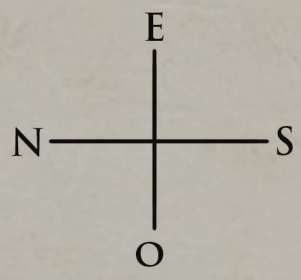
1 case = 3 m



LES TUNNELS VOLCANIQUES

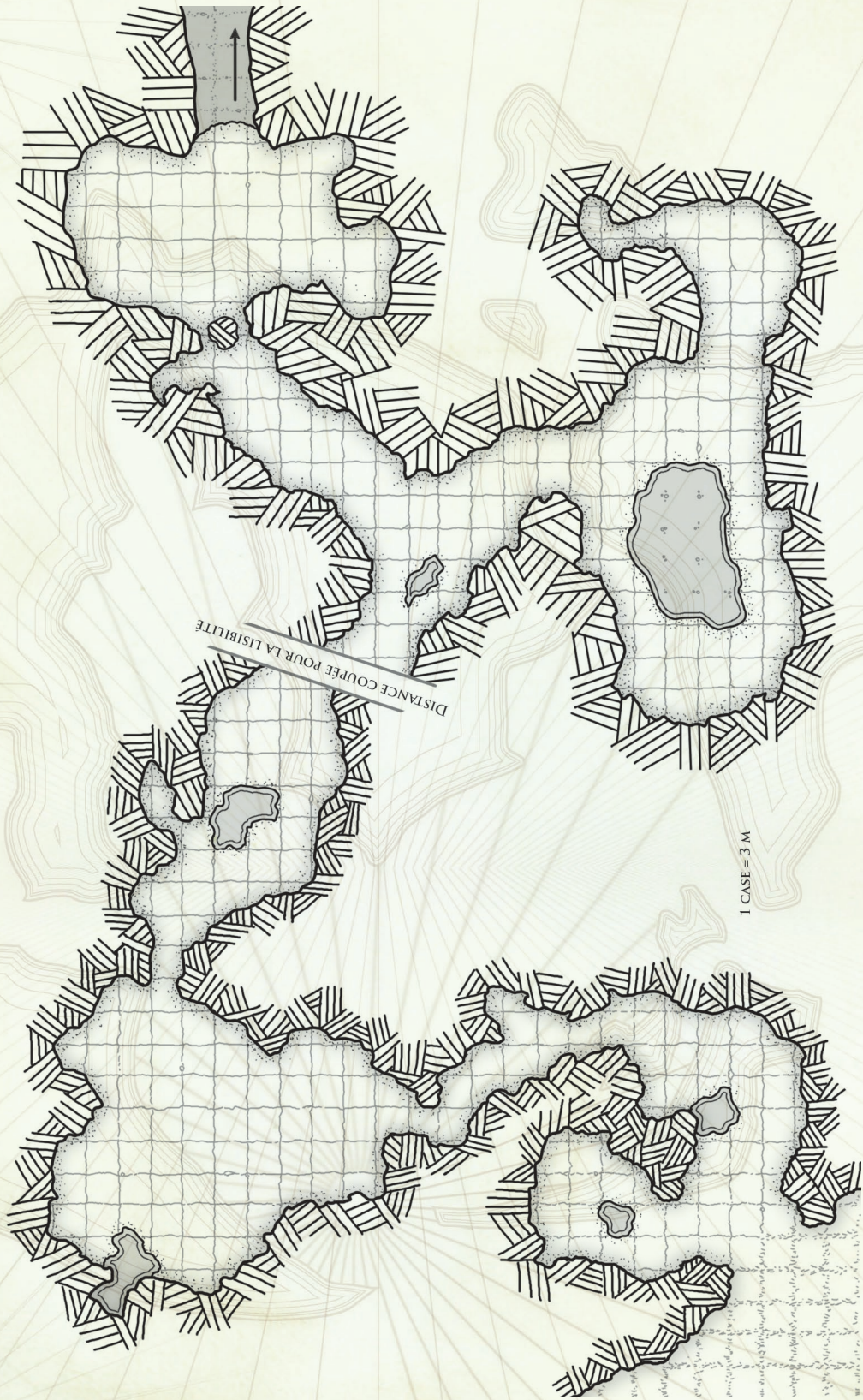
 = 1,5 m





LE TEMPLE DE GHATANOTHOA

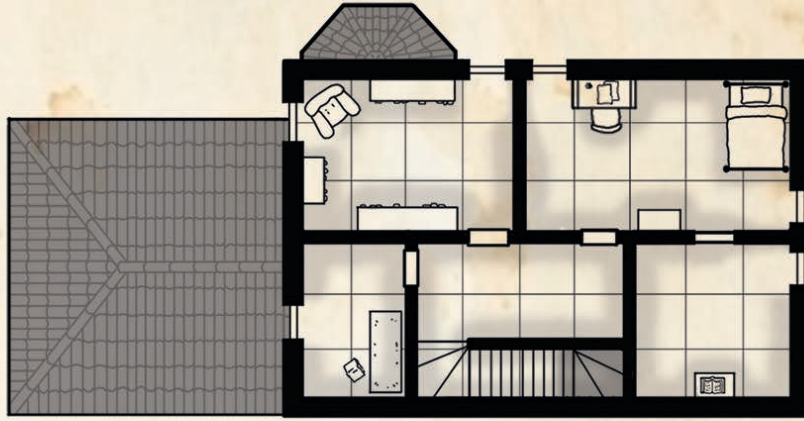
1 CASE = 1,50 M



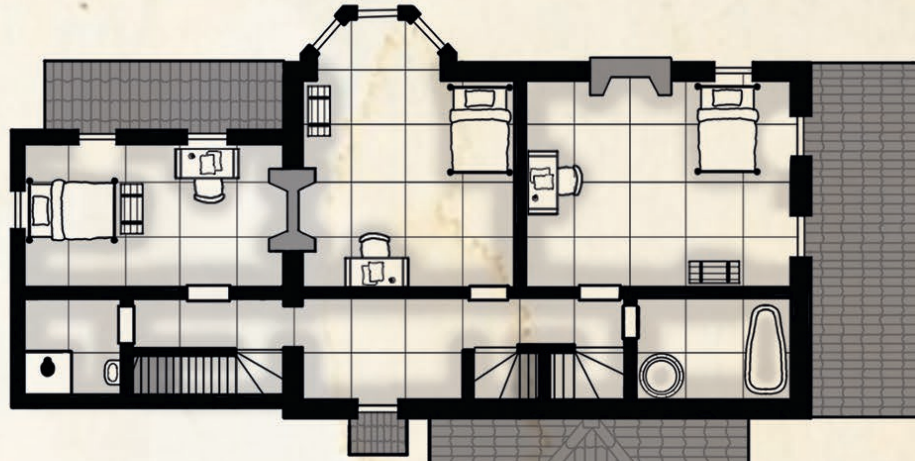
LA CAVERNE

L'Albatros

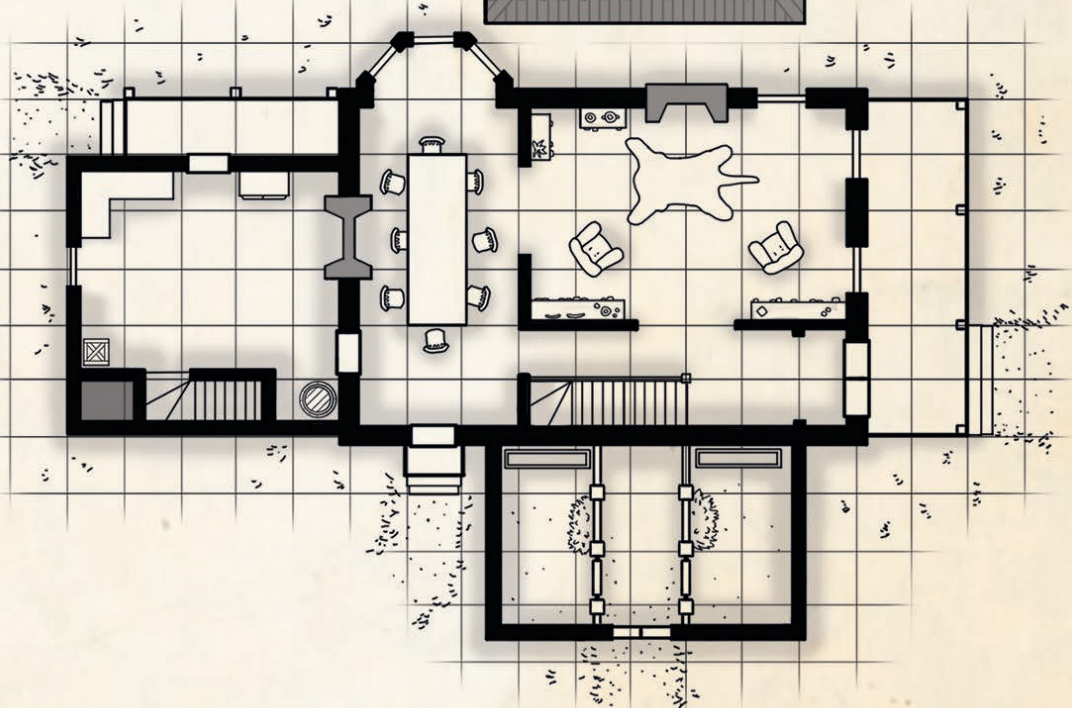
2^E ÉTAGE



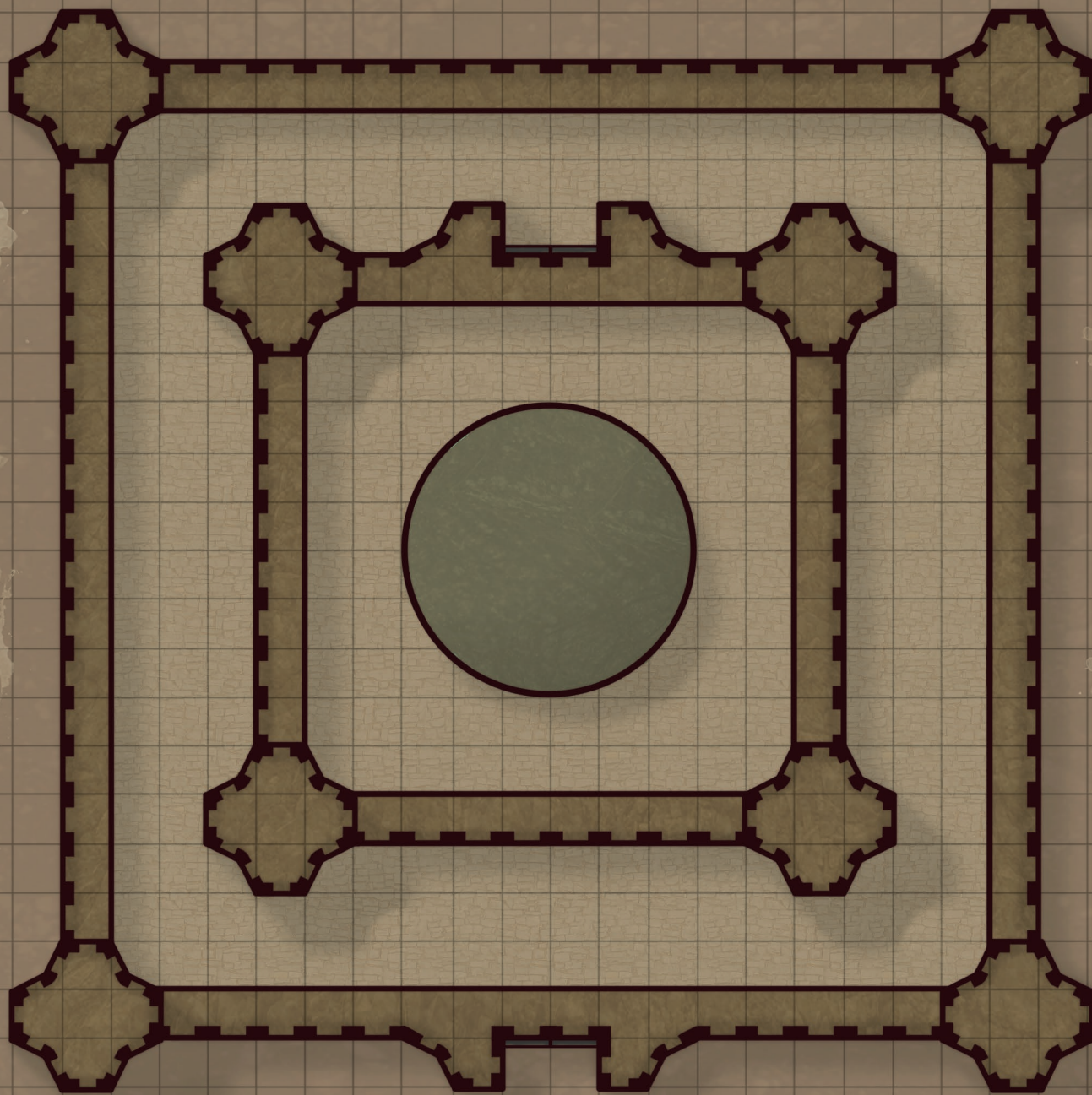
1^{ER} ÉTAGE



REZ-DE-CHAUSSÉE

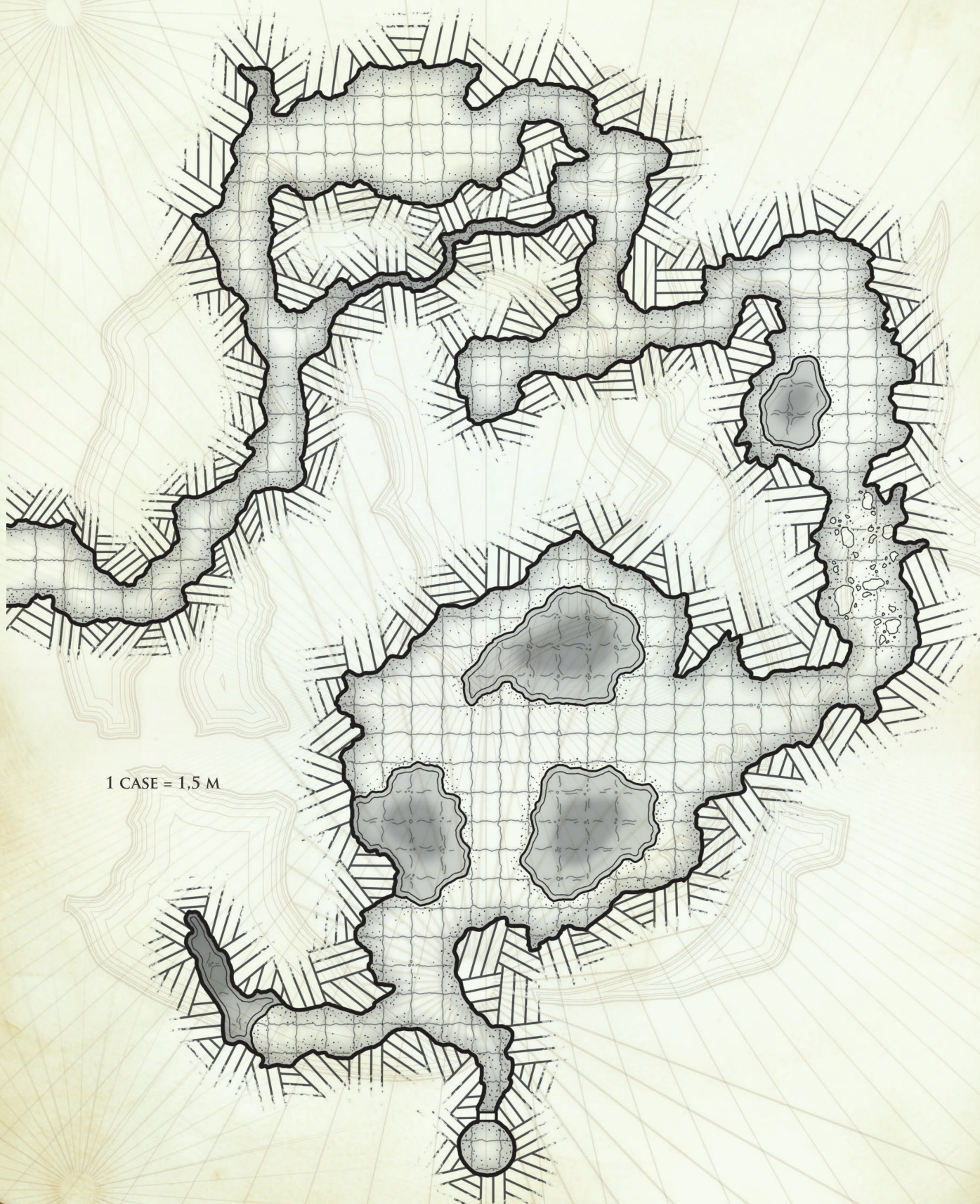


LA CITADELLE



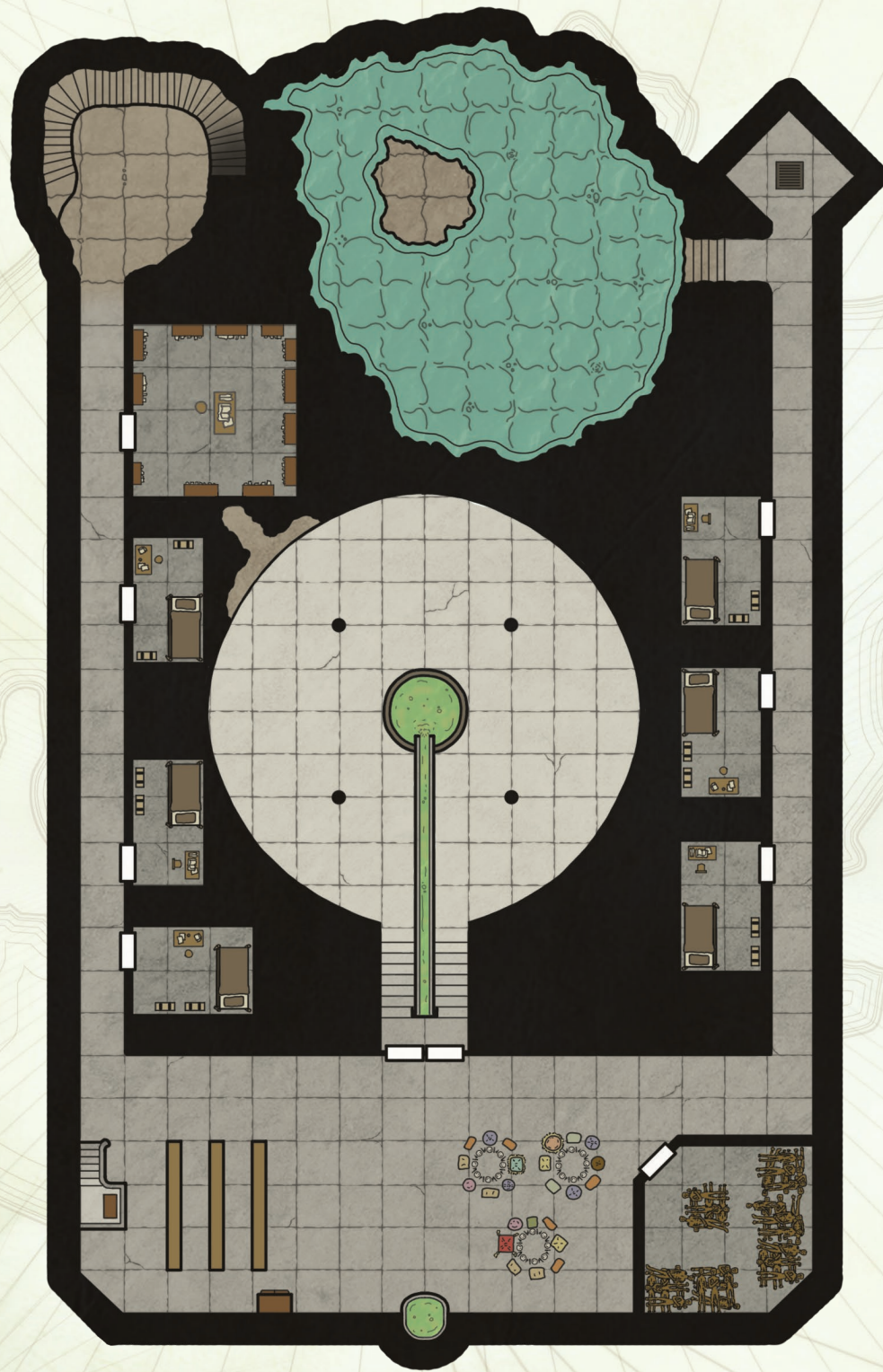
1 CASE = 3 M

LES TUNNELS VERS LA CITADELLE

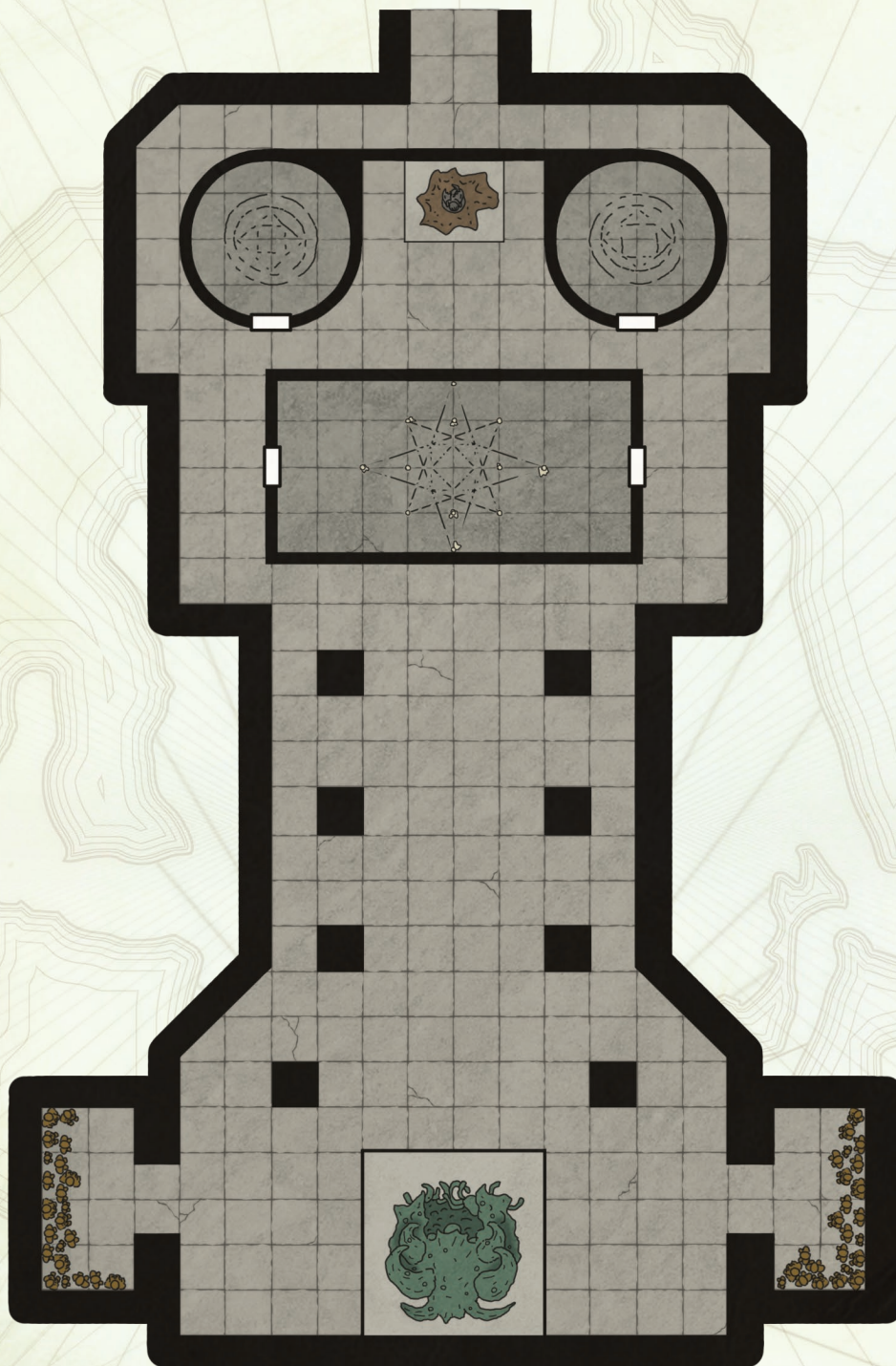


1 CASE = 1,5 M

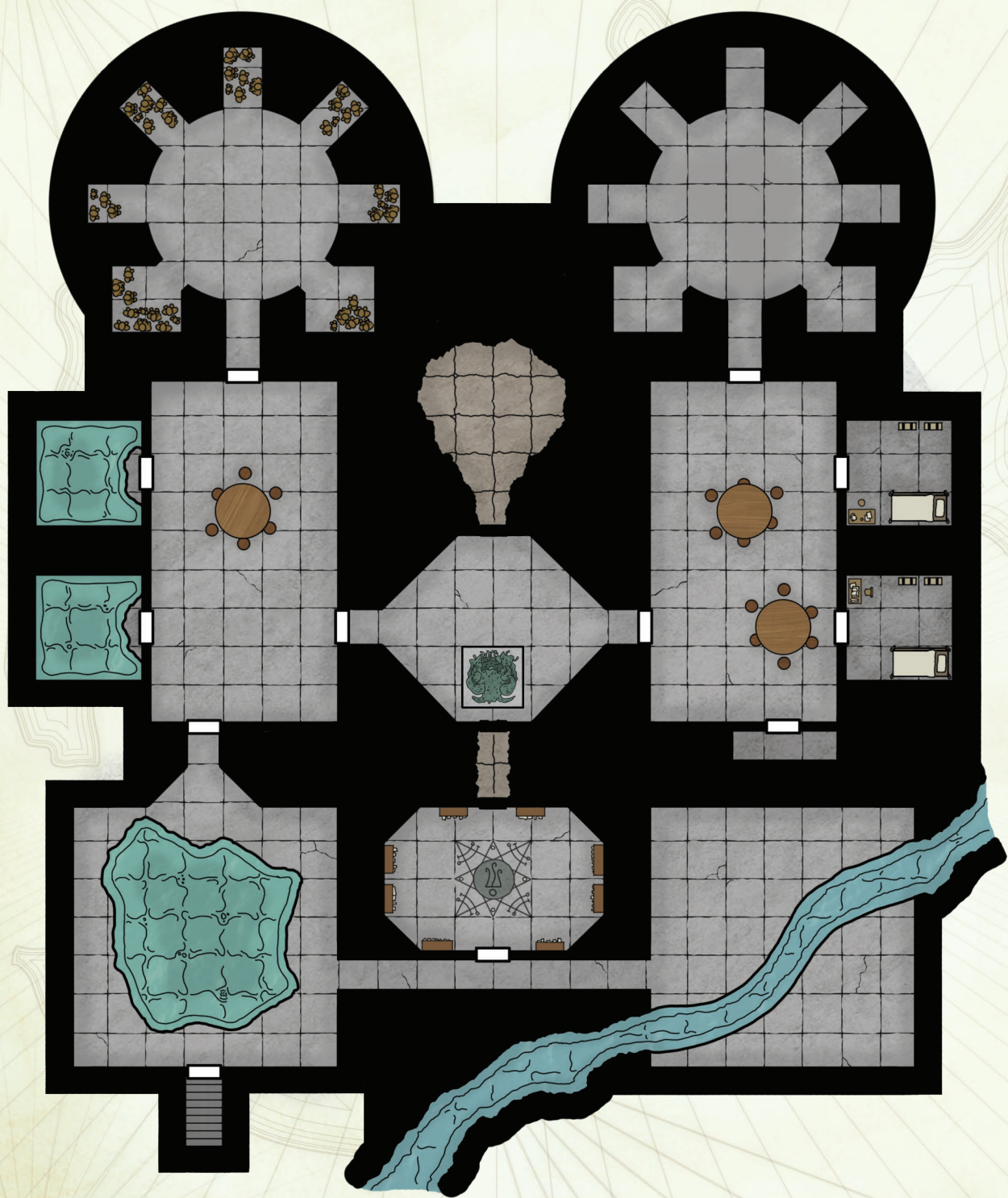
LA CITADELLE (DEUXIÈME SOUS-SOL)



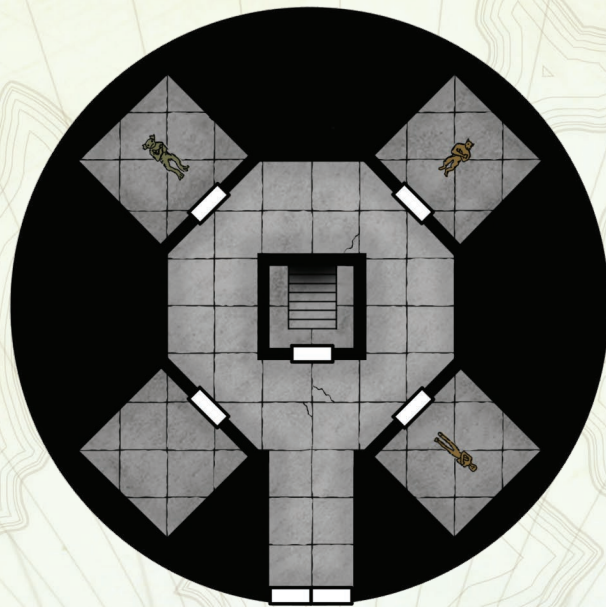
LA CITADELLE (SOUS-SOL)



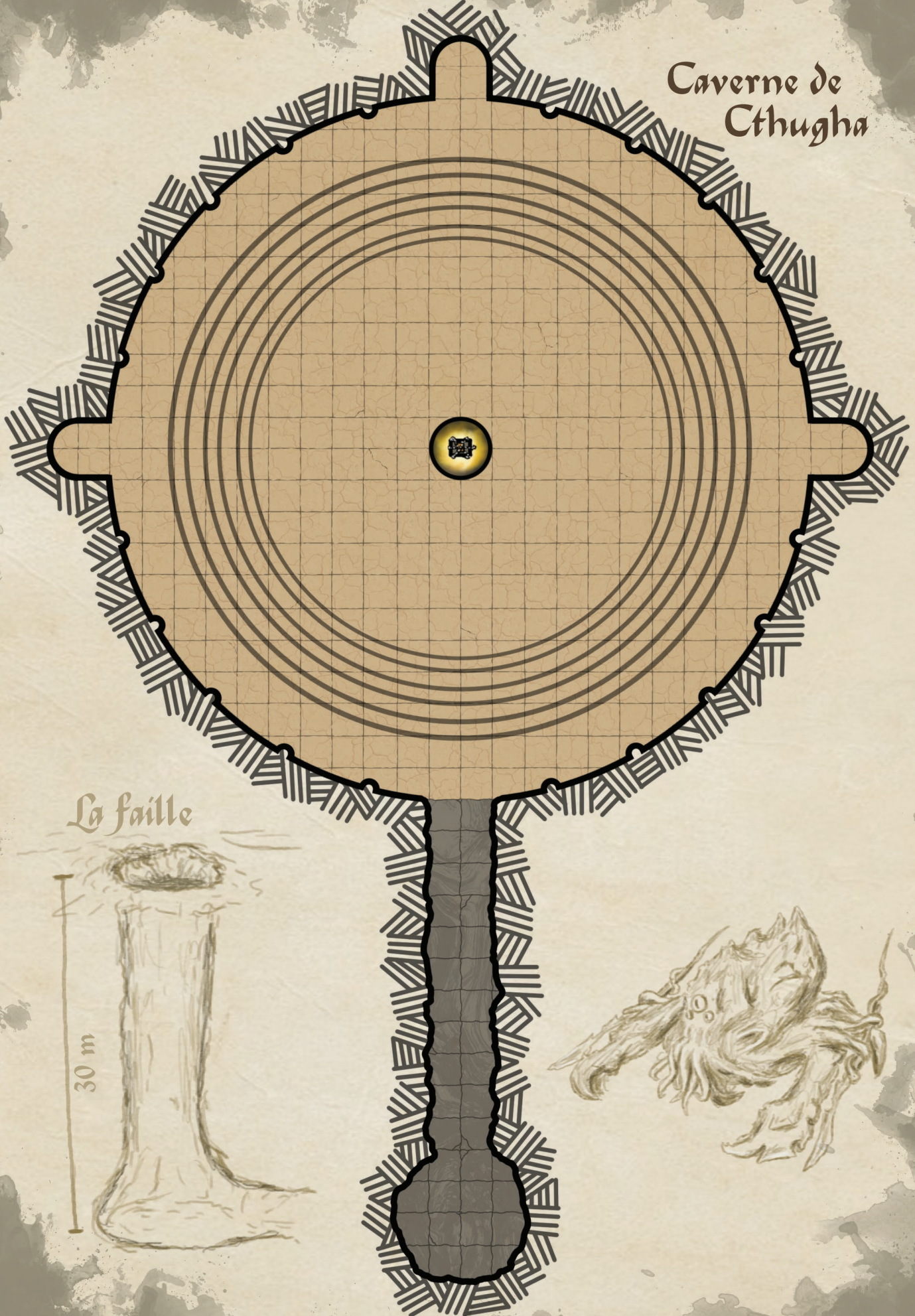
LA CITADELLE (NIVEAU PRINCIPAL)



LA CITADELLE (REZ-DE-CHAUSSÉE)



Caverne de
Cthugha



La faille



Phare de Farzeen



1 case = 1,5 m