

MARVEL
CRISIS
PROTOCOL
 MINIATURES GAME
CP106

READ THIS FIRST

Be sure to use a pair of sharp hobby clippers to remove the miniature components from the frame. Carefully clean the excess material and mold lines with a sharp hobby knife. Check the fit of each part before gluing. Use a small amount of hobby plastic glue to assemble the components. Use caution with all products and follow all manufacturer instructions. Adult supervision is recommended for children under the age of 16. Have fun!

JOIN THE COMMUNITY

Use #PaintingProtocol to share your miniature photos and be a part of the Marvel: Crisis Protocol community!



AtomicMassGames



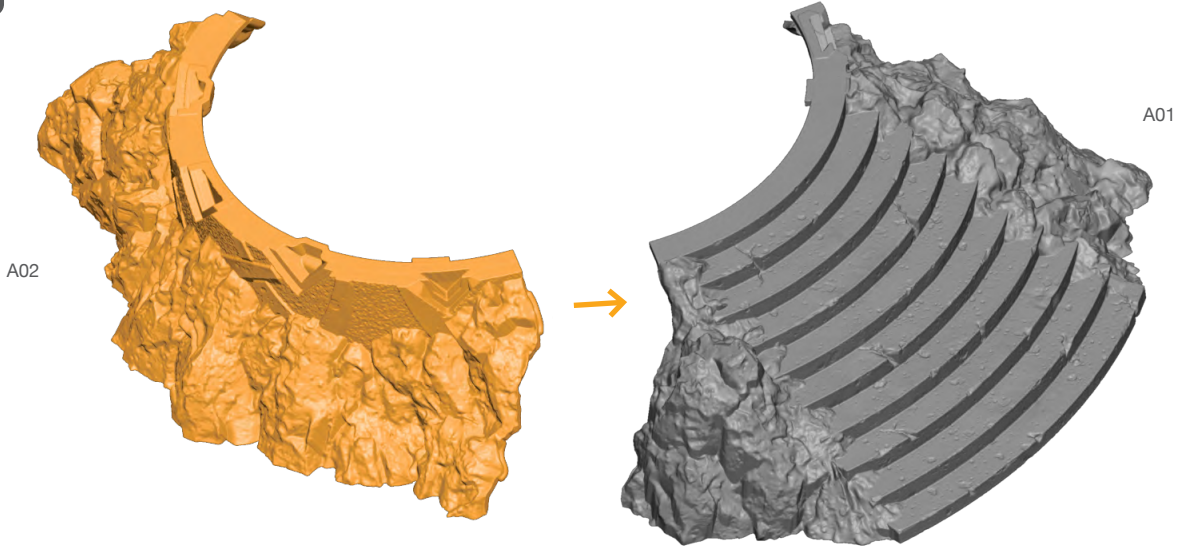
AtomicMassGames



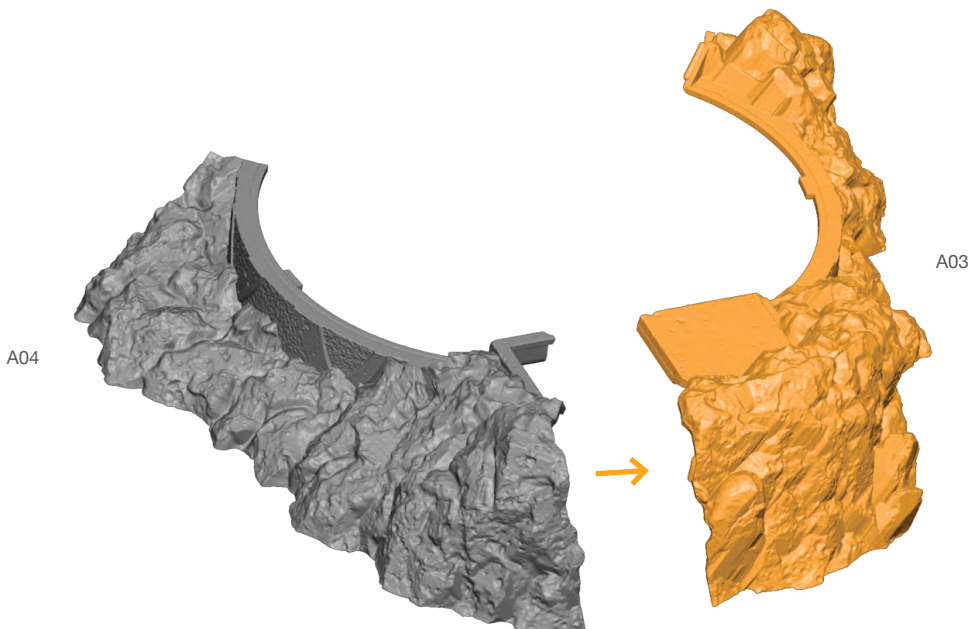
Atomic_Mass_Transmissions

TOWER (A) ASSEMBLY GUIDE

Step 1



Step 2



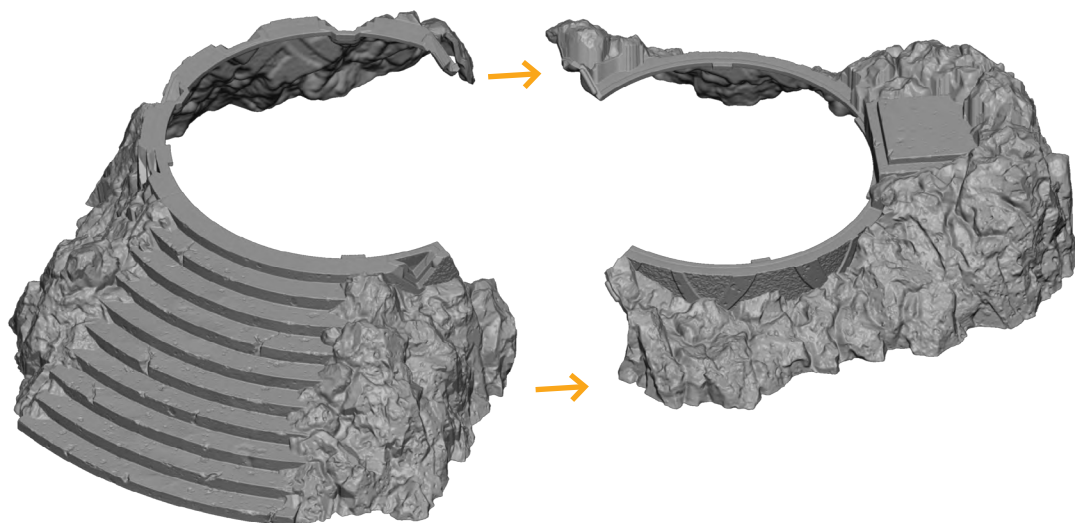
Permission granted to print or photocopy for personal use.



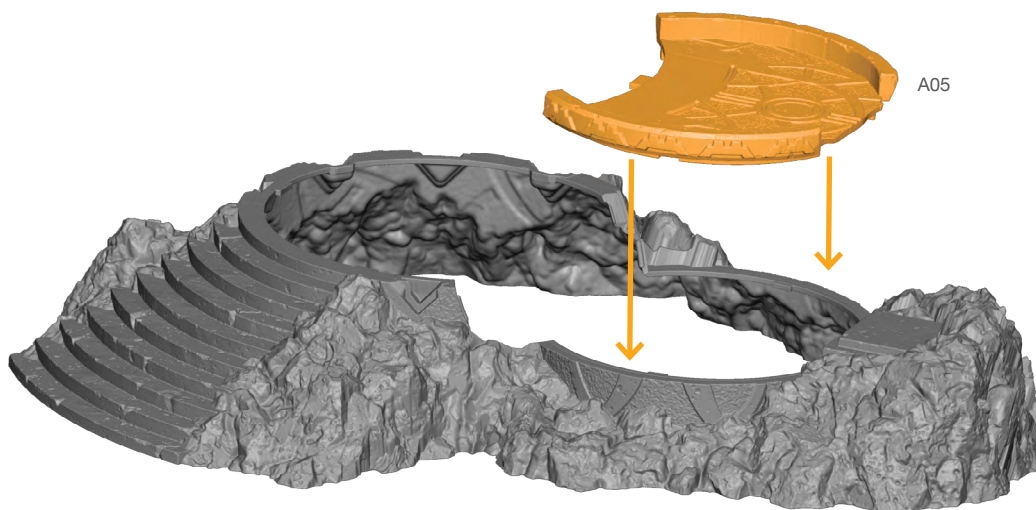
Atomic Mass Games and logo are TM of Atomic Mass Games.
 Atomic Mass Games, 1995 County Road B2 W, Roseville, MN, 55113, USA, 1-651-639-1905.
 Actual components may vary from those shown.

TOWER (A) ASSEMBLY GUIDE (CONTINUED)

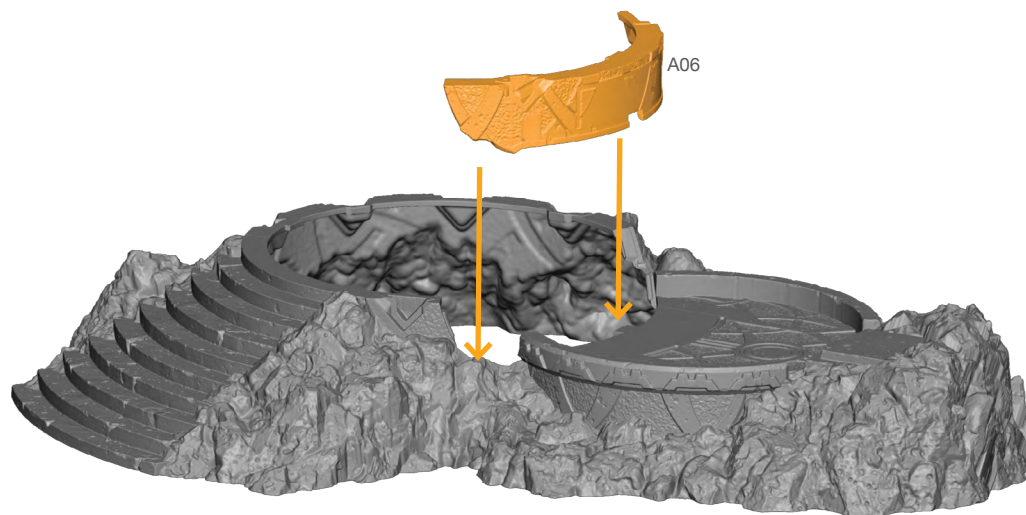
Step 3



Step 4



Step 5



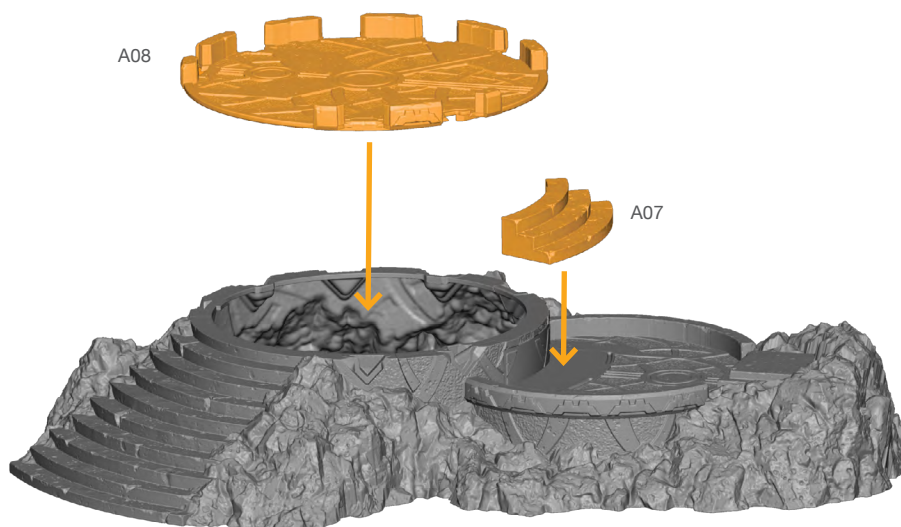
Permission granted to print or photocopy for personal use.



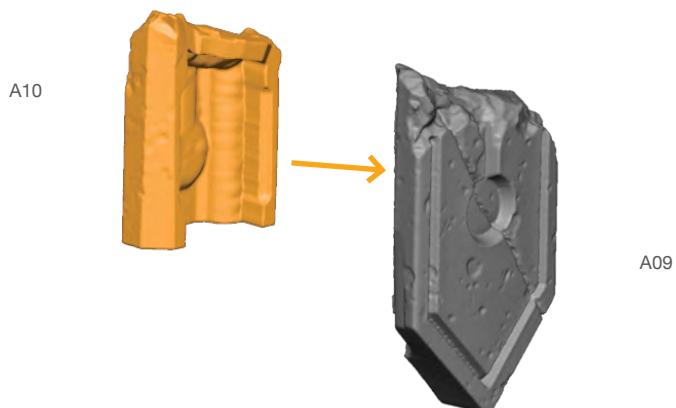
Atomic Mass Games and logo are TM of Atomic Mass Games.
Atomic Mass Games, 1995 County Road B2 W, Roseville, MN, 55113, USA, 1-651-639-1905.
Actual components may vary from those shown.

TOWER (A) ASSEMBLY GUIDE (CONTINUED)

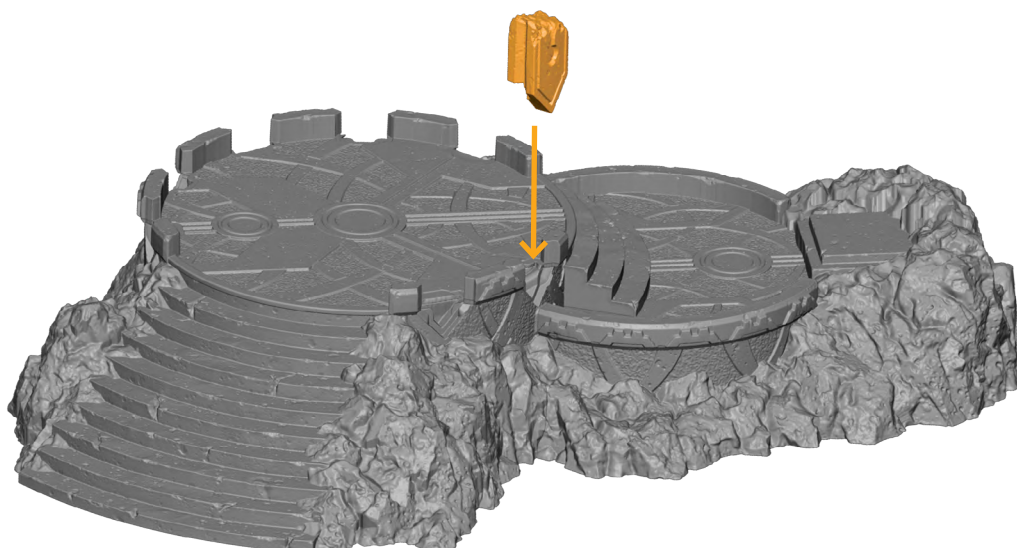
Step 6



Step 7



Step 8

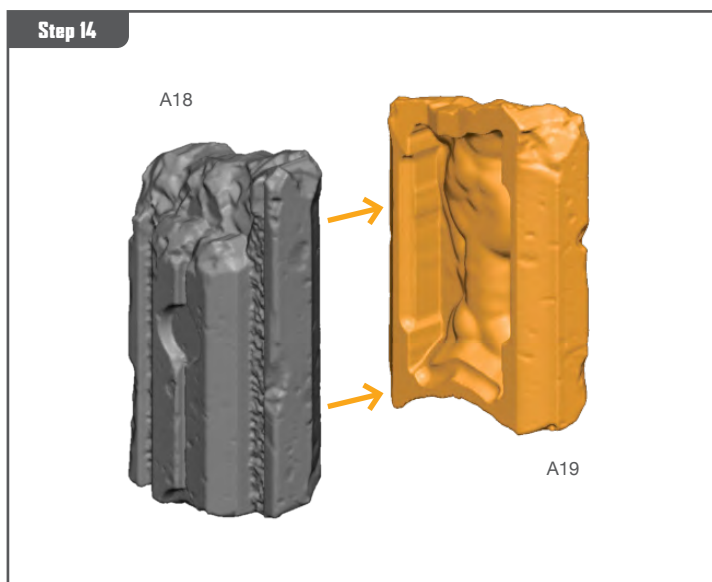
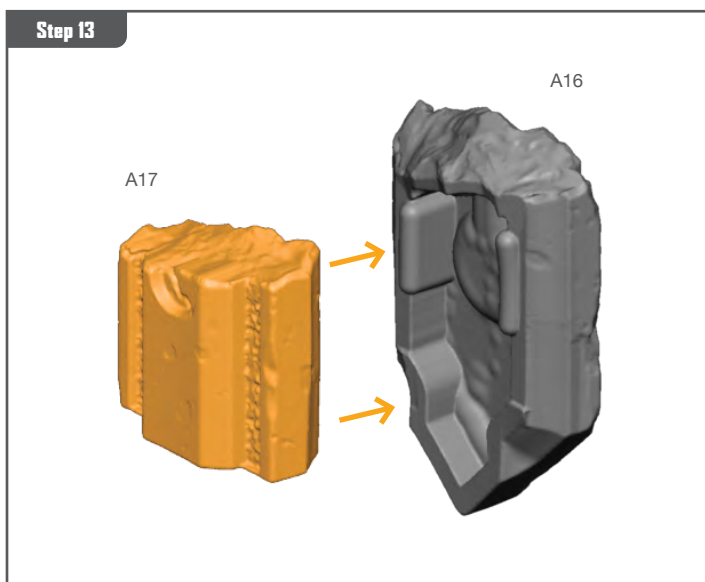
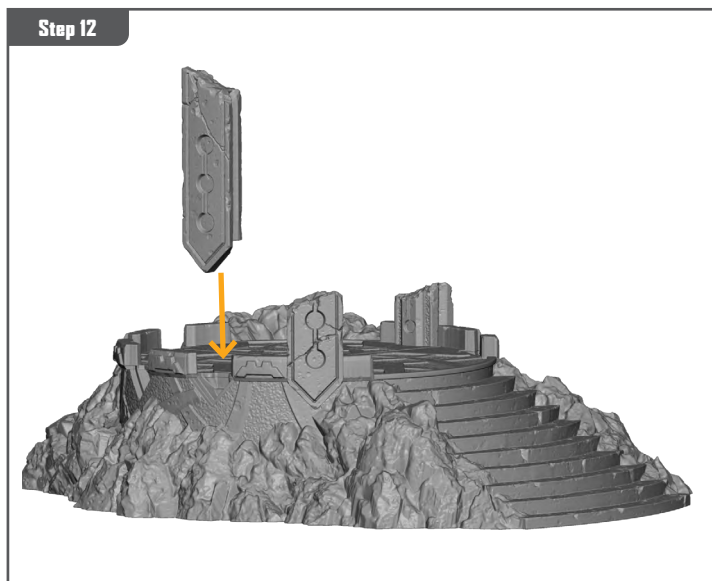
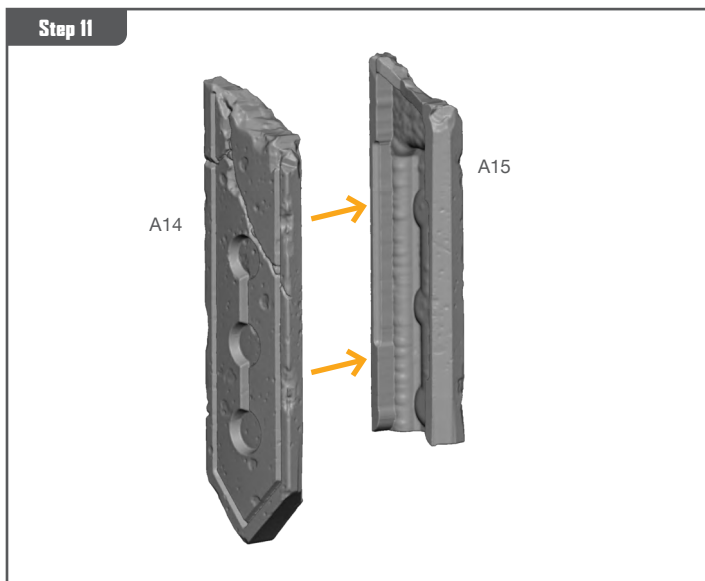
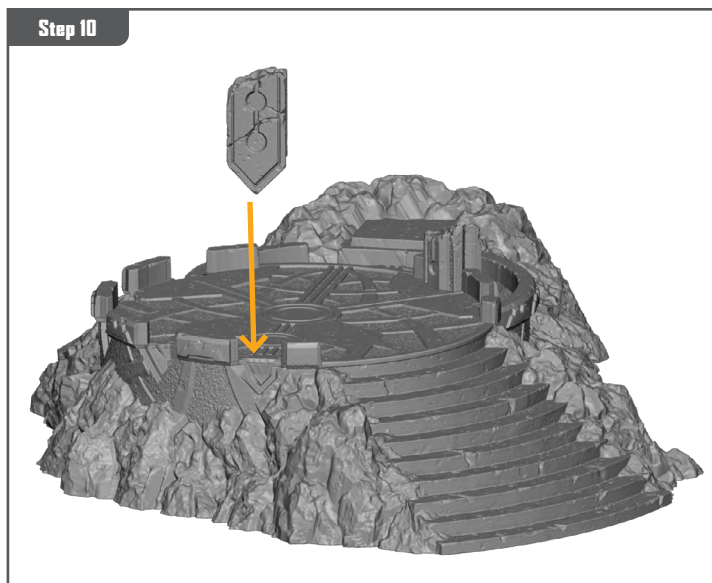
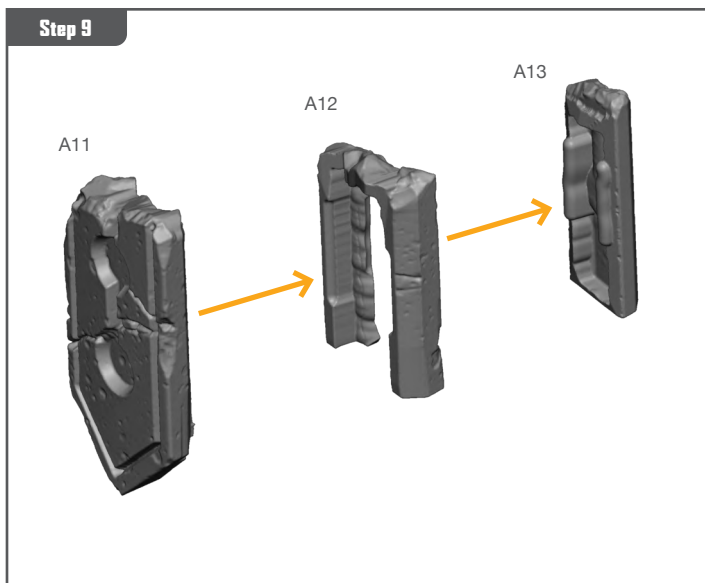


Permission granted to print or photocopy for personal use.



Atomic Mass Games and logo are TM of Atomic Mass Games.
Atomic Mass Games, 1995 County Road B2 W, Roseville, MN, 55113, USA, 1-651-639-1905.
Actual components may vary from those shown.

TOWER (A) ASSEMBLY GUIDE (CONTINUED)



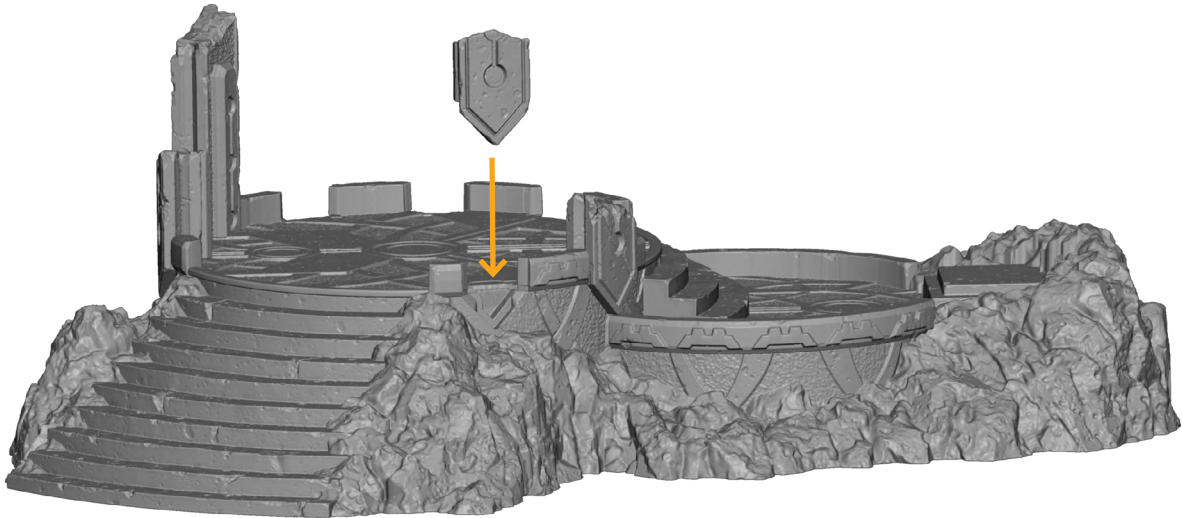
Permission granted to print or photocopy for personal use.



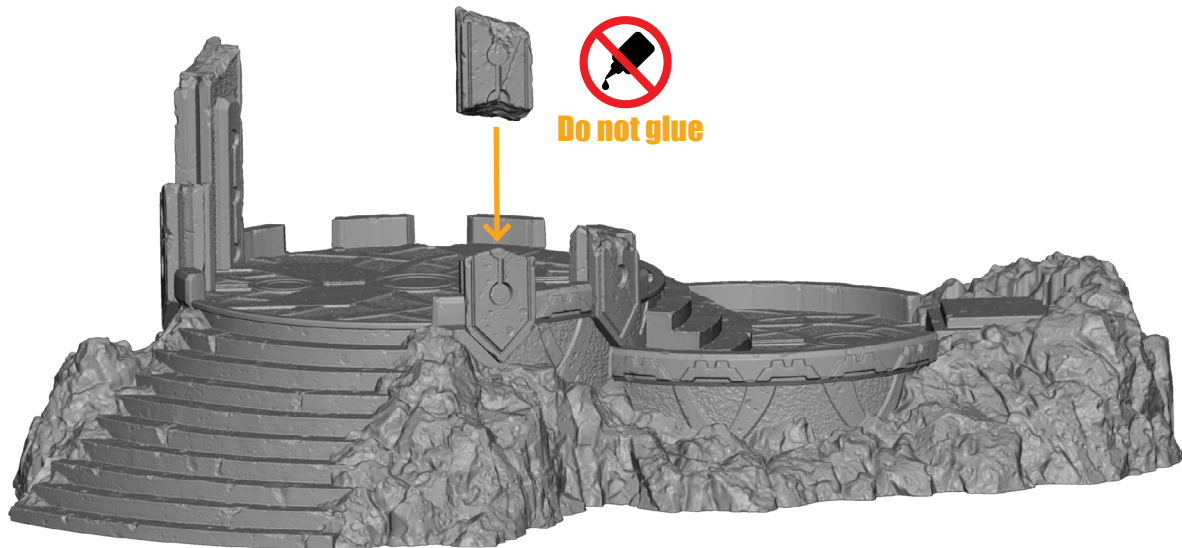
Atomic Mass Games and logo are TM of Atomic Mass Games.
Atomic Mass Games, 1995 County Road B2 W, Roseville, MN, 55113, USA, 1-651-639-1905.
Actual components may vary from those shown.

TOWER (A) ASSEMBLY GUIDE (CONTINUED)

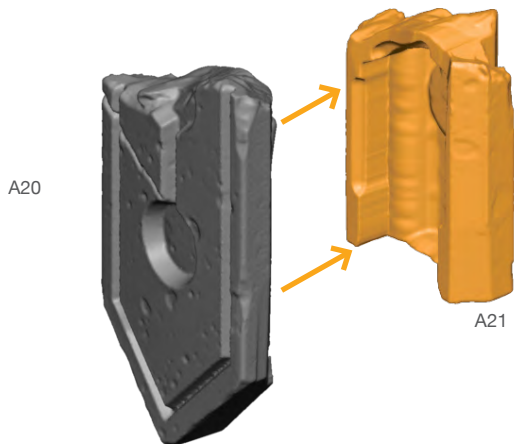
Step 15



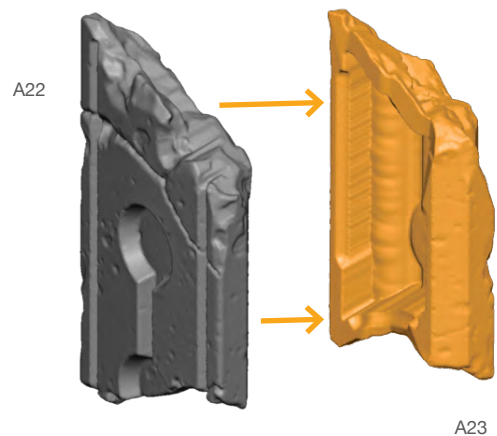
Step 16



Step 17



Step 18



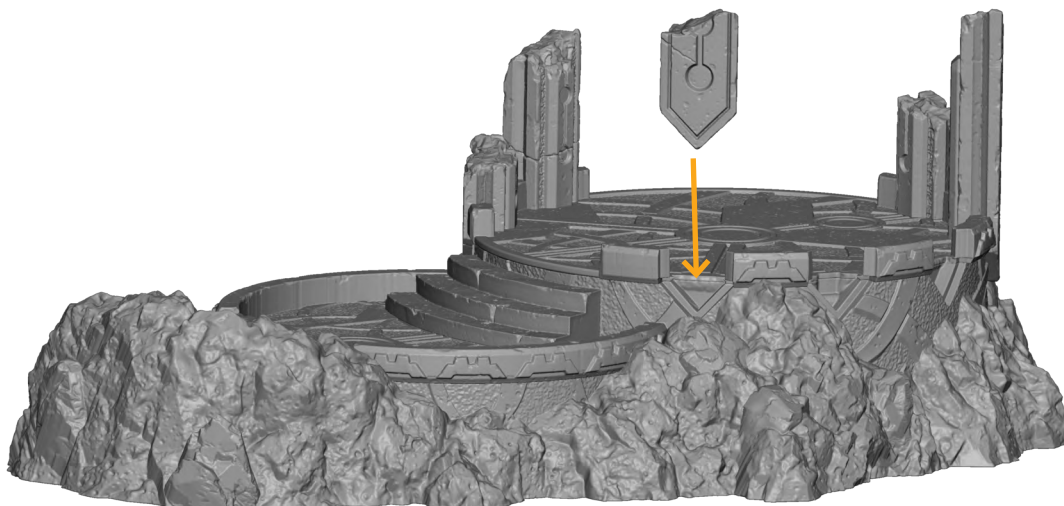
Permission granted to print or photocopy for personal use.



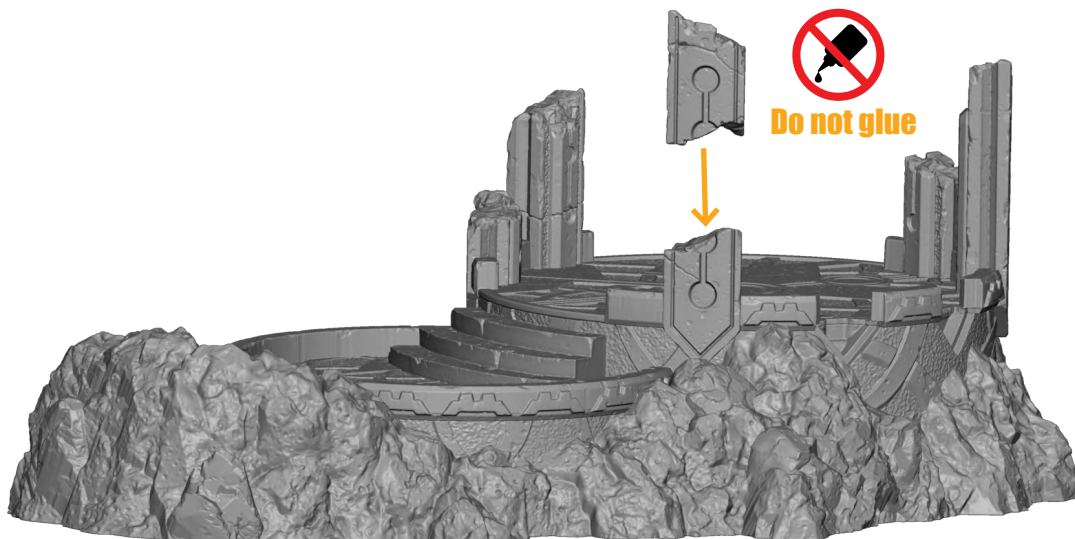
Atomic Mass Games and logo are TM of Atomic Mass Games.
Atomic Mass Games, 1995 County Road B2 W, Roseville, MN, 55113, USA, 1-651-639-1905.
Actual components may vary from those shown.

TOWER (A) ASSEMBLY GUIDE (CONTINUED)

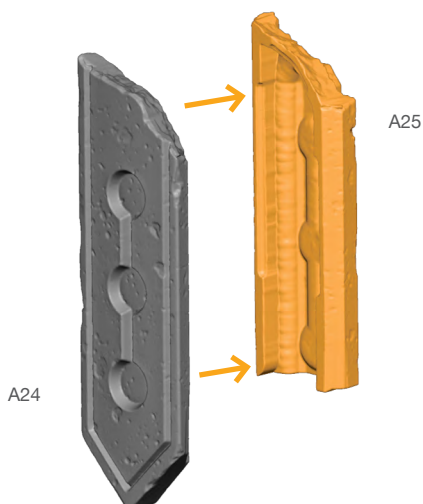
Step 19



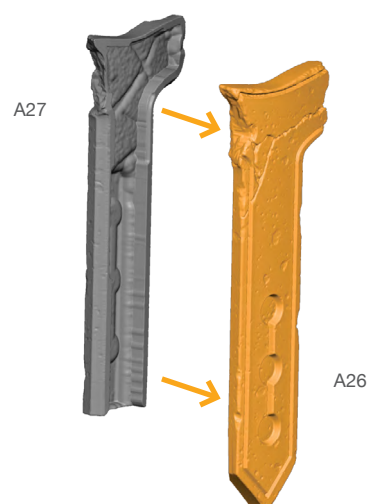
Step 20



Step 21



Step 22



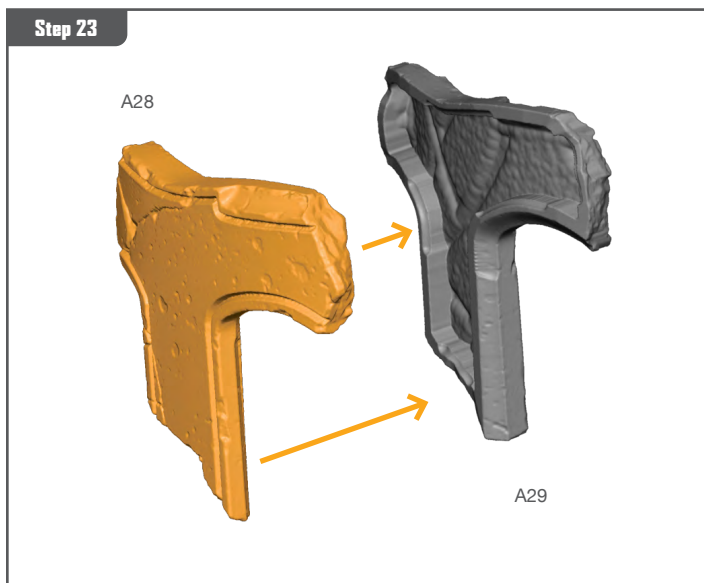
Permission granted to print or photocopy for personal use.



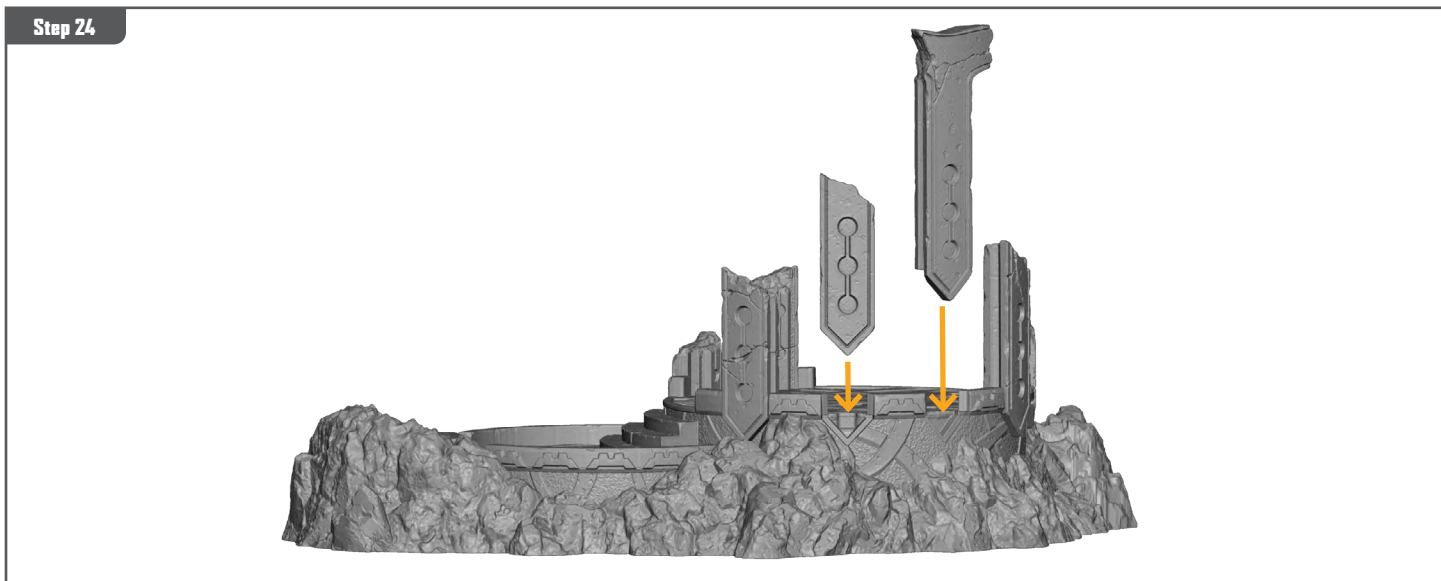
Atomic Mass Games and logo are TM of Atomic Mass Games.
Atomic Mass Games, 1995 County Road B2 W, Roseville, MN, 55113, USA, 1-651-639-1905.
Actual components may vary from those shown.

TOWER (A) ASSEMBLY GUIDE (CONTINUED)

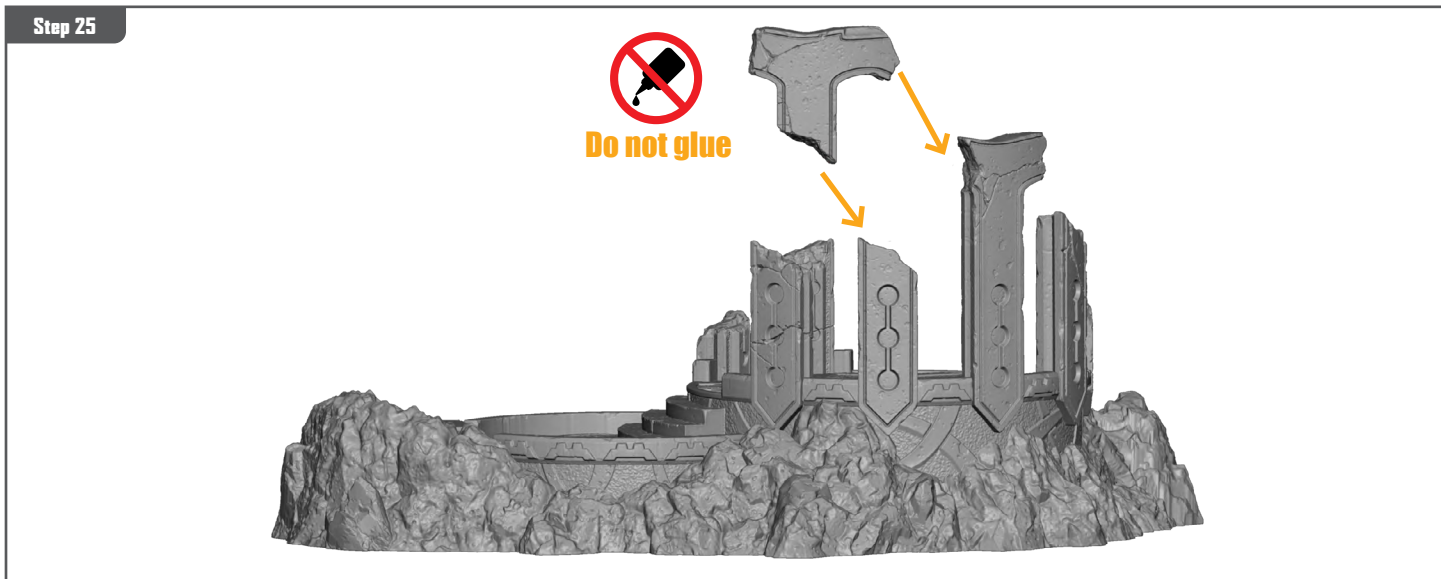
Step 23



Step 24



Step 25



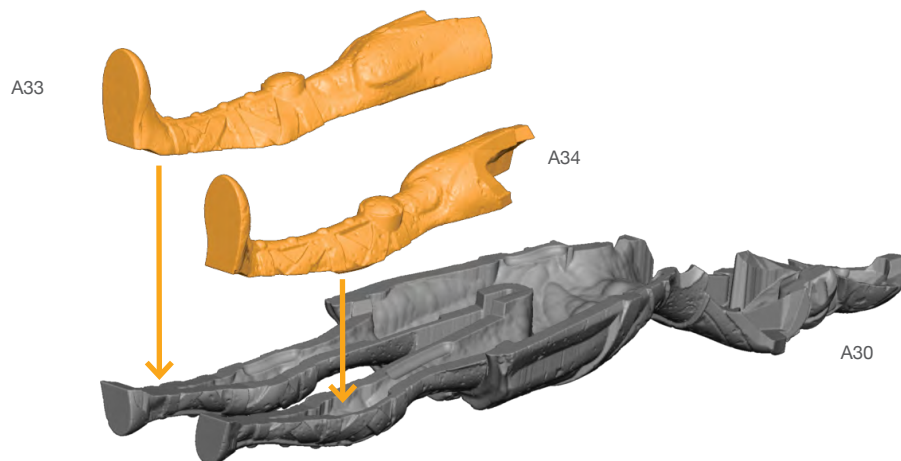
Permission granted to print or photocopy for personal use.



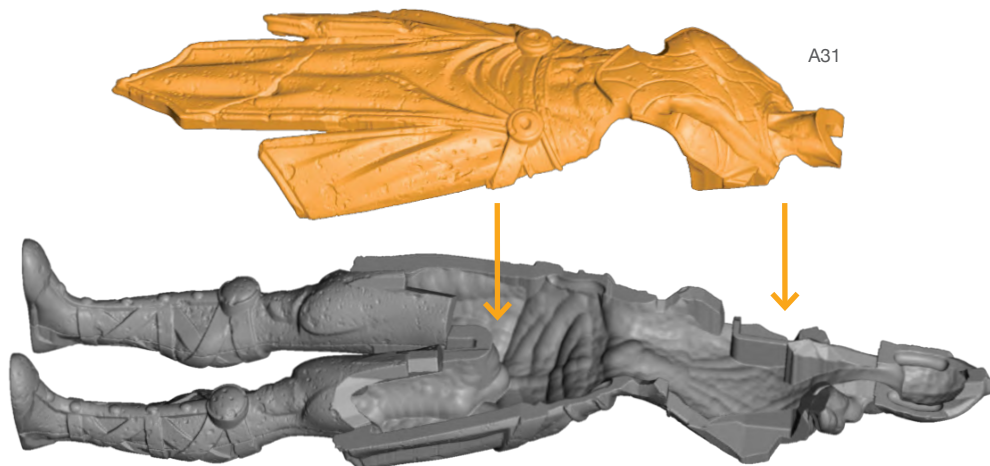
Atomic Mass Games and logo are TM of Atomic Mass Games.
Atomic Mass Games, 1995 County Road B2 W, Roseville, MN, 55113, USA, 1-651-639-1905.
Actual components may vary from those shown.

TOWER (A) ASSEMBLY GUIDE (CONTINUED)

Step 26



Step 27



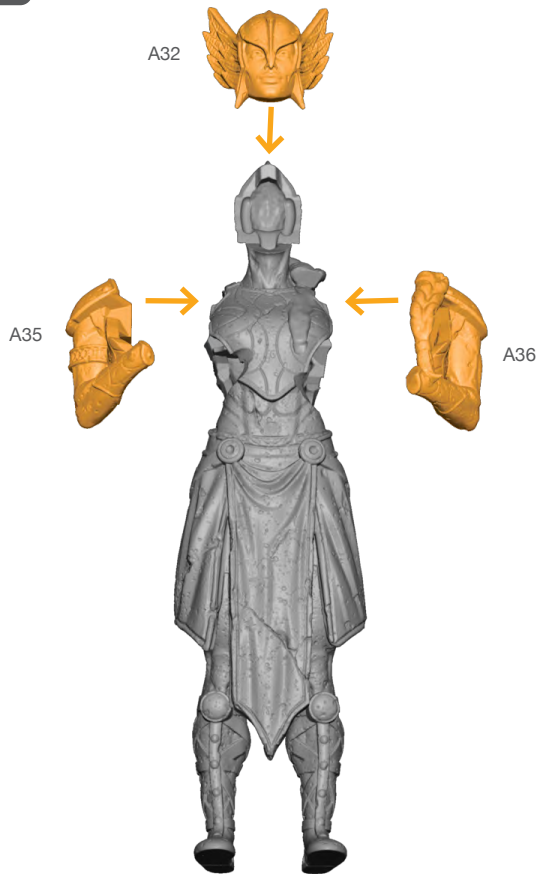
Permission granted to print or photocopy for personal use.



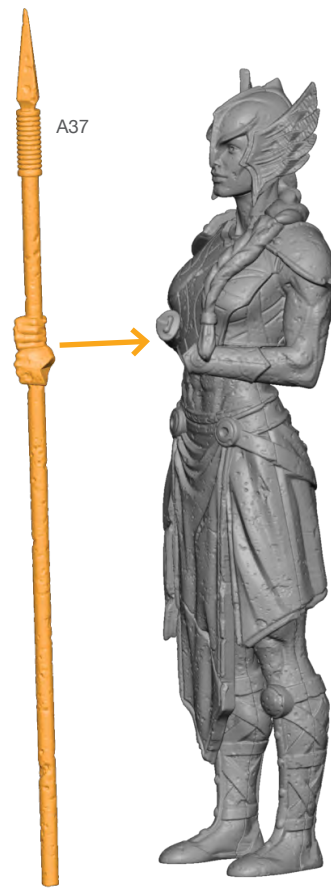
Atomic Mass Games and logo are TM of Atomic Mass Games.
Atomic Mass Games, 1995 County Road B2 W, Roseville, MN, 55113, USA, 1-651-639-1905.
Actual components may vary from those shown.

TOWER (A) ASSEMBLY GUIDE (CONTINUED)

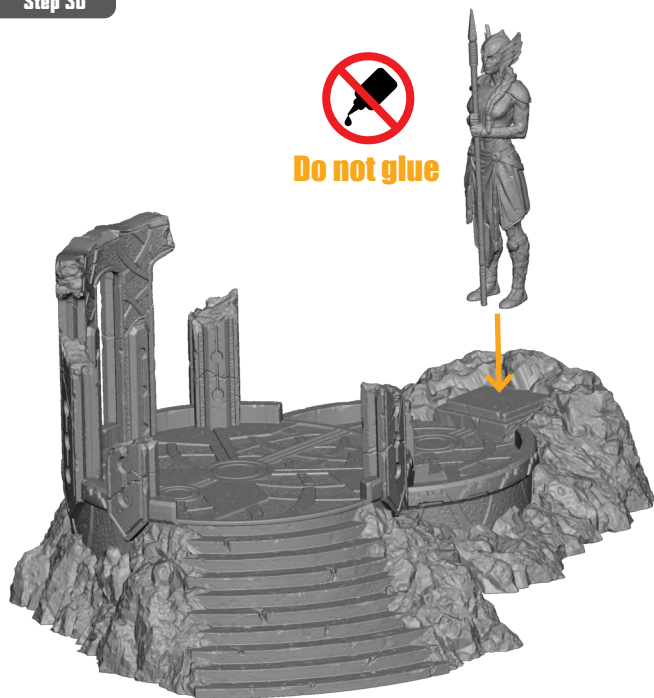
Step 28



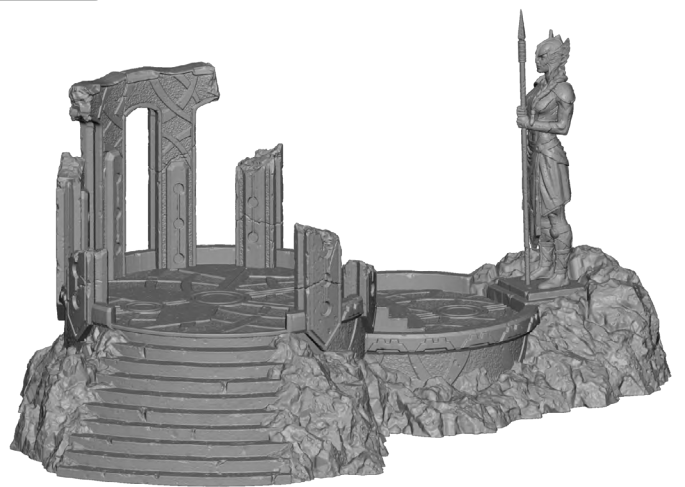
Step 29



Step 30



Final



Permission granted to print or photocopy for personal use.



Atomic Mass Games and logo are TM of Atomic Mass Games.
Atomic Mass Games, 1995 County Road B2 W, Roseville, MN, 55113, USA, 1-651-639-1905.
Actual components may vary from those shown.