

STAR WARS™

LEGION™

READ THIS FIRST

Be sure to use a pair of sharp hobby clippers to remove the miniature components from the frame. Carefully clean the excess material and mold lines with a sharp hobby knife. Check the fit of each part before gluing. Use a small amount of hobby plastic glue to assemble the components. Use caution with all products and follow all manufacturer instructions. Adult supervision is recommended for children under the age of 16. Have fun!

JOIN THE COMMUNITY

Use #MyStarWarsLegion to share your miniature photos and be a part of the *Star Wars: Legion* community!



AtomicMassGames

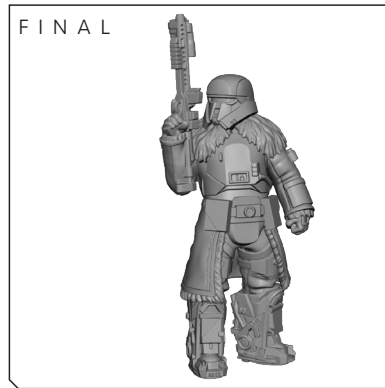
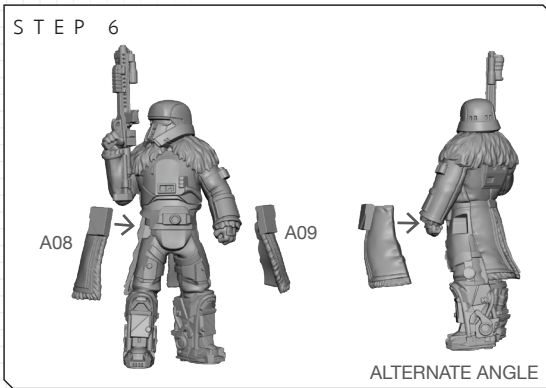
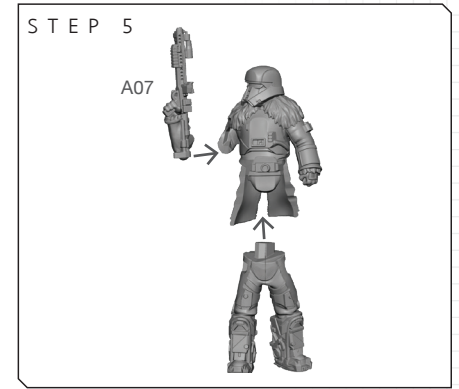
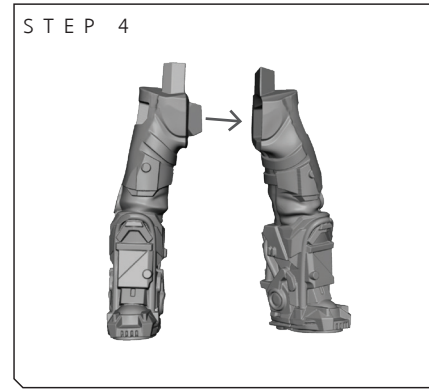
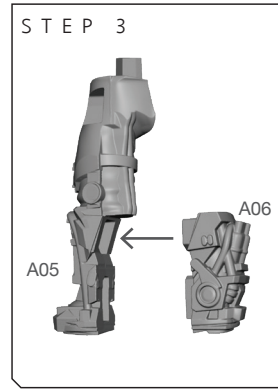
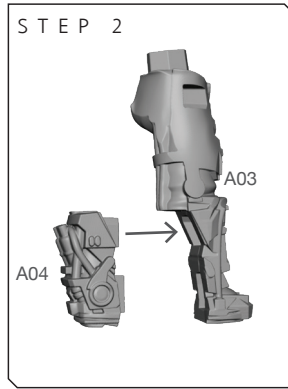
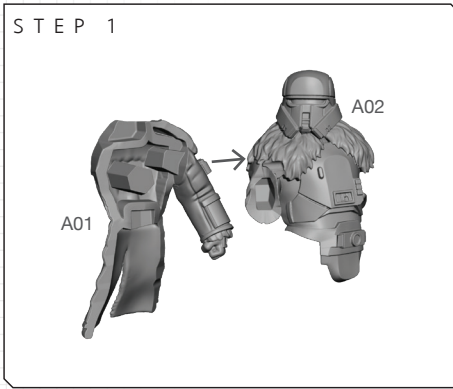


AtomicMassGames

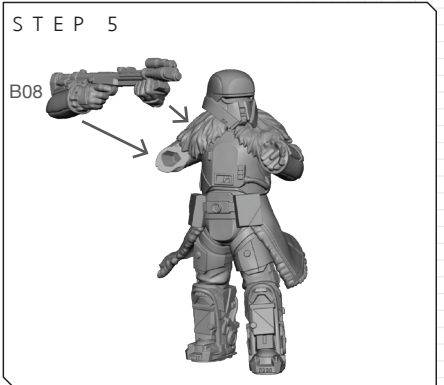
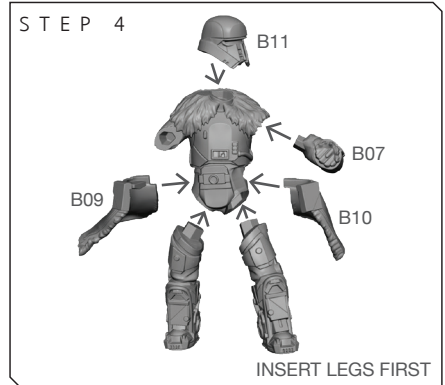
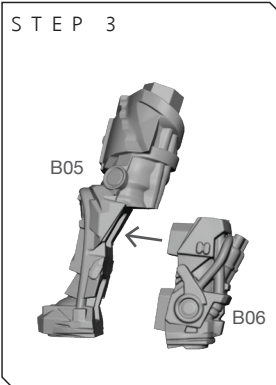
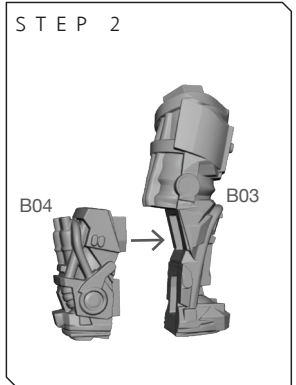
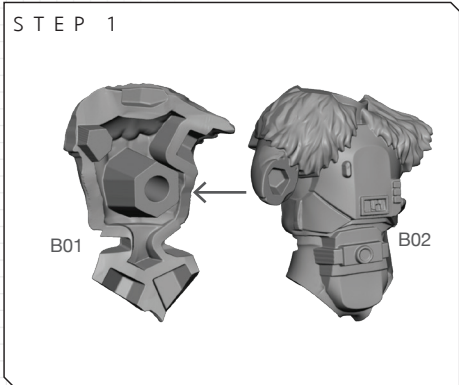


Atomic_Mass_Transmissions

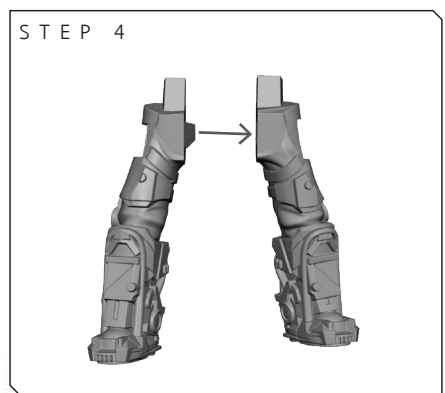
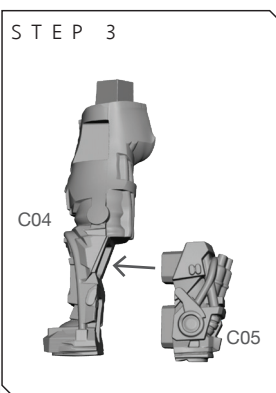
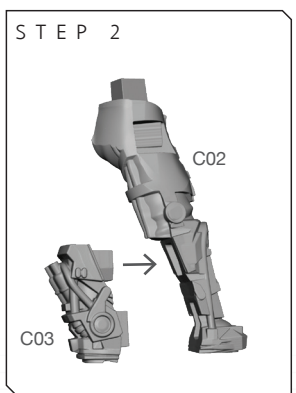
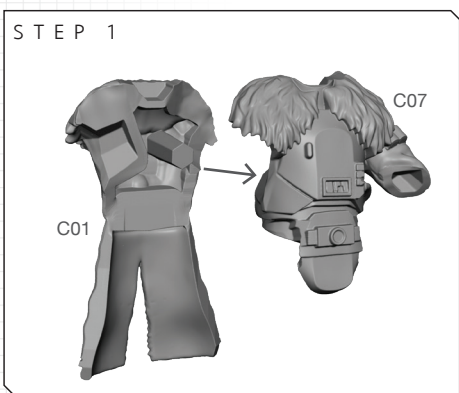
SWL117 LEADER (A) ASSEMBLY



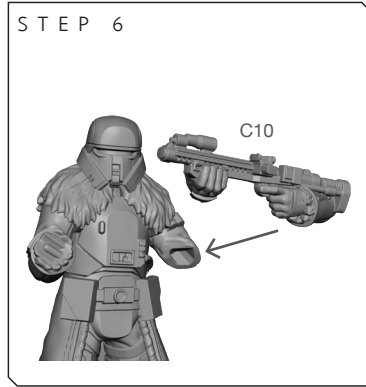
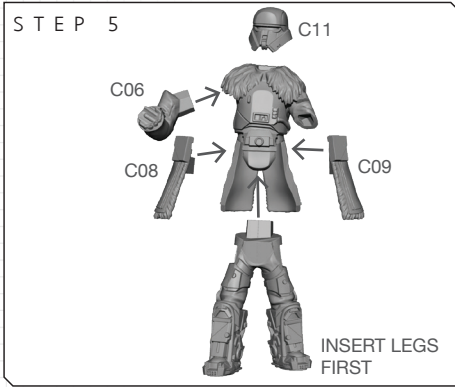
SWL117 RANGE TROOPER(B) ASSEMBLY



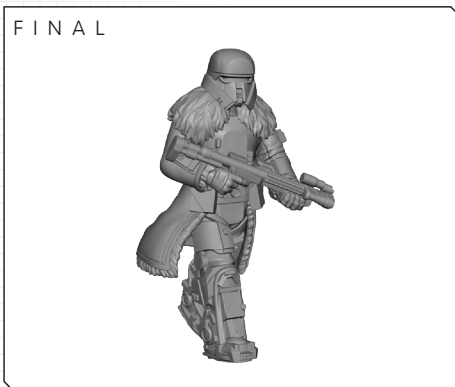
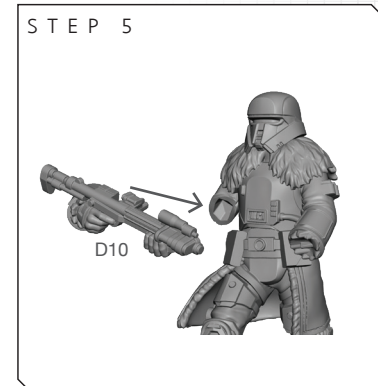
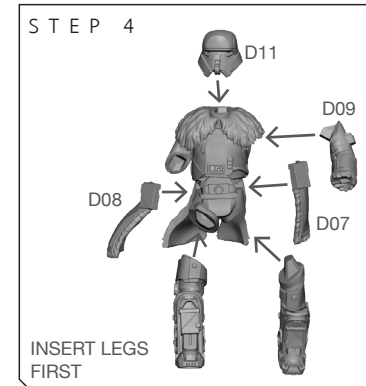
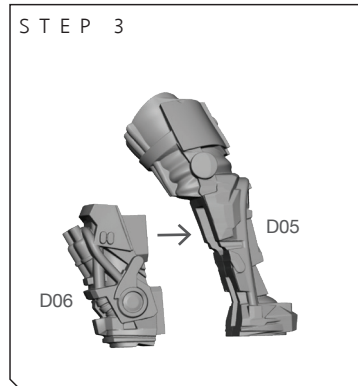
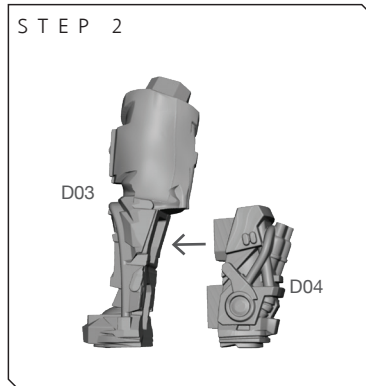
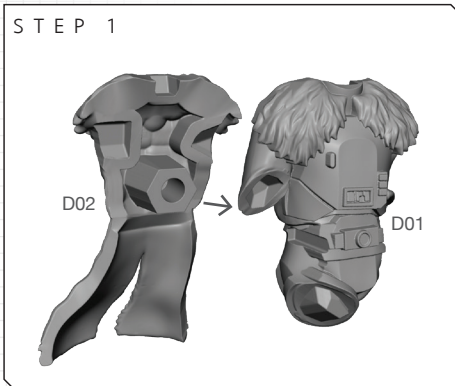
SWL117 RANGE TROOPER(C) ASSEMBLY



SWL117 RANGE TROOPER (C) ASSEMBLY

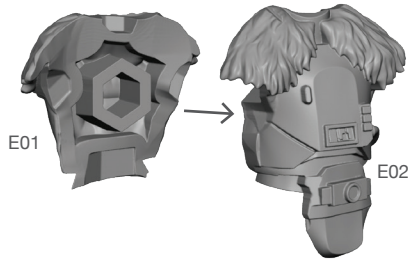


SWL117 RANGE TROOPER (D) ASSEMBLY

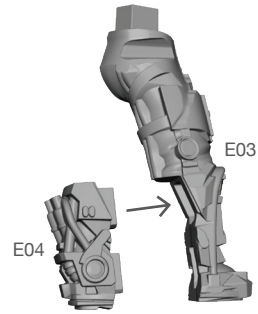


SWL117 HEAVY-TROOPER(E) ASSEMBLY

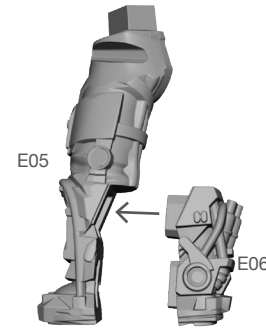
STEP 1



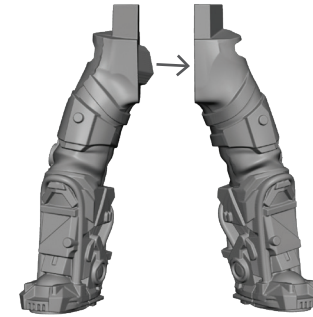
STEP 2



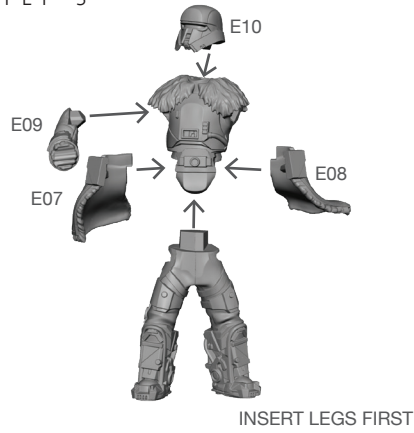
STEP 3



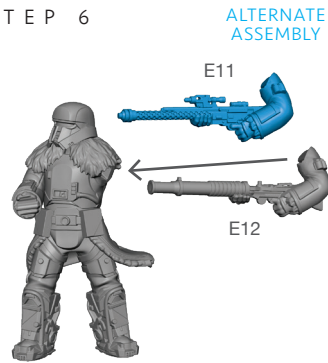
STEP 4



STEP 5



STEP 6



FINAL

