

STAR WARS™ LEGION™

REPUBLIC
SPECIALISTS
(SWQ200)

READ THIS FIRST

STOP! Before assembling, please visit atomicmassgames.com/SWLegion and download the assembly instructions. Be sure to use a pair of sharp hobby clippers to remove the miniature components from the frame. Carefully clean the excess material and mold lines with a sharp hobby knife. Check the fit of each part before gluing. Use a small amount of hobby plastic glue to assemble the components.

Use caution with all products and follow all manufacturer instructions. Adult supervision is recommended for children under the age of 16. Have fun!

JOIN THE COMMUNITY

Use #MyStarWarsLegion to share your miniature photos and be a part of the *Star Wars*™: Legion community!



AtomicMassGames



AtomicMassGames



Atomic_Mass_Transmissions

A

Example:

(A01, A02, A06, A08, A09, A10, A11)

Example:

(A01, A02, A03, A04, A05, A10, A13)

Detailed description of diagram A: This diagram shows the assembly of Republic Specialists. It features a grid of parts: A13 (head), A12 (blue helmet), A11 (orange helmet), A10 (small piece), A07 (purple helmet) OR A08 (grey helmet), A06 (arm), A03 (blaster), A02 (torso), A04 (arm), A05 (hand), A09 (blaster), and A01 (full body). Arrows indicate the assembly path from individual parts to two final examples of the character in different armor configurations.

B

Example:

(B01, B02, B03, B04, B05, B06, B07, B10, B11)

Detailed description of diagram B: This diagram shows the assembly of a Republic Specialist. It features a grid of parts: B08 (orange helmet), B09 (blue helmet), B10 (head), B07 (blaster), B11 (torso), B01 (armor piece), B06 (arm), B05 (blaster), B03 (arm), B04 (arm), and B02 (torso). Arrows indicate the assembly path from individual parts to a final example of the character.

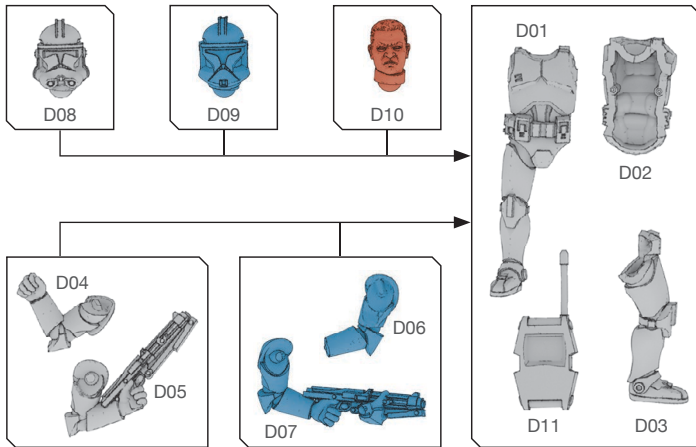
C

Example:

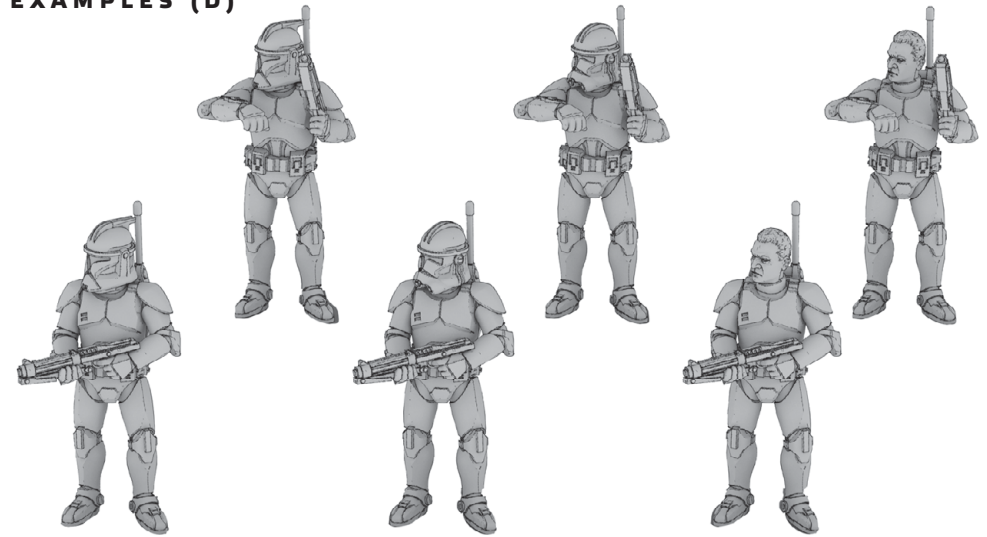
(C01, C02, C03, C04, C05, C06, C07, C08, C11)

Detailed description of diagram C: This diagram shows the assembly of a Republic Specialist. It features a grid of parts: C07 (armor piece), C08 (orange helmet), C05 (blaster), C06 (arm), C11 (torso), C09 (blue helmet), C10 (head), C04 (arm), C02 (torso), C03 (arm), and C01 (armor piece). Arrows indicate the assembly path from individual parts to a final example of the character.

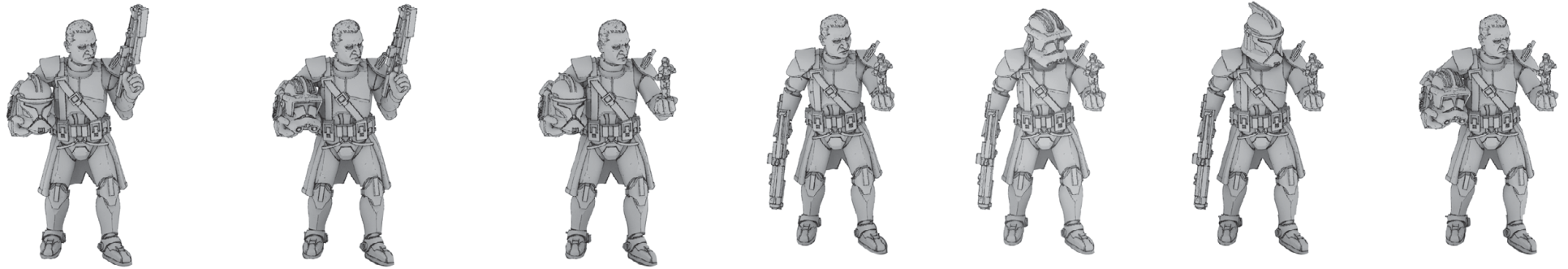
D



EXAMPLES (D)



EXAMPLES (A)



EXAMPLES (B)



EXAMPLES (C)

