



## READ THIS FIRST

Be sure to use a pair of sharp hobby clippers to remove the miniature components from the frame. Carefully clean the excess material and mold lines with a sharp hobby knife. Check the fit of each part before gluing. Use a small amount of hobby plastic glue to assemble the components. Use caution with all products and follow all manufacturer instructions. Adult supervision is recommended for children under the age of 16. Have fun!

## JOIN THE COMMUNITY

Use #MyStarWarsLegion to share your miniature photos and be a part of the *Star Wars™: Legion* community!



AtomicMassGames



AtomicMassGames

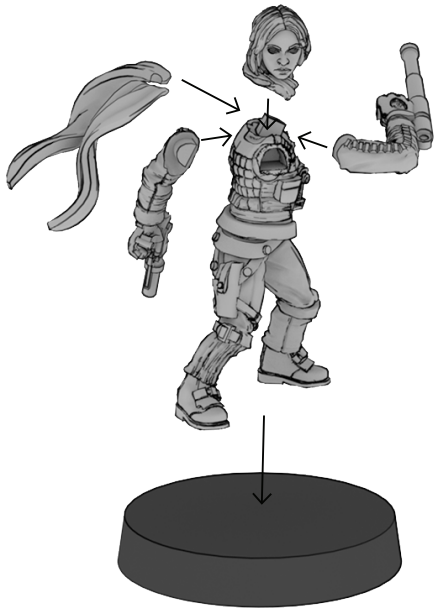


Atomic\_Mass\_Transmissions

### JYN ERSO

SWQ39 ASSEMBLY (A)

STEP 1



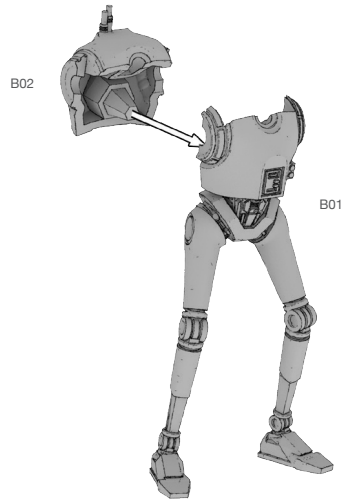
FINAL



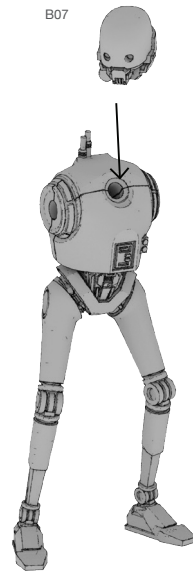
# K-2S0

## SWQ39 ASSEMBLY (B)

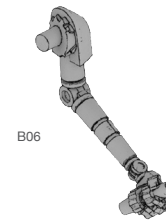
STEP 1



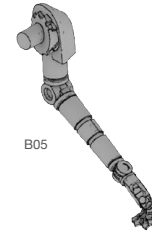
STEP 2



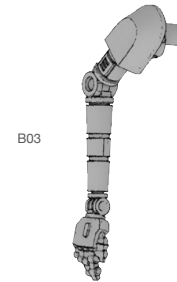
ALTERNATE OPTION



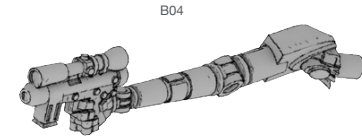
ALTERNATE OPTION



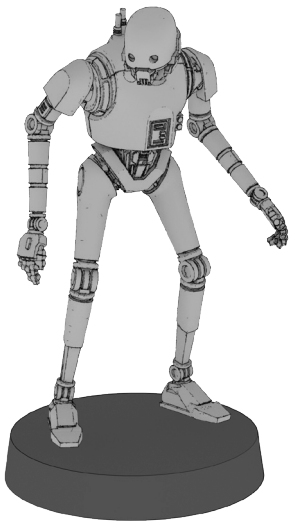
ALTERNATE OPTION



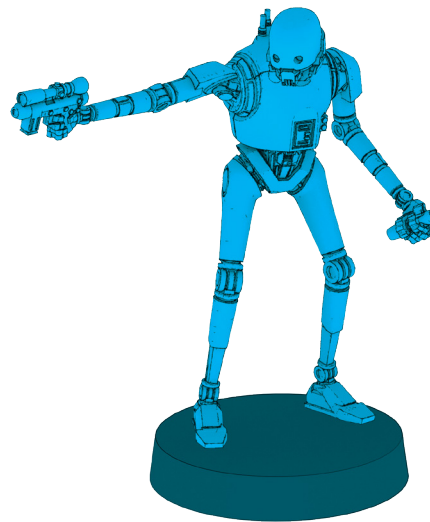
ALTERNATE OPTION



FINAL



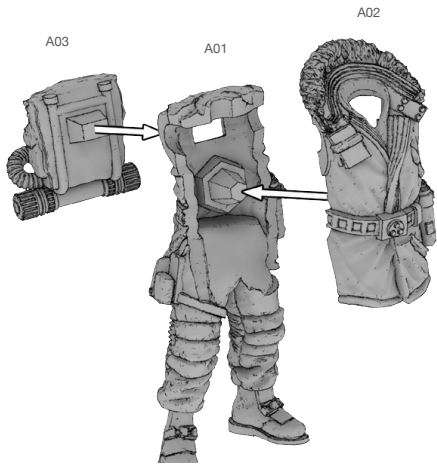
ALTERNATE OPTION



# CASSIAN ANDOR

## SWQ39 ASSEMBLY (A)

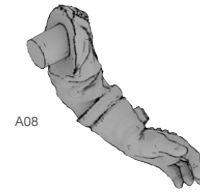
STEP 1



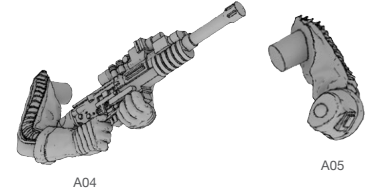
STEP 2



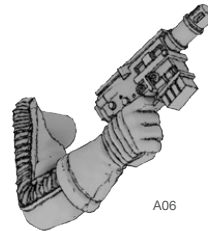
ALTERNATE OPTION



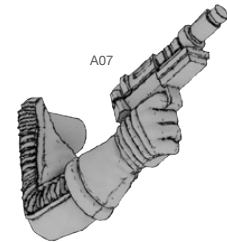
ALTERNATE OPTION



ALTERNATE OPTION



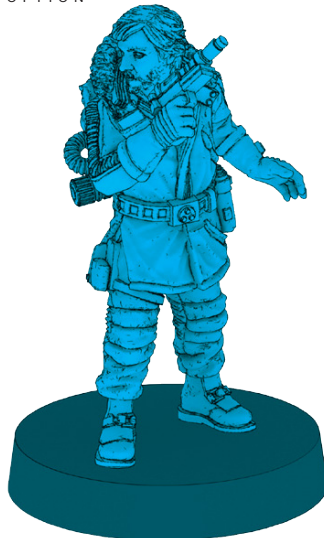
ALTERNATE OPTION



FINAL



ALTERNATE OPTION



ALTERNATE OPTION

