



READ THIS FIRST

Be sure to use a pair of sharp hobby clippers to remove the miniature components from the frame. Carefully clean the excess material and mold lines with a sharp hobby knife. Check the fit of each part before gluing. Use a small amount of hobby plastic glue to assemble the components. Use caution with all products and follow all manufacturer instructions. Adult supervision is recommended for children under the age of 16. Have fun!

JOIN THE COMMUNITY

Use #MyStarWarsLegion to share your miniature photos and be a part of the *Star Wars™: Legion* community!



AtomicMassGames



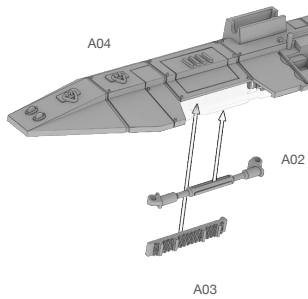
AtomicMassGames



Atomic_Mass_Transmissions

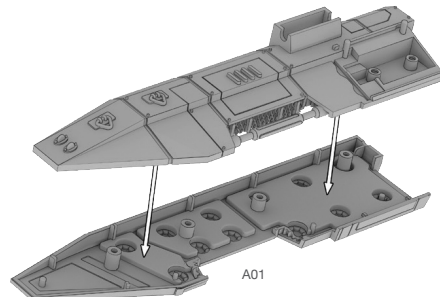
TX-130 SABER TANK SWQ27 ASSEMBLY (A)

STEP 1



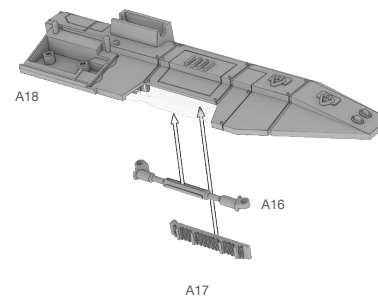
LEFT

STEP 2



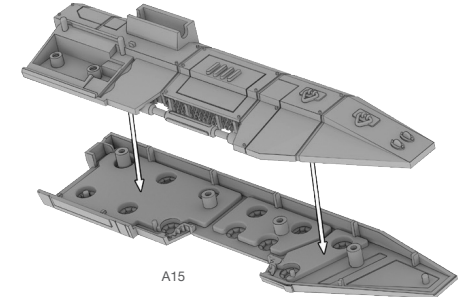
LEFT

STEP 3



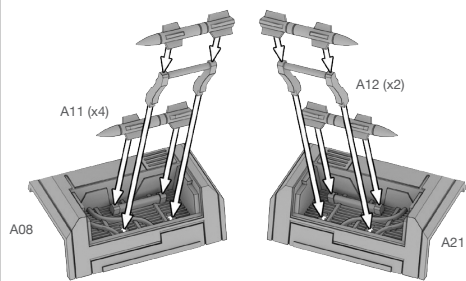
RIGHT

STEP 4



RIGHT

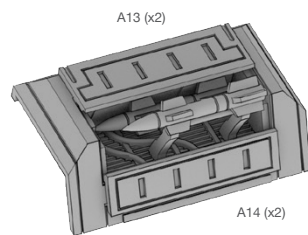
STEP 5



LEFT

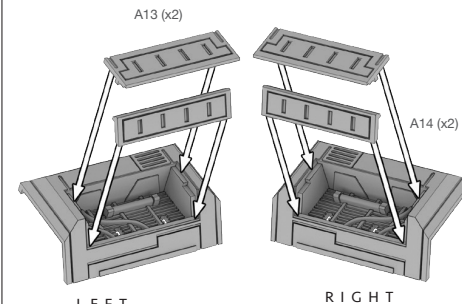
RIGHT

STEP 6



A14 (x2)

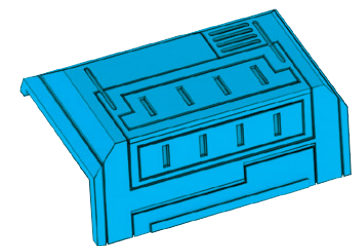
ALTERNATE OPTION



LEFT

RIGHT

ALTERNATE OPTION

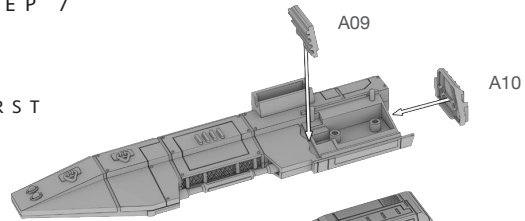


TX-130 SABER TANK (CONT)

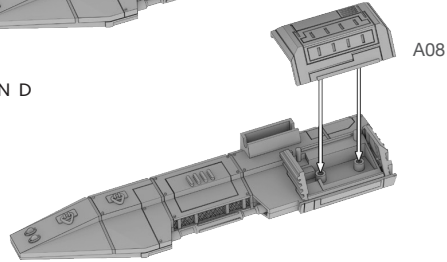
SW Q 27 ASSEMBLY (A)

STEP 7

FIRST



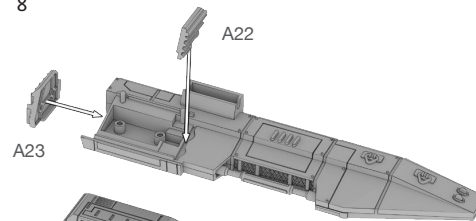
SECOND



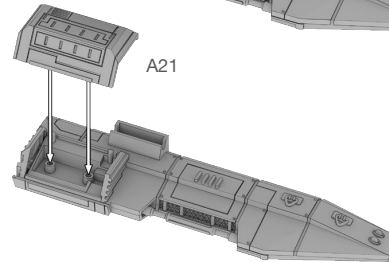
LEFT

STEP 8

FIRST



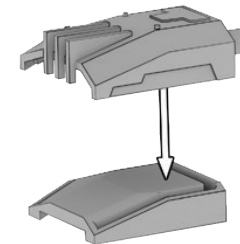
SECOND



RIGHT

STEP 9

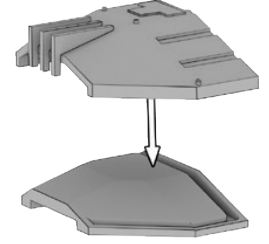
A07



A06

LEFT

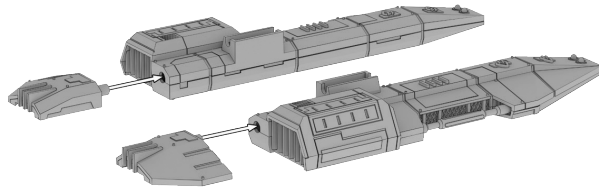
A20



A19

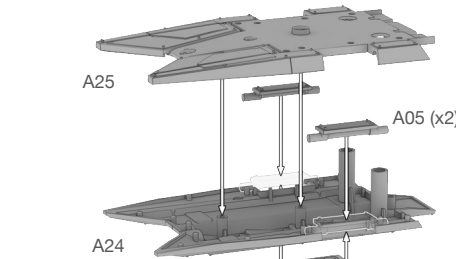
RIGHT

STEP 10

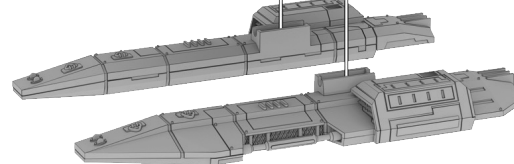


STEP 11

A25

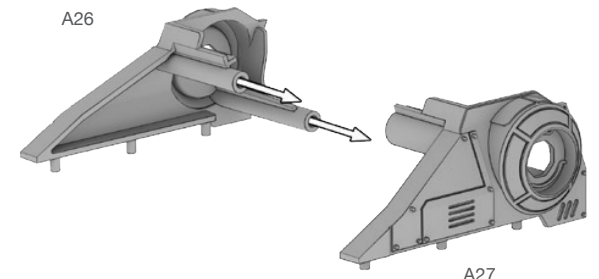


A24



STEP 12

A26

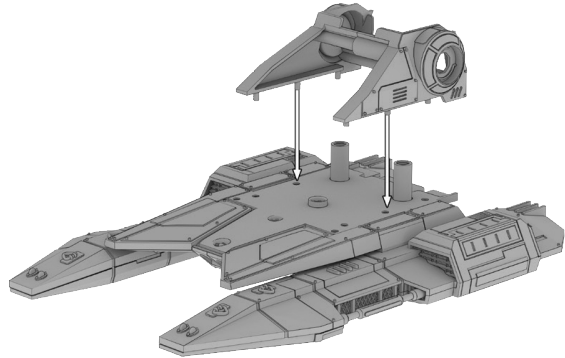


A27

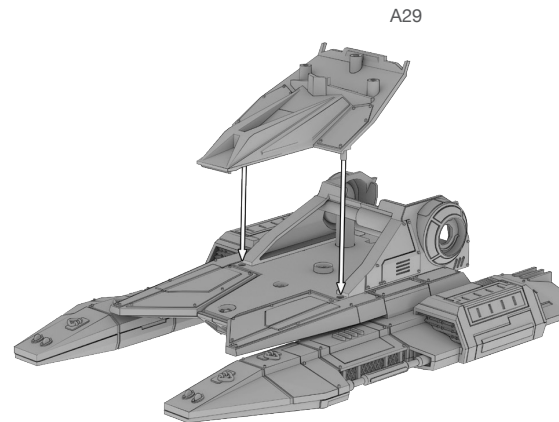
TX-130 SABER TANK (CONT)

SWQ27 ASSEMBLY (A)

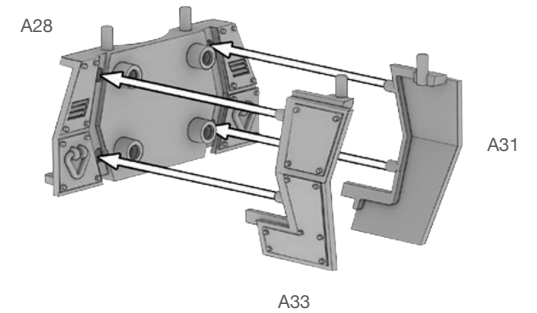
STEP 13



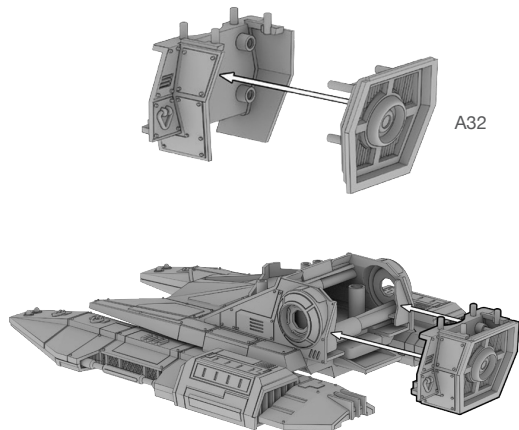
STEP 14



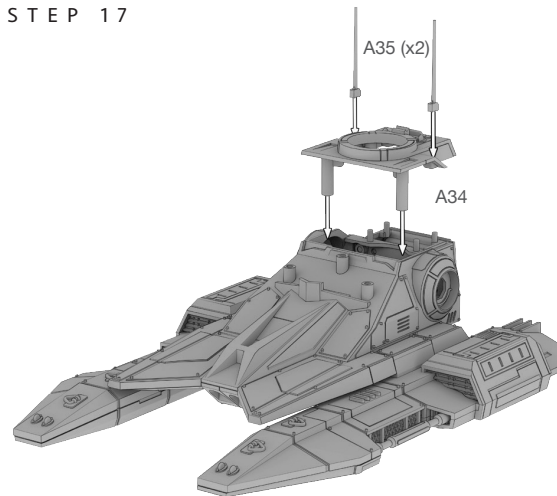
STEP 15



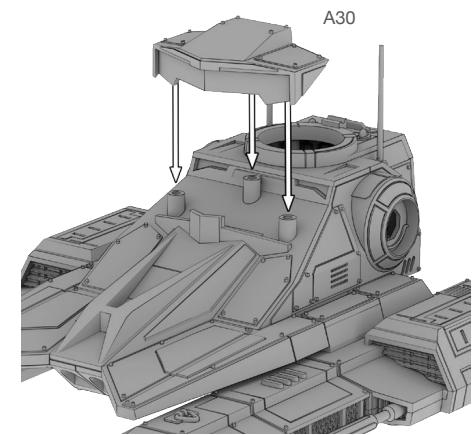
STEP 16



STEP 17

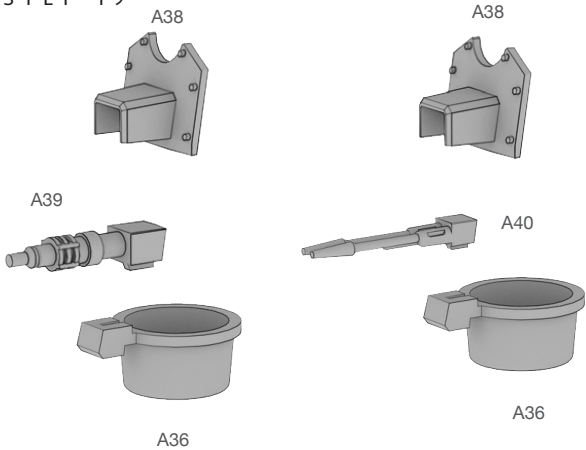


STEP 18

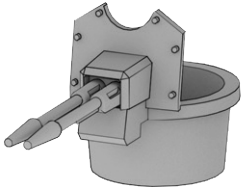


TX-130 SABER TANK (CONT)
SWQ 27 ASSEMBLY (A)

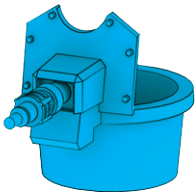
STEP 19



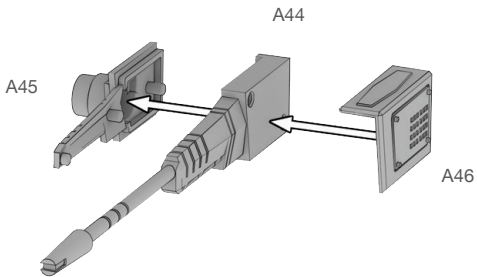
ALTERNATE OPTION



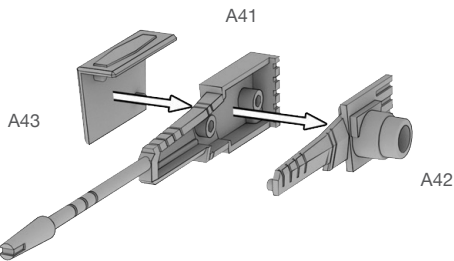
ALTERNATE OPTION



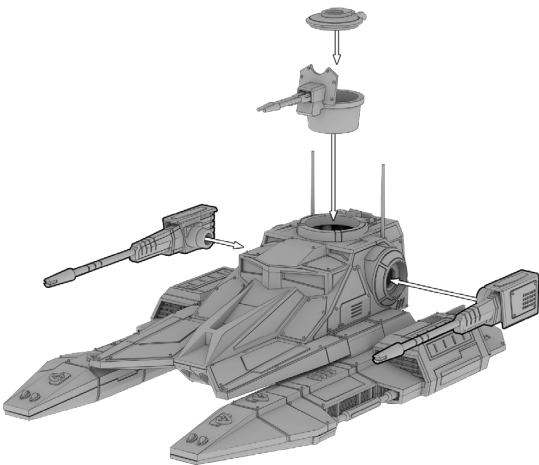
STEP 20



STEP 21



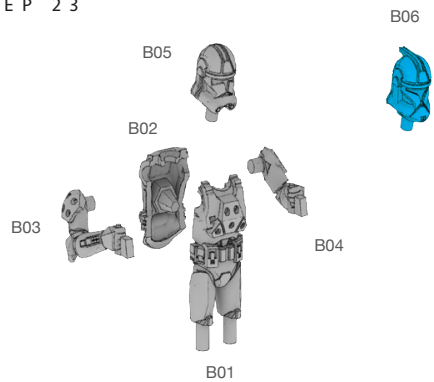
STEP 22



TX-130 SABER TANK (CONT)

SWQ 27 ASSEMBLY (B)

STEP 23



FINAL

