

# MARVEL CRISIS PROTOCOL MINIATURES GAME

CP272

## READ THIS FIRST

Be sure to use a pair of sharp hobby clippers to remove the miniature components from the Frame. Carefully clean the excess material and mold lines with a sharp hobby knife. Check the fit of each part before gluing. Use a small amount of hobby plastic glue to assemble the components. Use caution with all products and follow all manufacturer instructions. Adult supervision is recommended for children under the age of 16. Have fun!

## JOIN THE COMMUNITY

Use #PaintingProtocol to share your miniature photos and be a part of the Marvel: Crisis Protocol community!



AtomicMassGames



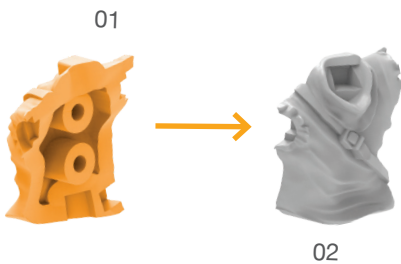
AtomicMassGames



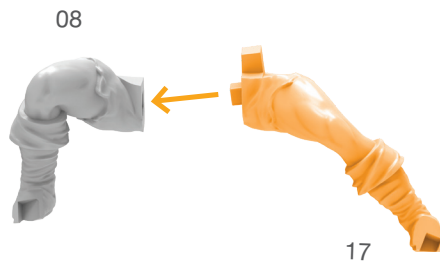
Atomic\_Mass\_Transmissions

## GREEN GOBLIN ASSEMBLY GUIDE

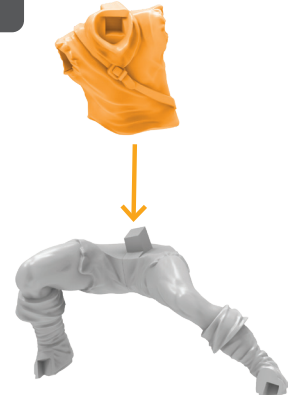
### Step 1



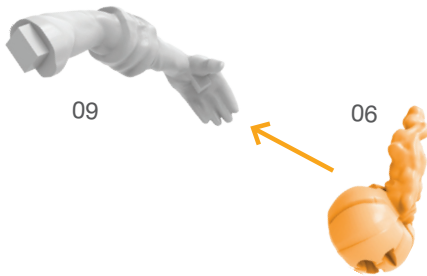
### Step 2



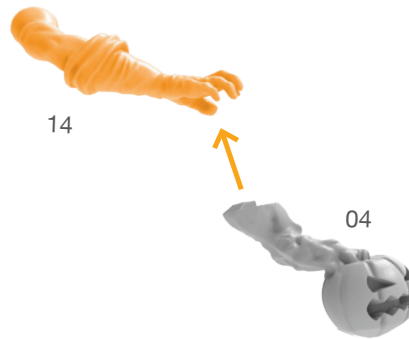
### Step 3



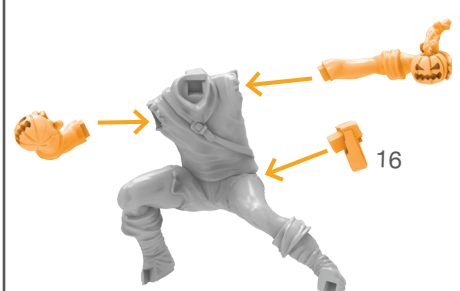
### Step 4



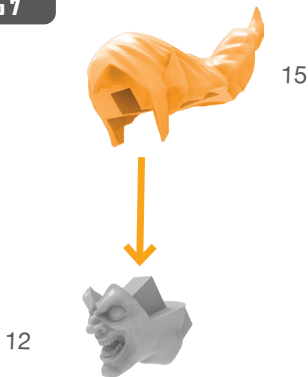
### Step 5



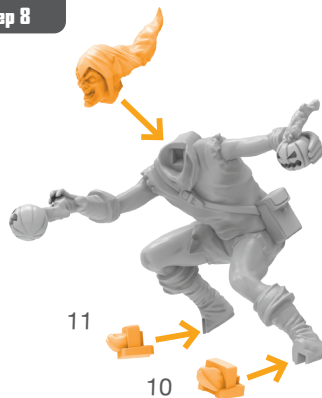
### Step 6



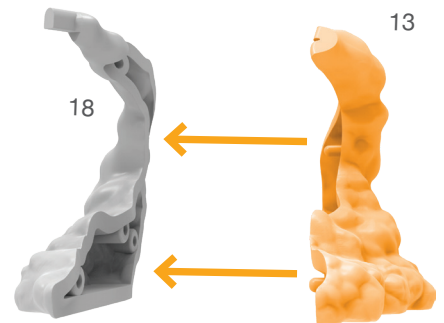
### Step 7



### Step 8



### Step 9

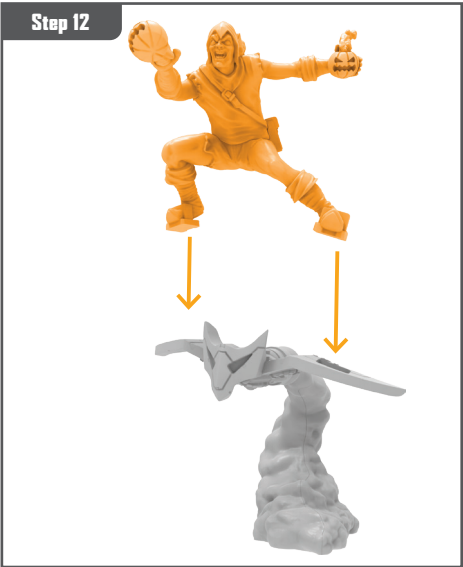
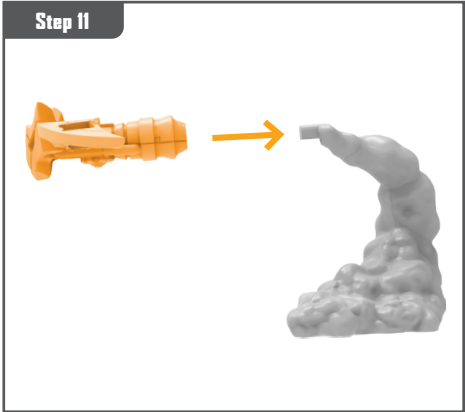
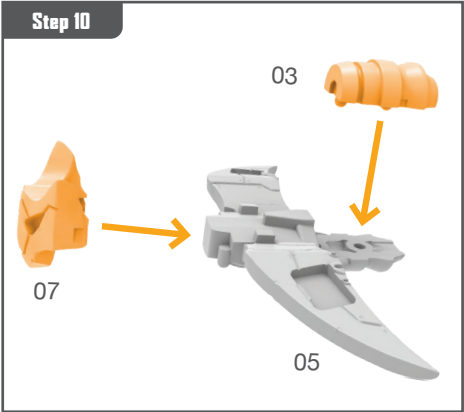


Permission granted to print or photocopy for personal use.



Atomic Mass Games and logo are TM of Atomic Mass Games.  
Atomic Mass Games, 1995 County Road B2 W, Roseville, MN, 55113, USA, 1-651-639-1905.  
Actual components may vary from those shown.

# GREEN GOBLIN ASSEMBLY GUIDE (CONTINUED)



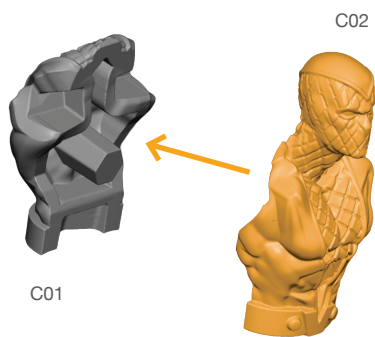
Permission granted to print or photocopy for personal use.



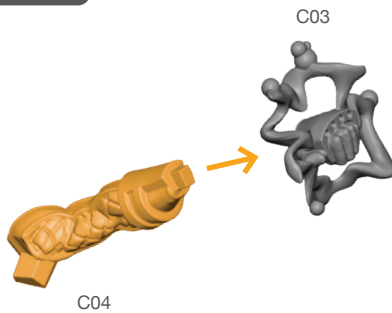
Atomic Mass Games and logo are TM of Atomic Mass Games.  
Atomic Mass Games, 1995 County Road B2 W, Roseville, MN, 55113, USA, 1-651-639-1905.  
Actual components may vary from those shown.

# SHOCKER ASSEMBLY GUIDE

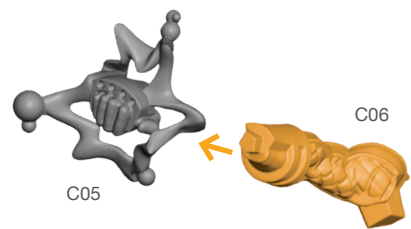
## Step 1



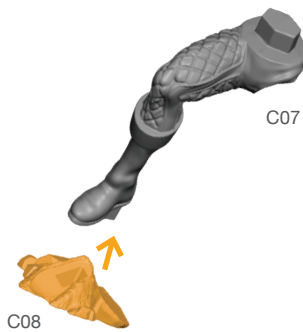
## Step 2



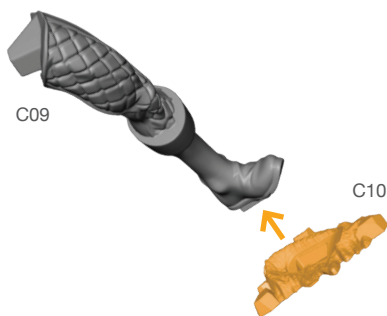
## Step 3



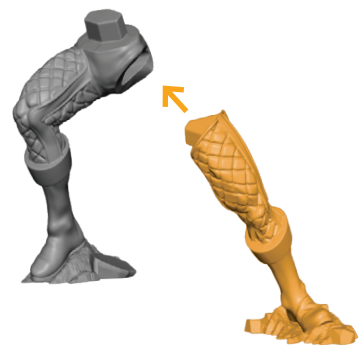
## Step 4



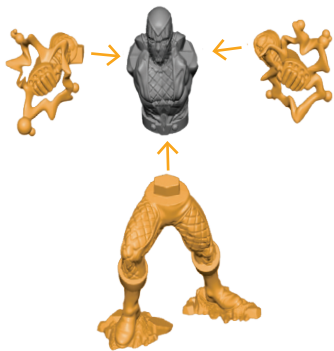
## Step 5



## Step 6



## Step 7



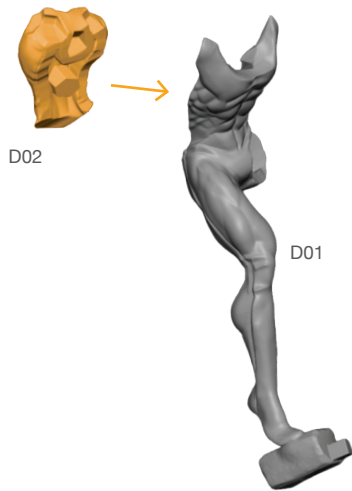
## Attach Base



Permission granted to print or photocopy for personal use.

# VULTURE ASSEMBLY GUIDE

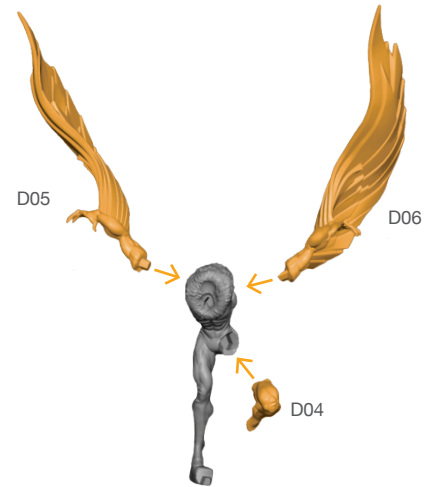
## Step 1



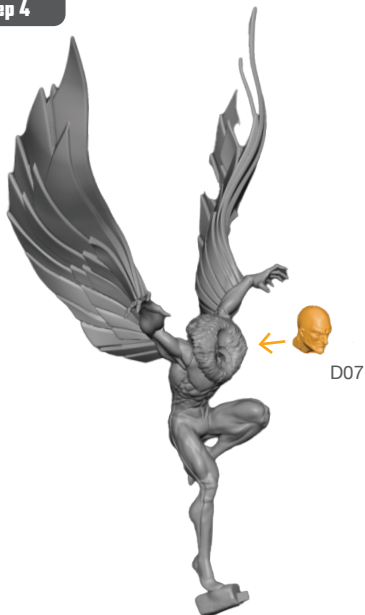
## Step 2



## Step 3



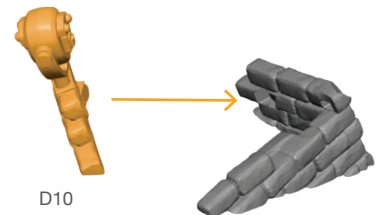
## Step 4



## Step 5



## Step 6



## Step 7



## Attach Base



Permission granted to print or photocopy for personal use.

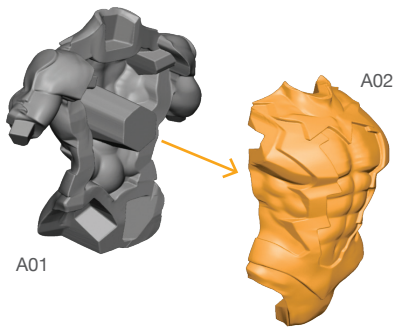


Atomic Mass Games and logo are TM of Atomic Mass Games.  
Atomic Mass Games, 1995 County Road B2 W, Roseville, MN, 55113, USA, 1-651-639-1905.  
Actual components may vary from those shown.

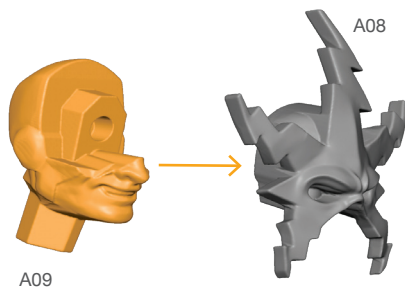


# ELECTRO ASSEMBLY GUIDE

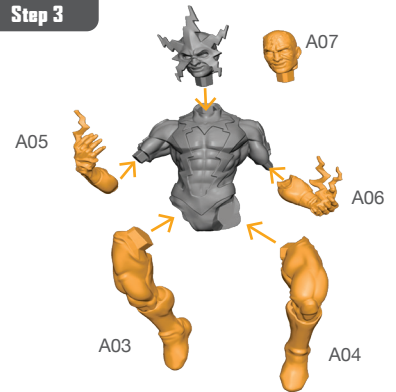
## Step 1



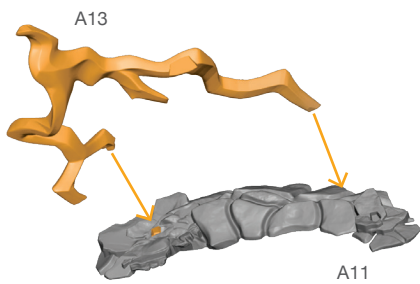
## Step 2



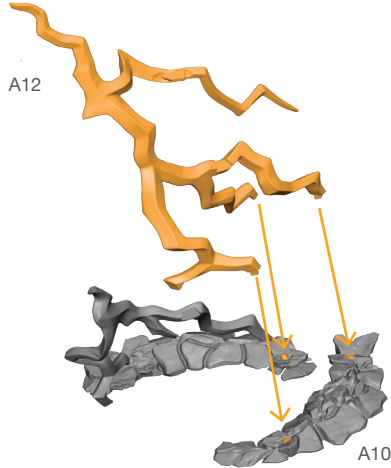
## Step 3



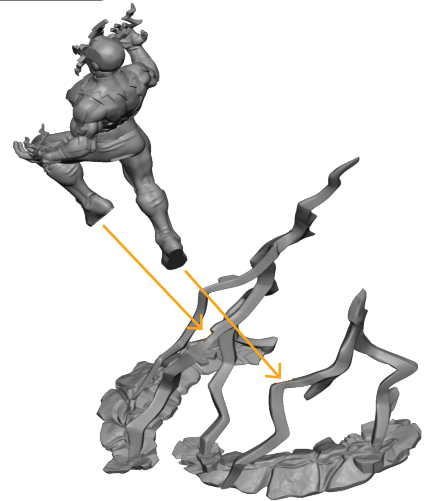
## Step 4



## Step 5



## Step 6



## Attach Base

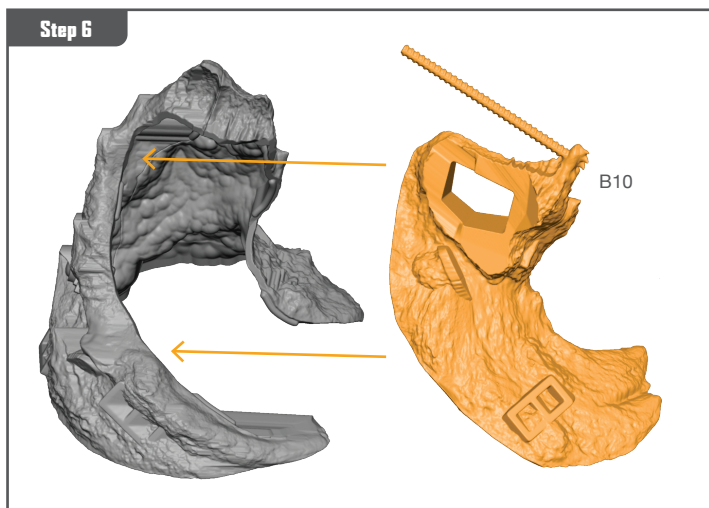
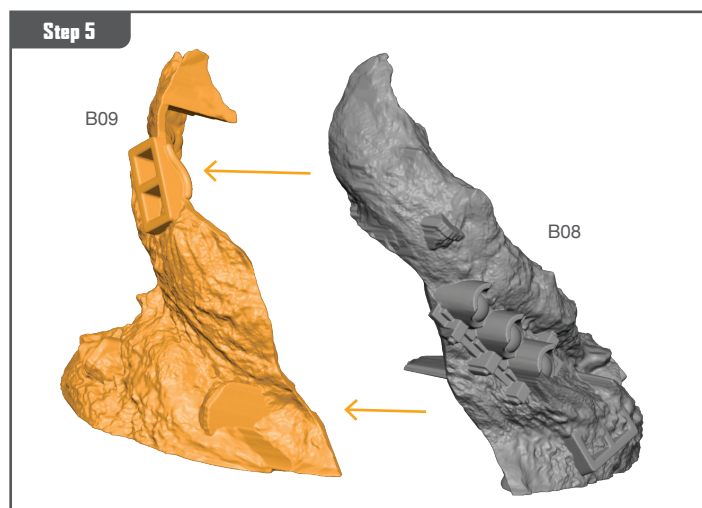
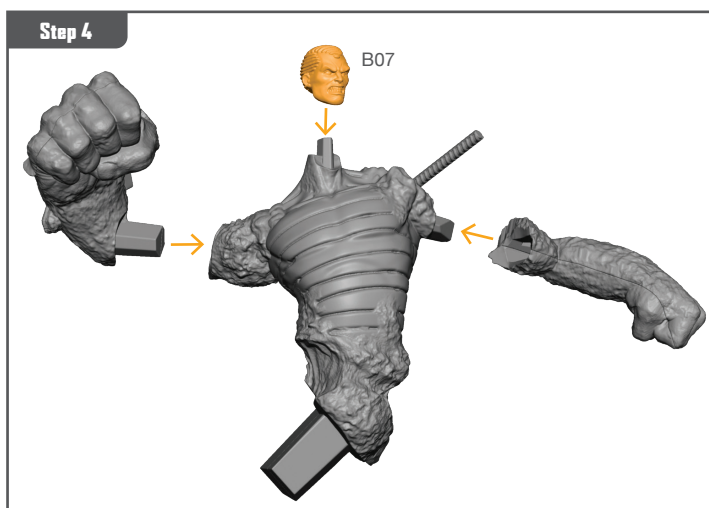
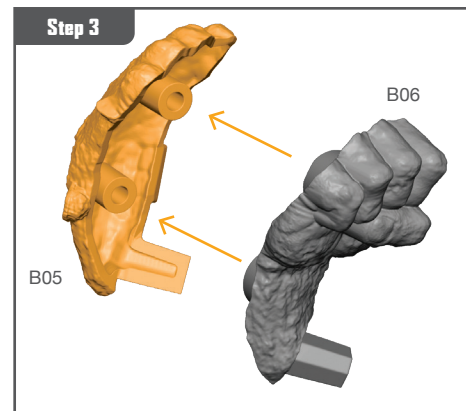
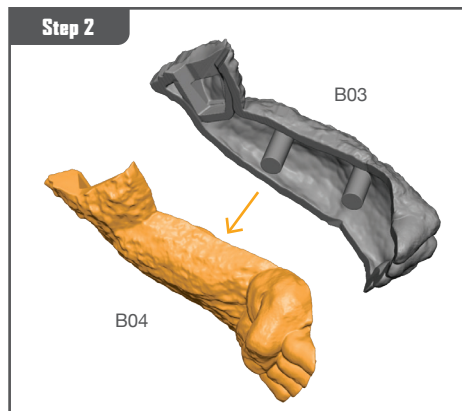
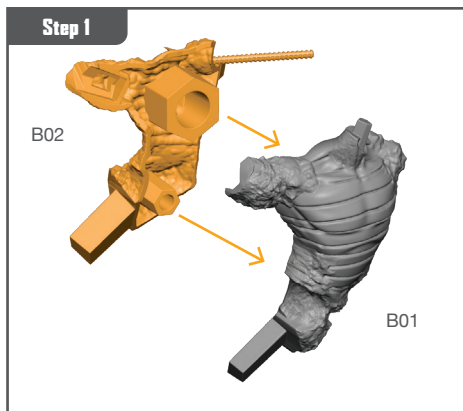


Permission granted to print or photocopy for personal use.



Atomic Mass Games and logo are TM of Atomic Mass Games.  
Atomic Mass Games, 1995 County Road B2 W, Roseville, MN, 55113, USA, 1-651-639-1905.  
Actual components may vary from those shown.

# SANDMAN ASSEMBLY GUIDE

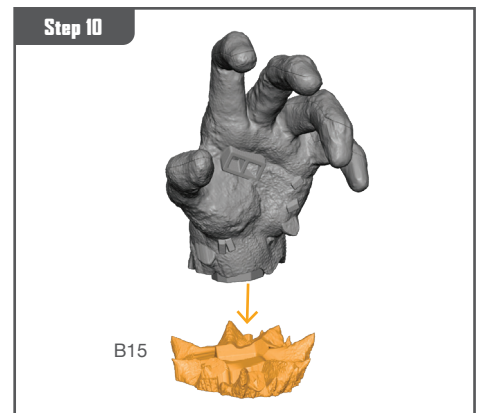
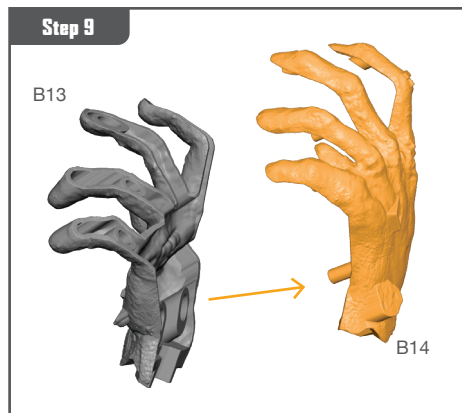
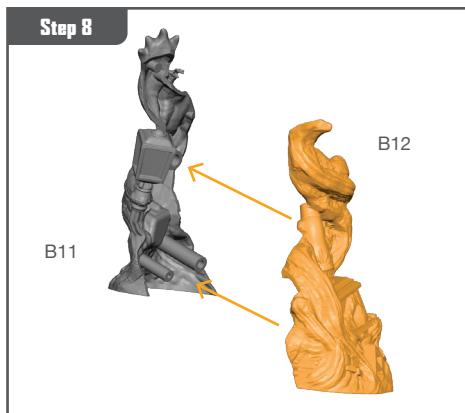


Permission granted to print or photocopy for personal use.



Atomic Mass Games and logo are TM of Atomic Mass Games.  
Atomic Mass Games, 1995 County Road B2 W, Roseville, MN, 55113, USA, 1-651-639-1905.  
Actual components may vary from those shown.

# SANDMAN ASSEMBLY GUIDE (CONTINUED)

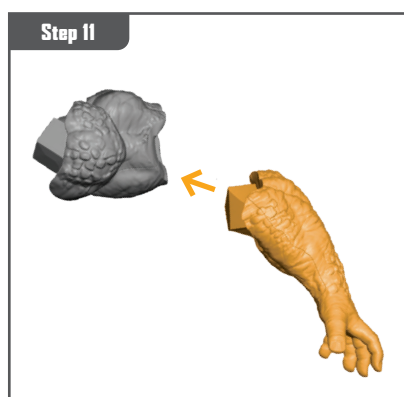
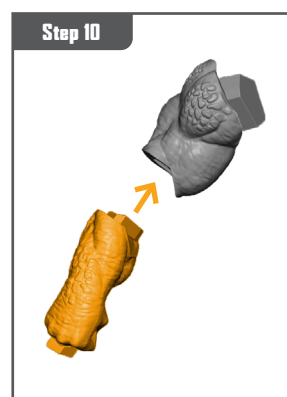
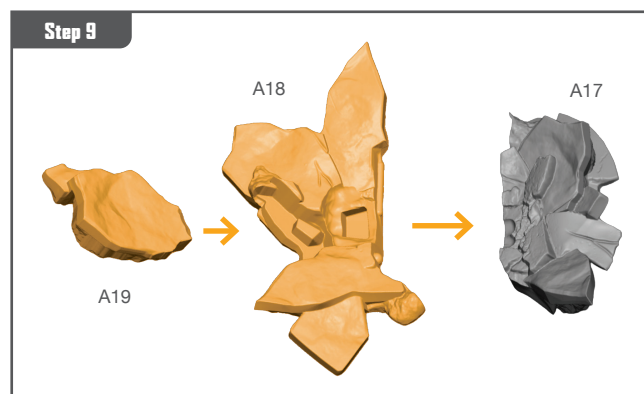
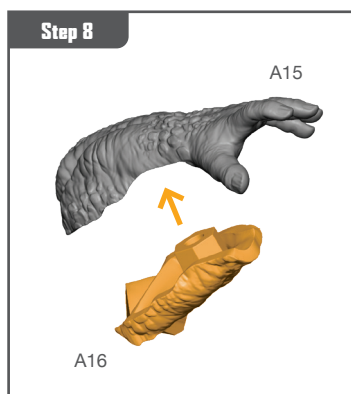
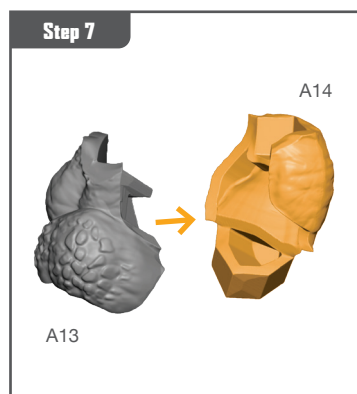
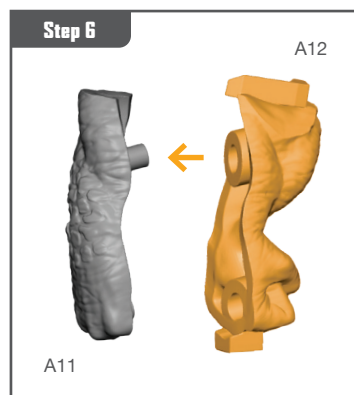
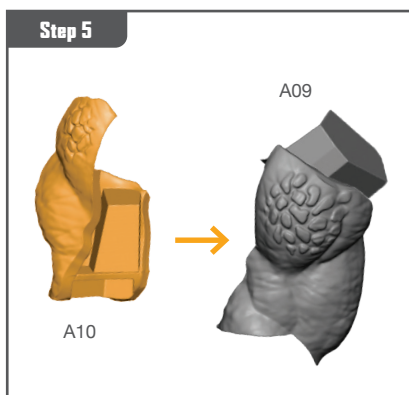
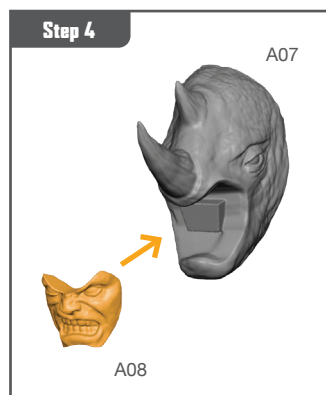
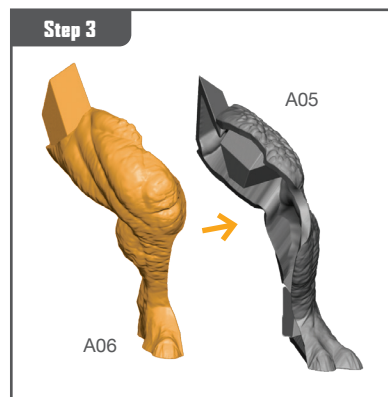
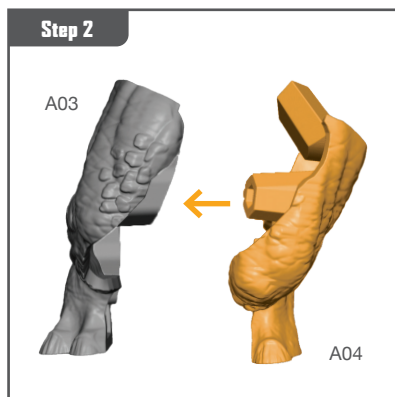
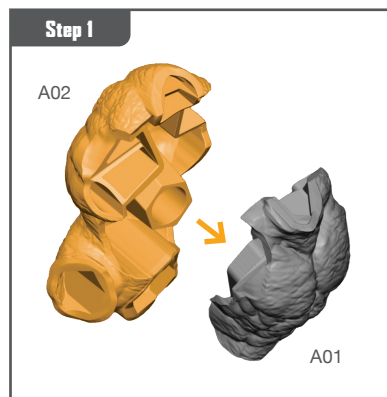


Permission granted to print or photocopy for personal use.



Atomic Mass Games and logo are TM of Atomic Mass Games.  
Atomic Mass Games, 1995 County Road B2 W, Roseville, MN, 55113, USA, 1-651-639-1905.  
Actual components may vary from those shown.

# RHINO ASSEMBLY GUIDE



Permission granted to print or photocopy for personal use.

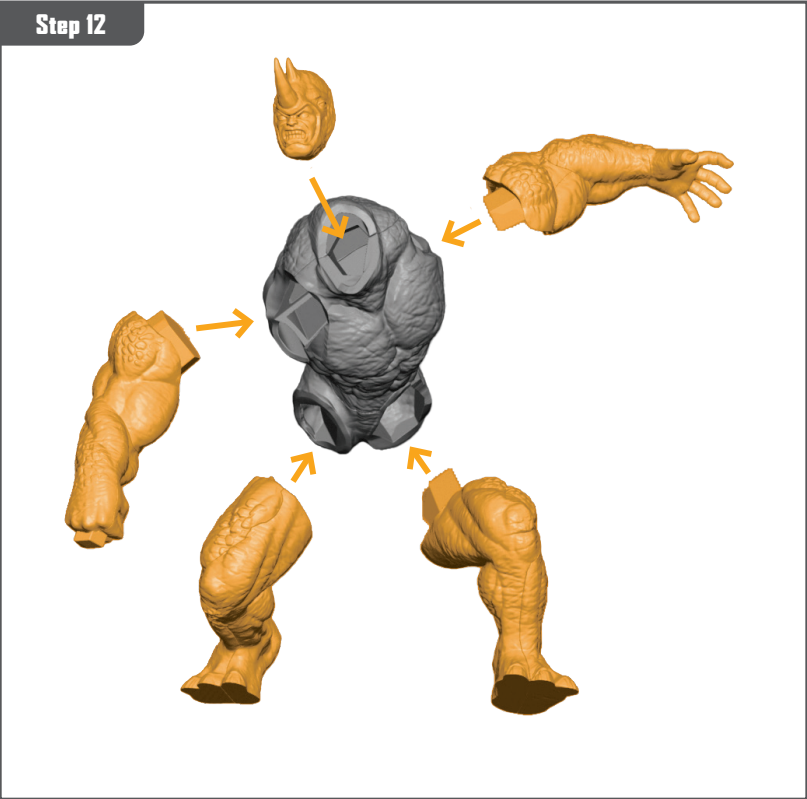


Atomic Mass Games and logo are TM of Atomic Mass Games.  
Atomic Mass Games, 1995 County Road B2 W, Roseville, MN, 55113, USA, 1-651-639-1905.  
Actual components may vary from those shown.

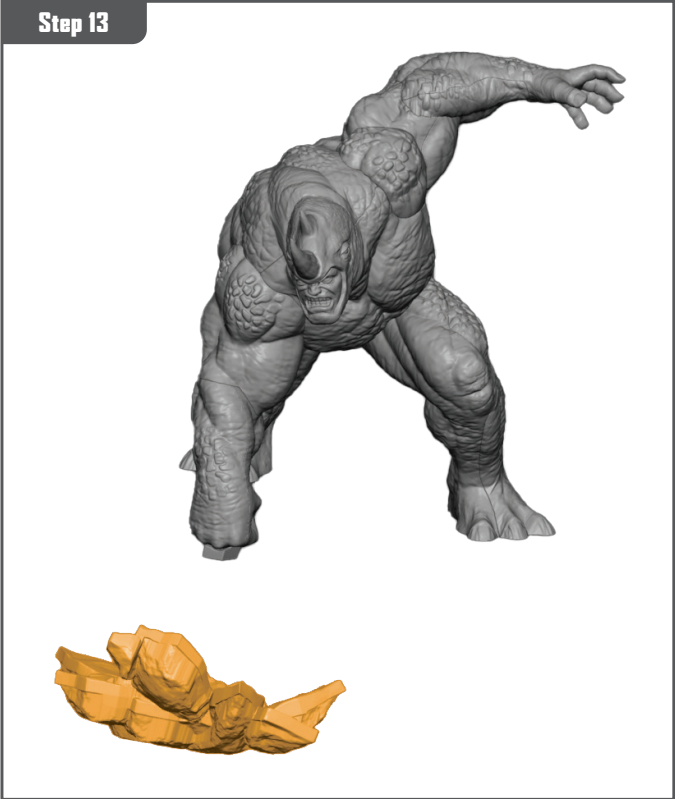


# RHINO ASSEMBLY GUIDE (CONTINUED)

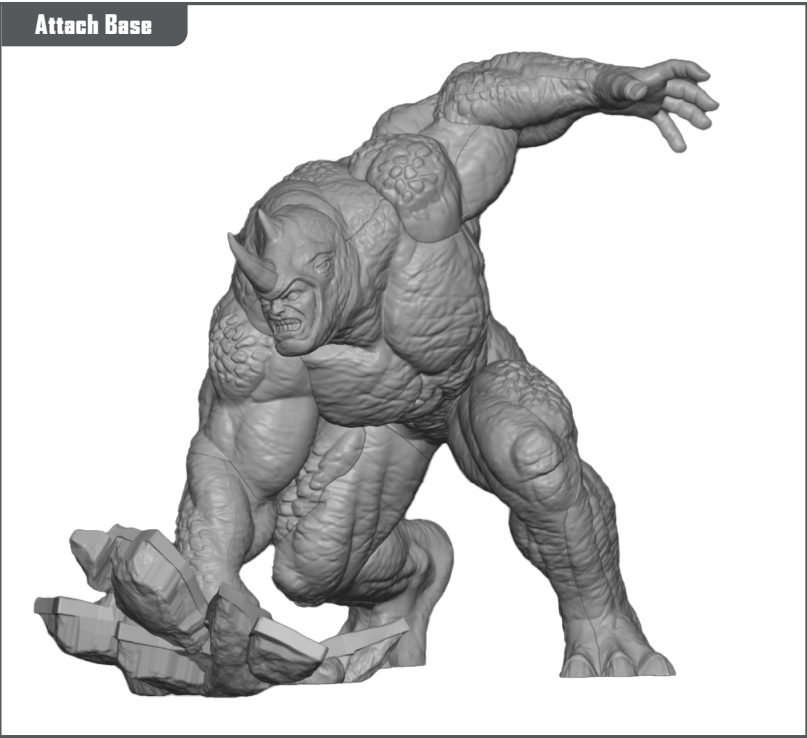
Step 12



Step 13



Attach Base

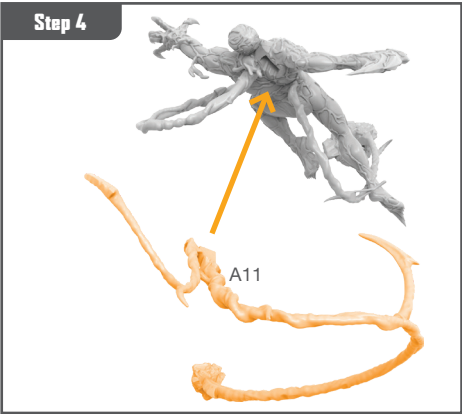
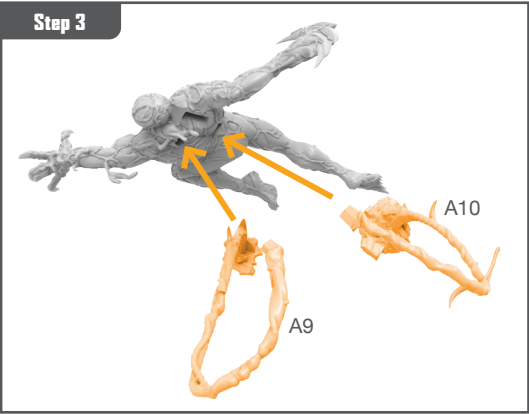
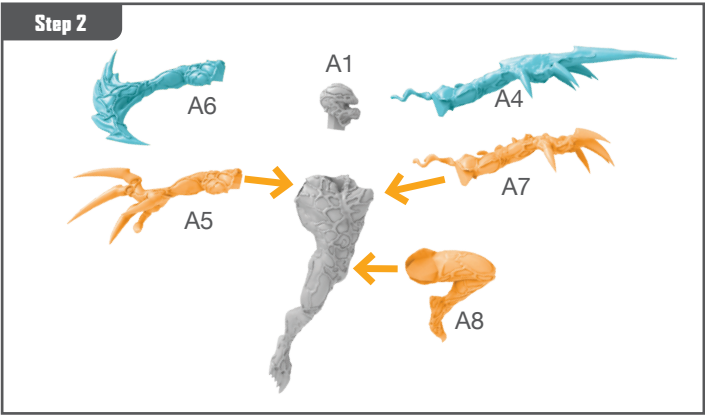
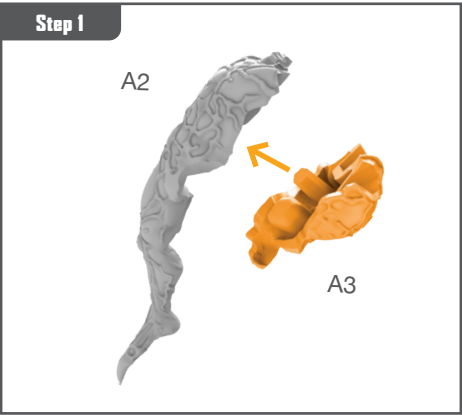


Permission granted to print or photocopy for personal use.



Atomic Mass Games and logo are TM of Atomic Mass Games.  
Atomic Mass Games, 1995 County Road B2 W, Roseville, MN, 55113, USA, 1-651-639-1905.  
Actual components may vary from those shown.

# CARNAGE ASSEMBLY GUIDE



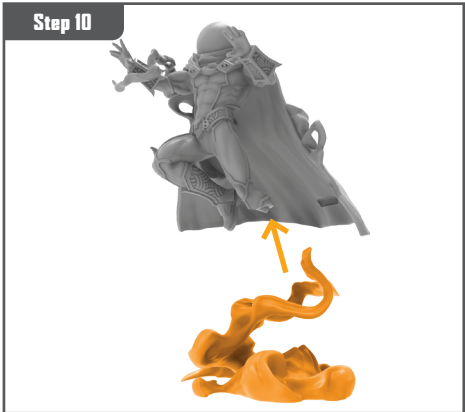
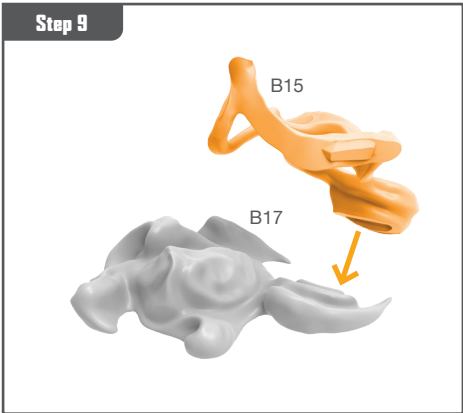
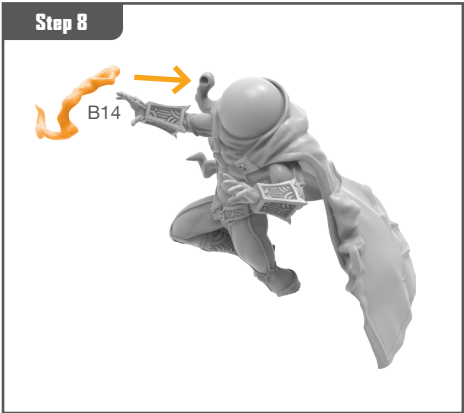
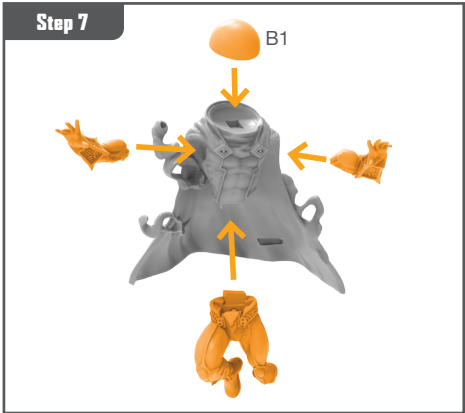
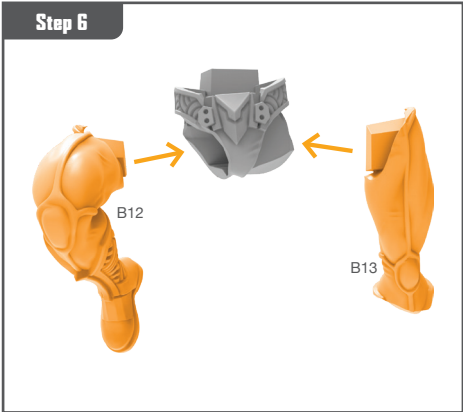
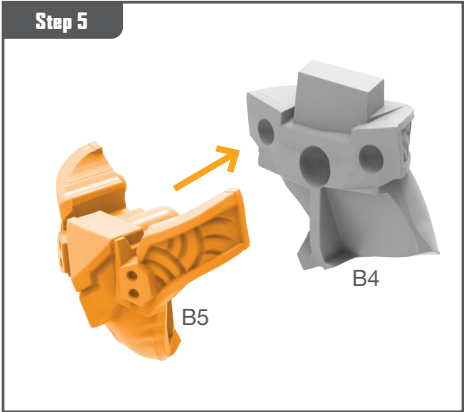
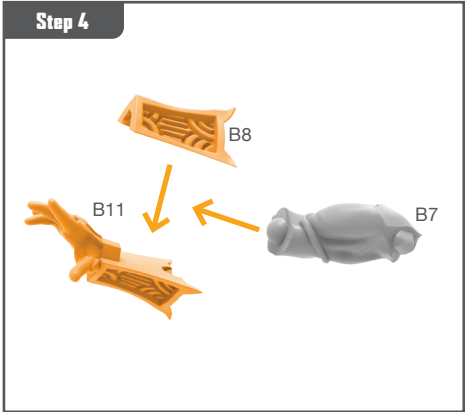
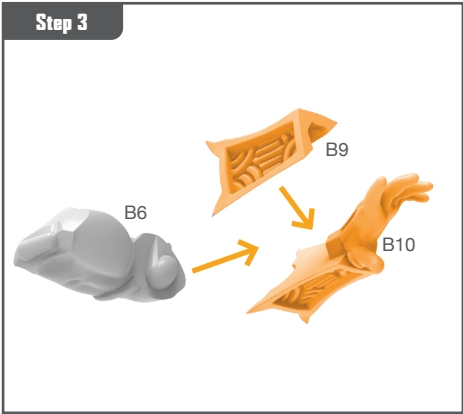
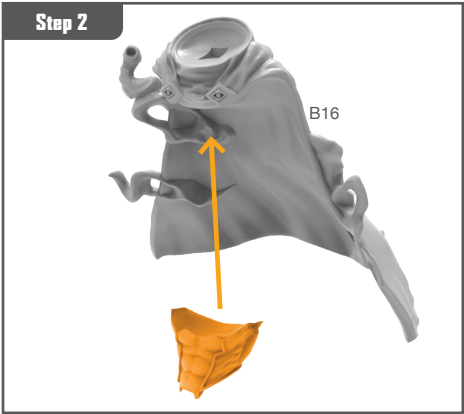
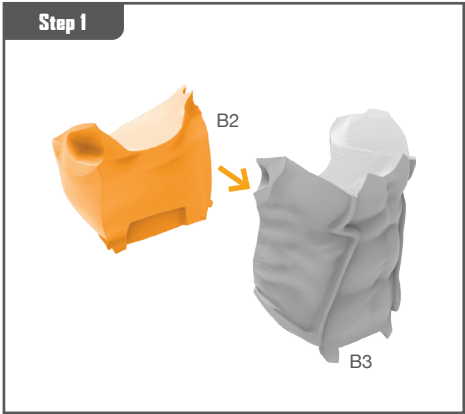
Permission granted to print or photocopy for personal use.



Atomic Mass Games and logo are TM of Atomic Mass Games.  
Atomic Mass Games, 1995 County Road B2 W, Roseville, MN, 55113, USA, 1-651-639-1905.  
Actual components may vary from those shown.



# MYSTERIO ASSEMBLY GUIDE



Permission granted to print or photocopy for personal use.



Atomic Mass Games and logo are TM of Atomic Mass Games.  
Atomic Mass Games, 1995 County Road B2 W, Roseville, MN, 55113, USA, 1-651-639-1905.  
Actual components may vary from those shown.