

# MARVEL CRISIS PROTOCOL MINIATURES GAME

CP271

## READ THIS FIRST

Be sure to use a pair of sharp hobby clippers to remove the miniature components from the Frame. Carefully clean the excess material and mold lines with a sharp hobby knife. Check the fit of each part before gluing. Use a small amount of hobby plastic glue to assemble the components. Use caution with all products and follow all manufacturer instructions. Adult supervision is recommended for children under the age of 16. Have fun!

## JOIN THE COMMUNITY

Use #PaintingProtocol to share your miniature photos and be a part of the Marvel: Crisis Protocol community!



AtomicMassGames



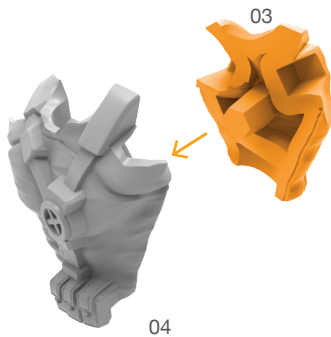
AtomicMassGames



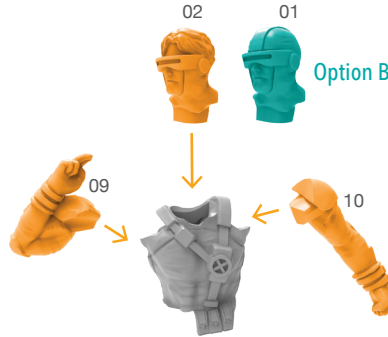
Atomic\_Mass\_Transmissions

## CYCLOPS ASSEMBLY GUIDE

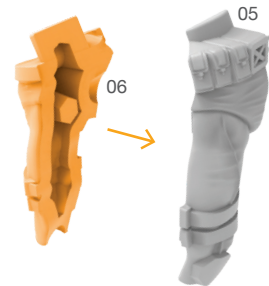
Step 1



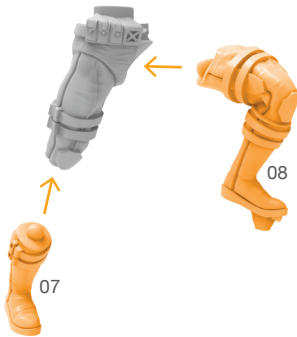
Step 2



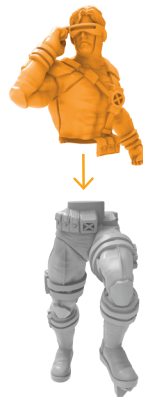
Step 3



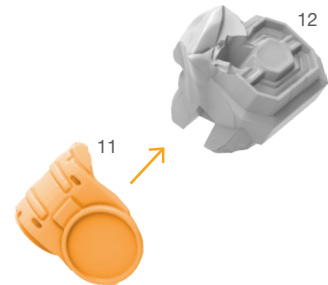
Step 4



Step 5



Step 6



Step 7



Attach Base

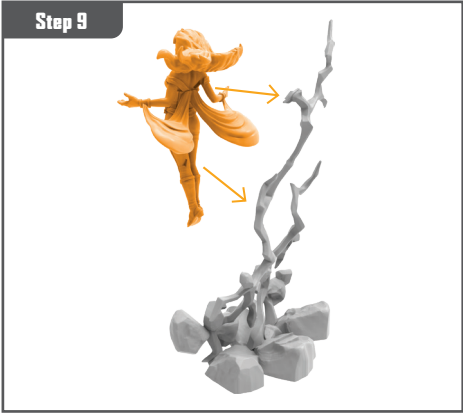
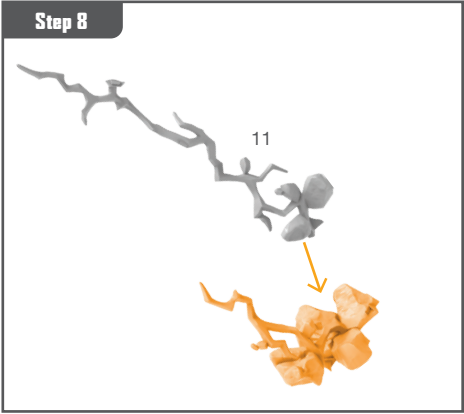
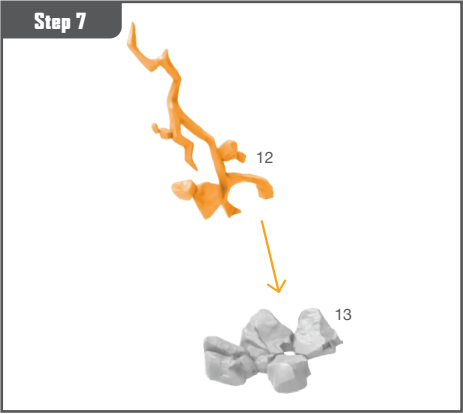
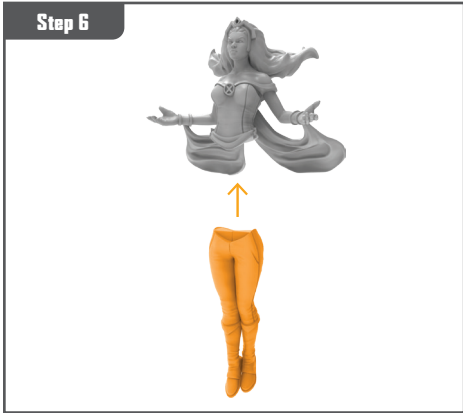
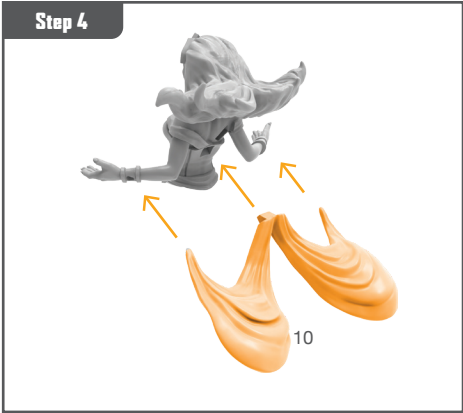
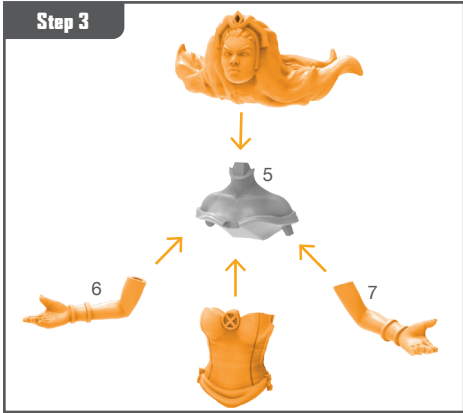
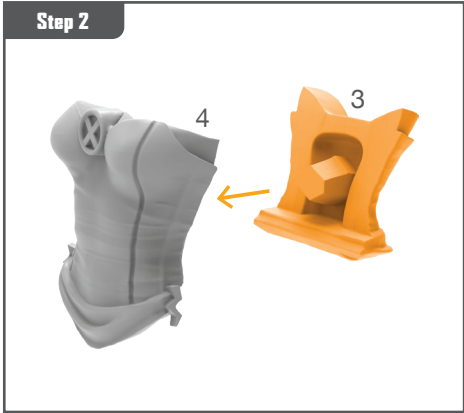
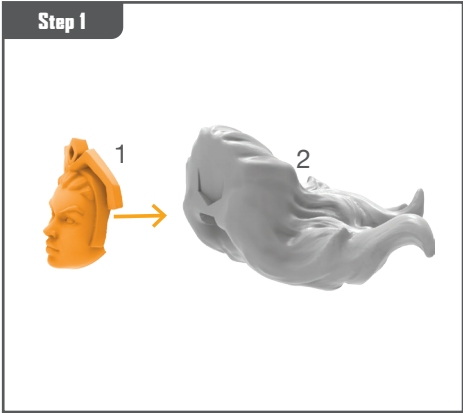


Permission granted to print or photocopy for personal use.



Atomic Mass Games and logo are TM of Atomic Mass Games.  
Atomic Mass Games, 1995 County Road B2 W, Roseville, MN, 55113, USA, 1-651-639-1905.  
Actual components may vary from those shown.

# STORM ASSEMBLY GUIDE



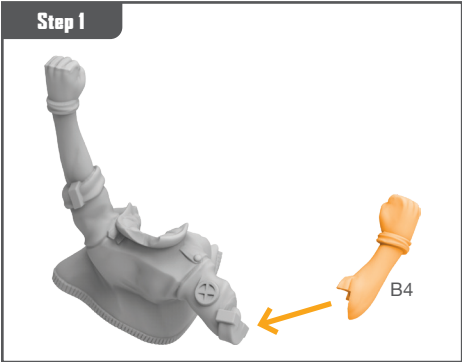
Permission granted to print or photocopy for personal use.



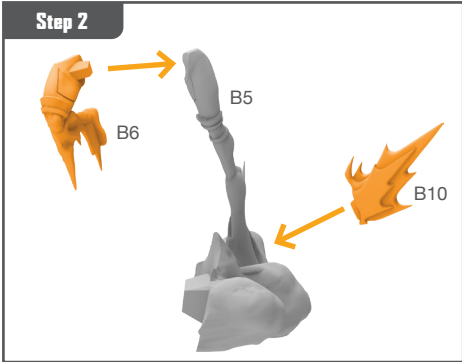
Atomic Mass Games and logo are TM of Atomic Mass Games.  
Atomic Mass Games, 1995 County Road B2 W, Roseville, MN, 55113, USA, 1-651-639-1905.  
Actual components may vary from those shown.

# ROGUE ASSEMBLY GUIDE

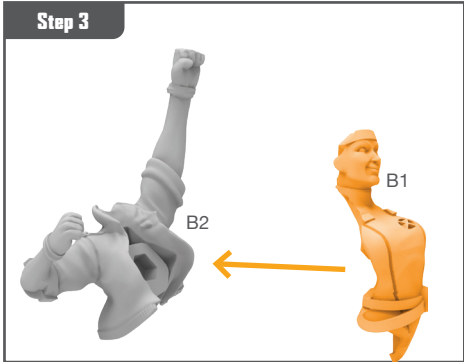
Step 1



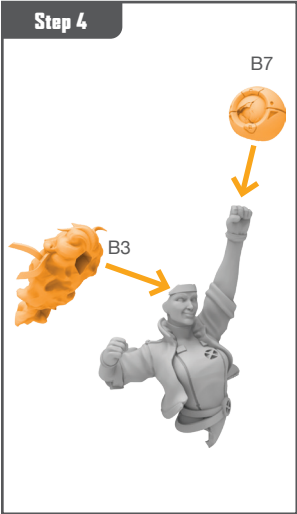
Step 2



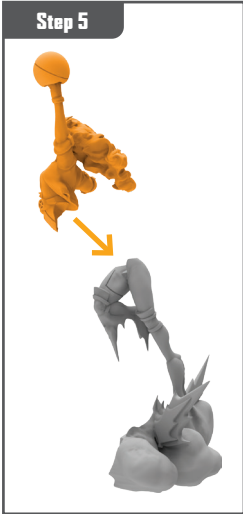
Step 3



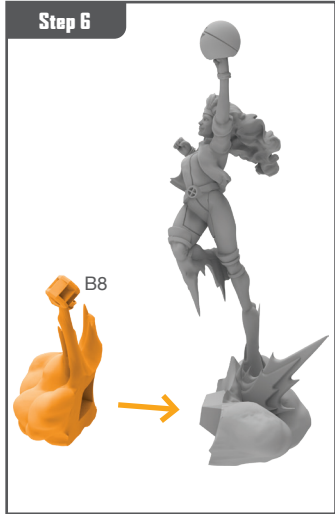
Step 4



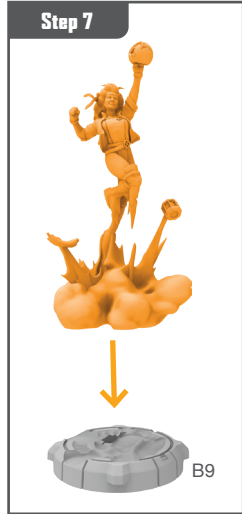
Step 5




Step 6



Step 7

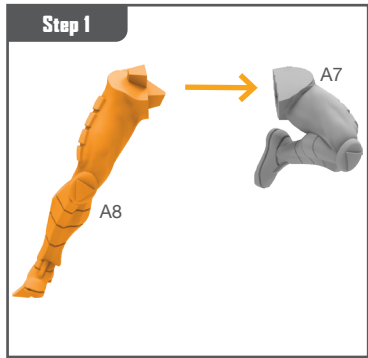


Attach Base

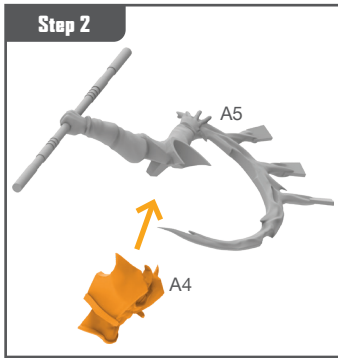


# GAMBIT ASSEMBLY GUIDE

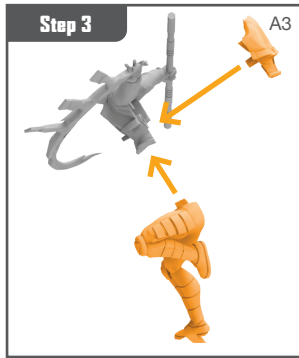
Step 1



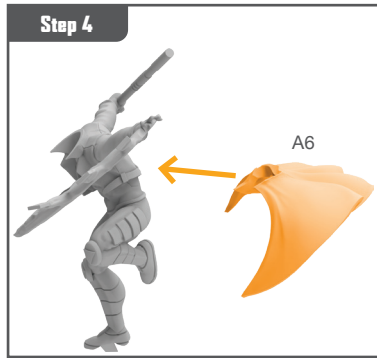
Step 2



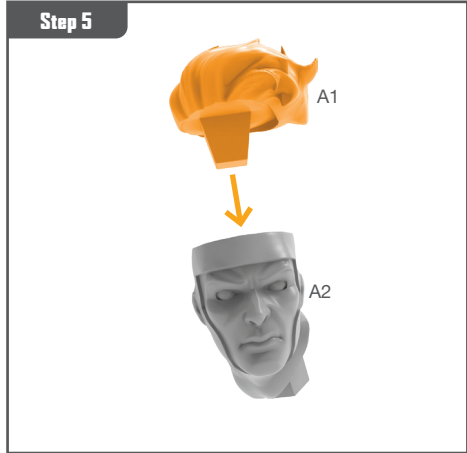
Step 3



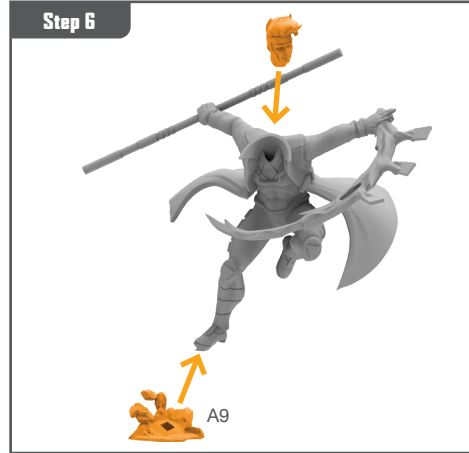
Step 4




Step 5



Step 6



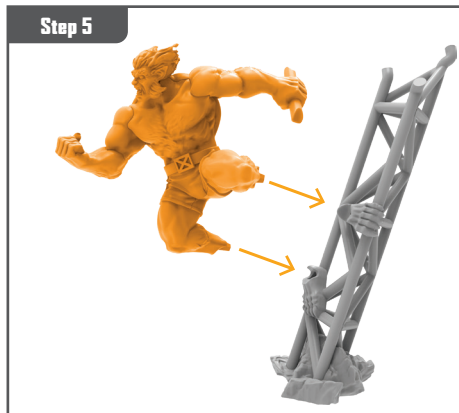
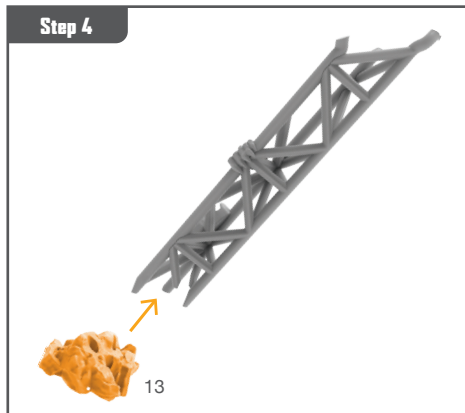
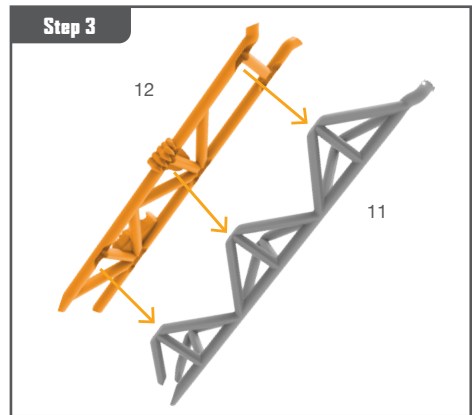
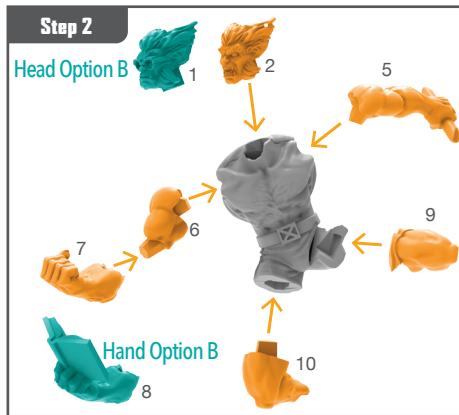
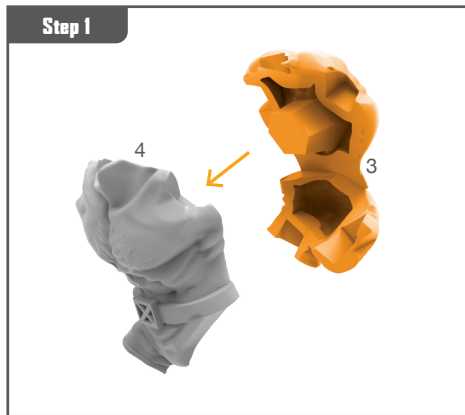
Attach Base



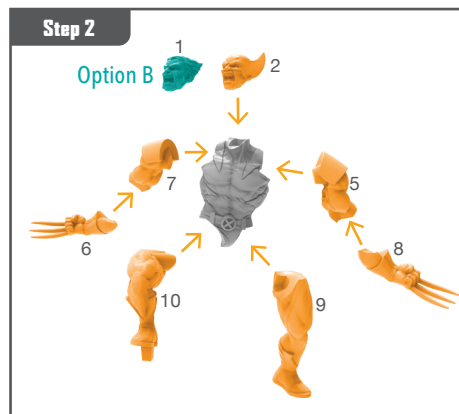
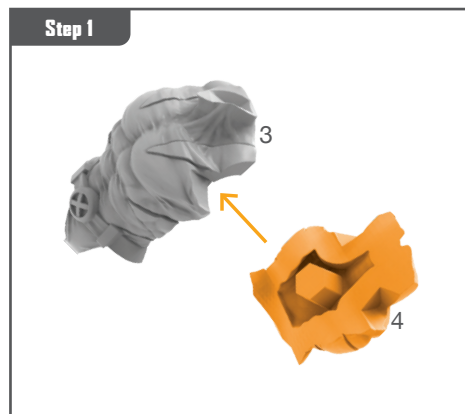


Permission granted to print or photocopy for personal use.  
Atomic Mass Games and logo are TM of Atomic Mass Games.  
Atomic Mass Games, 1995 County Road B2 W, Roseville, MN, 55113, USA, 1-651-639-1905.  
Actual components may vary from those shown.

# BEAST ASSEMBLY GUIDE

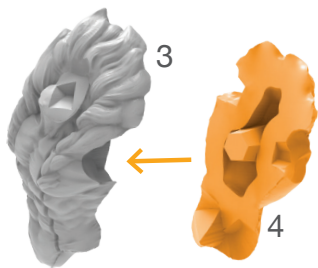


# WOLVERINE ASSEMBLY GUIDE

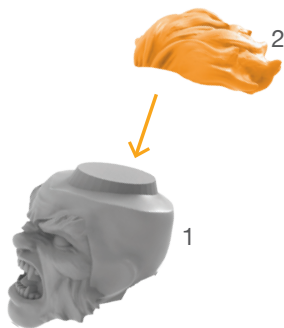


# SABRETOOTH ASSEMBLY GUIDE

Step 1



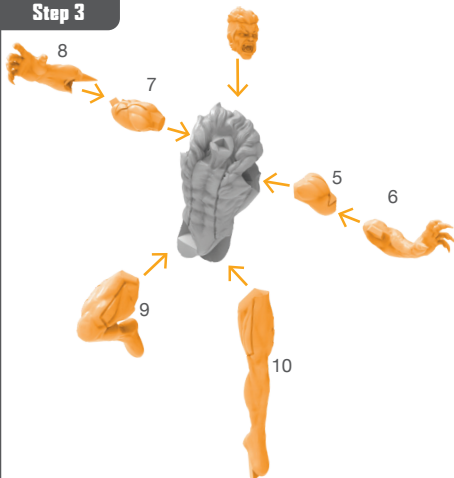
Step 2



Attach Base



Step 3

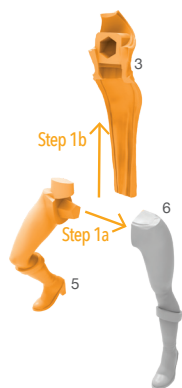


Step 4

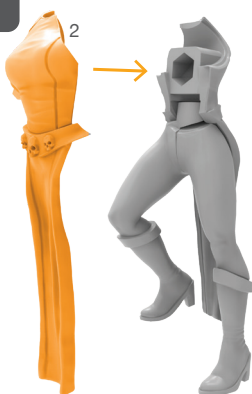


# MYSTIQUE ASSEMBLY GUIDE

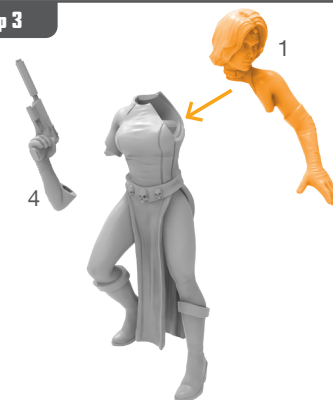
Step 1



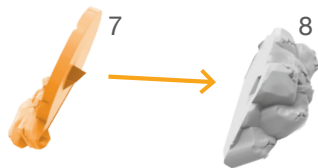
Step 2



Step 3



Step 4



Step 5

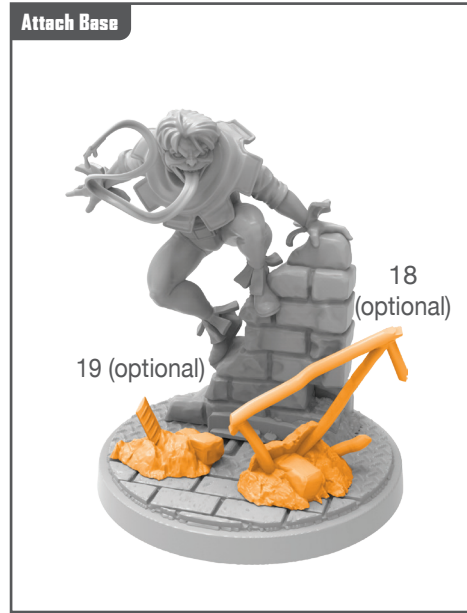
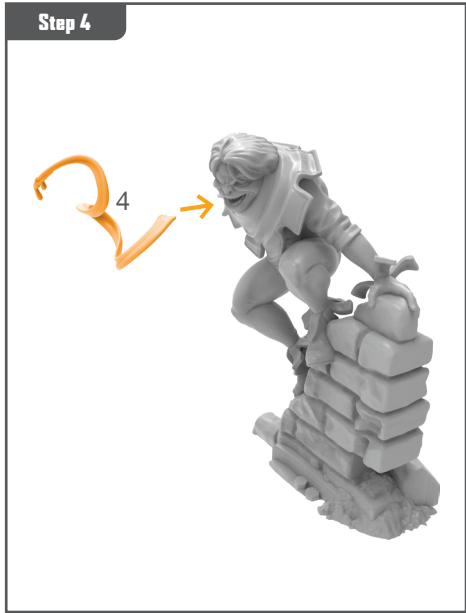
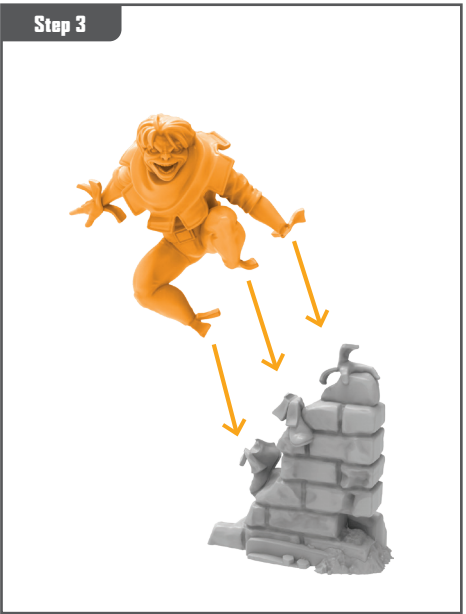
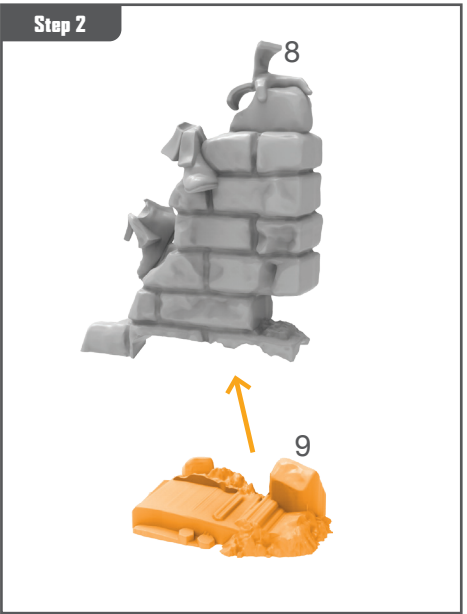
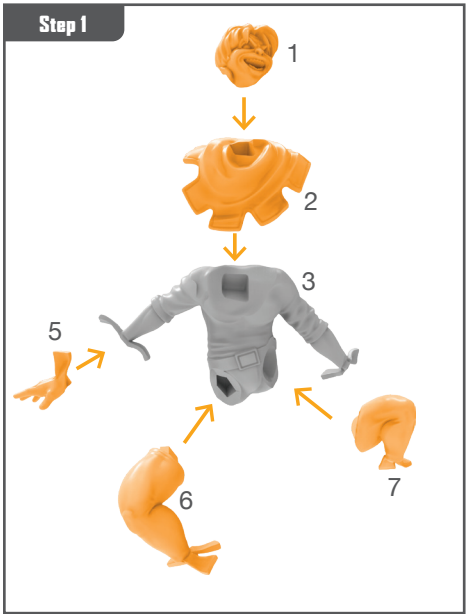


Attach Base





# TOAD ASSEMBLY GUIDE

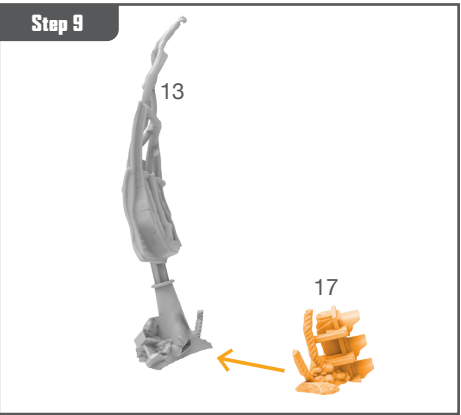
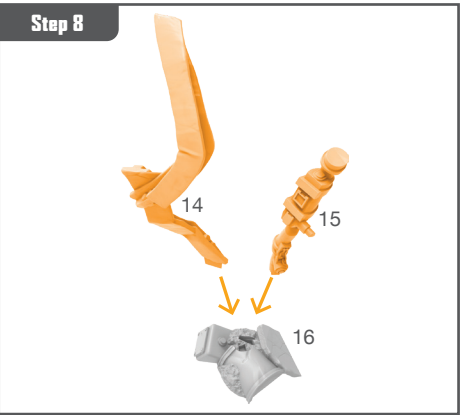
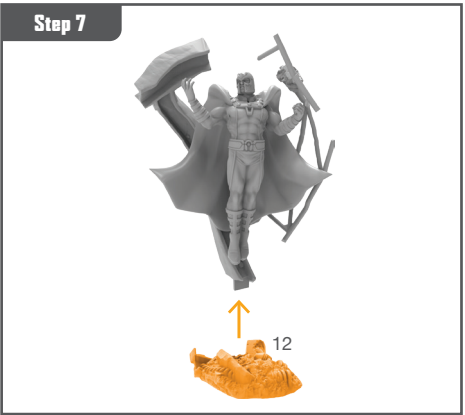
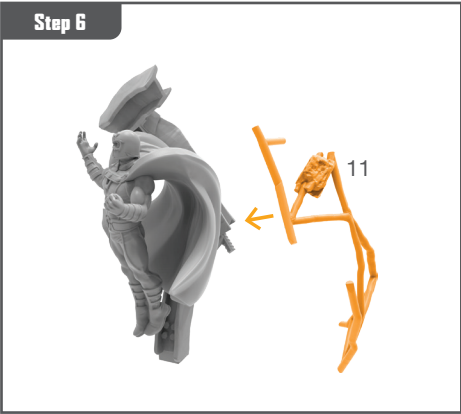
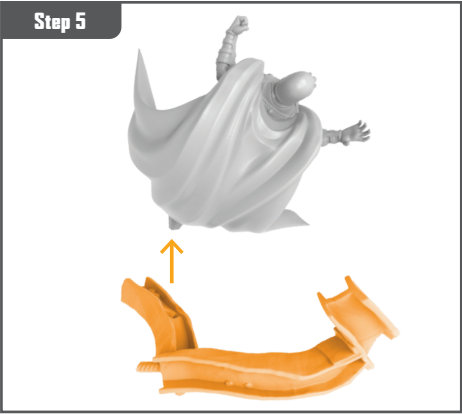
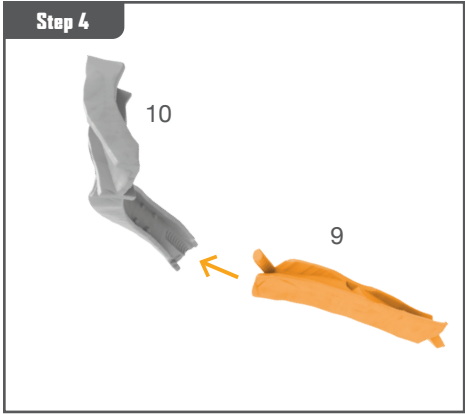
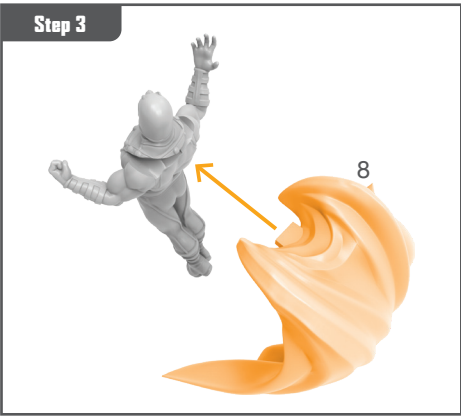
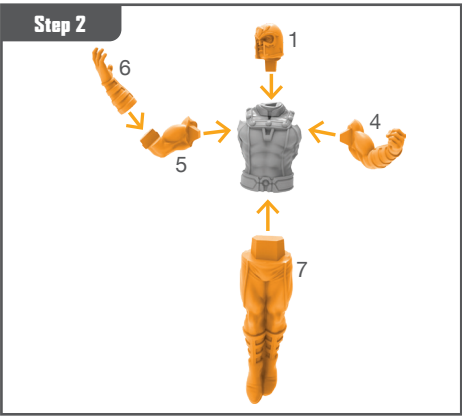
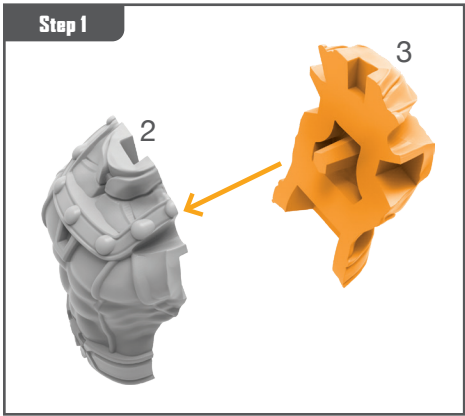


Permission granted to print or photocopy for personal use.



Atomic Mass Games and logo are TM of Atomic Mass Games.  
Atomic Mass Games, 1995 County Road B2 W, Roseville, MN, 55113, USA, 1-651-639-1905.  
Actual components may vary from those shown.

# MAGNETO ASSEMBLY GUIDE



Permission granted to print or photocopy for personal use.



Atomic Mass Games and logo are TM of Atomic Mass Games.  
Atomic Mass Games, 1995 County Road B2 W, Roseville, MN, 55113, USA, 1-651-639-1905.  
Actual components may vary from those shown.