



READ THIS FIRST

Be sure to use a pair of sharp hobby clippers to remove the miniature components from the frame. Carefully clean the excess material and mold lines with a sharp hobby knife. Check the fit of each part before gluing. Use a small amount of hobby plastic glue to assemble the components. Use caution with all products and follow all manufacturer instructions. Adult supervision is recommended for children under the age of 16. Have fun!

JOIN THE COMMUNITY

Use #MyStarWarsLegion to share your miniature photos and be a part of the *Star Wars™: Legion* community!



AtomicMassGames



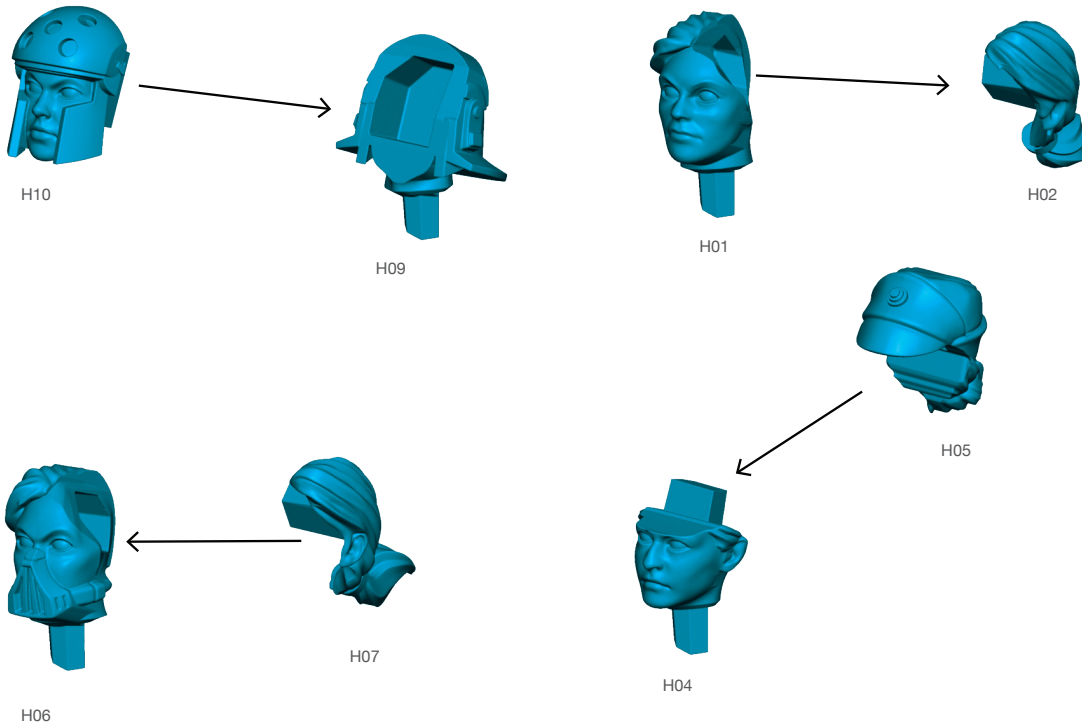
AtomicMassGames



Atomic_Mass_Transmissions

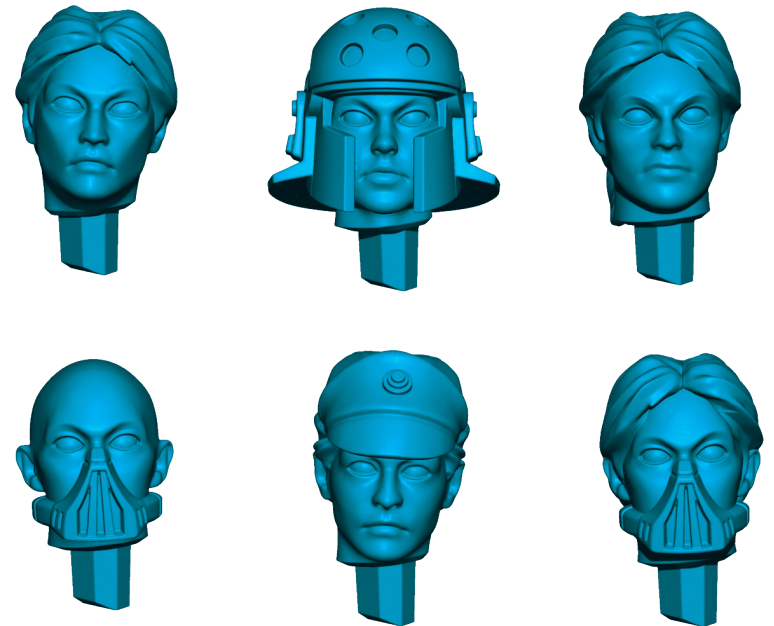
ALTERNATE HEADS S W Q 0 9 A S S E M B L Y (H)

STEP 1



FINAL

ALTERNATE OPTION



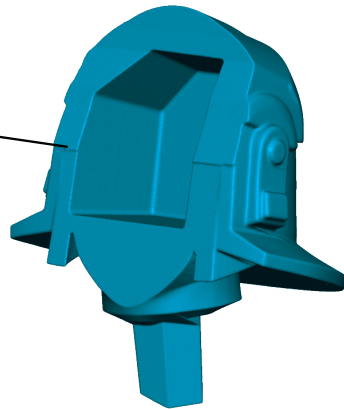
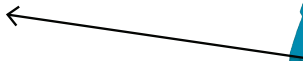
ALTERNATE HEADS

SWQ09 ASSEMBLY (H)

STEP 1



H16

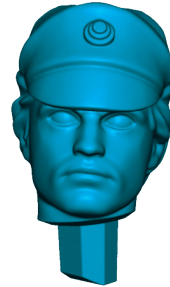


H15

FINAL

ALTERNATE
OPTION

H13



H11



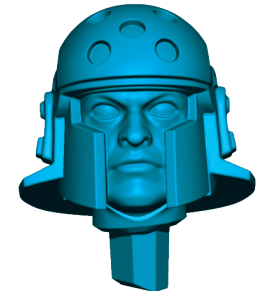
H12



H17

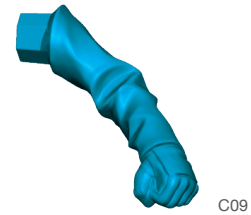


H14



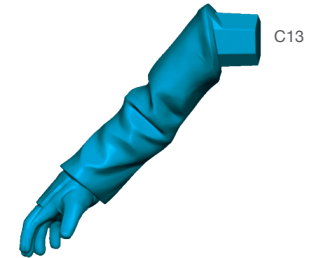
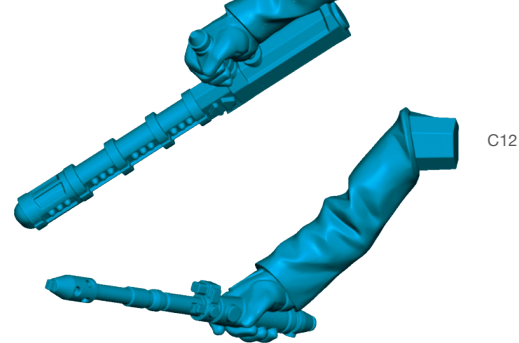
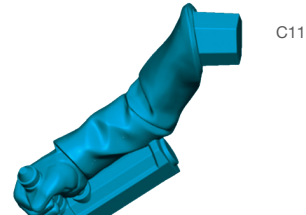
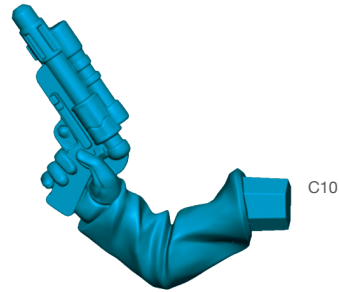
IMPERIAL OFFICER
ALTERNATE ARMS (LEFT)
S W Q 0 9 A S S E M B L Y (C)

ALTERNATE
OPTION



IMPERIAL OFFICER
ALTERNATE ARMS (RIGHT)
S W Q 0 9 A S S E M B L Y (C)

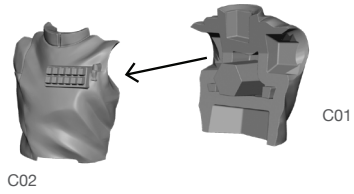
ALTERNATE
OPTION



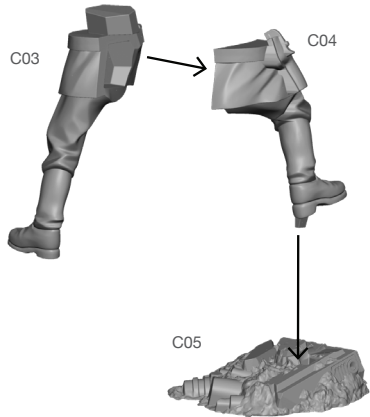
IMPERIAL OFFICER

SWQ09 ASSEMBLY (C)

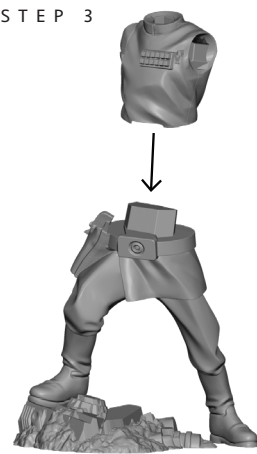
STEP 1



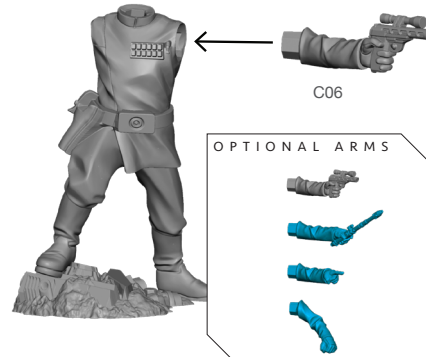
STEP 2



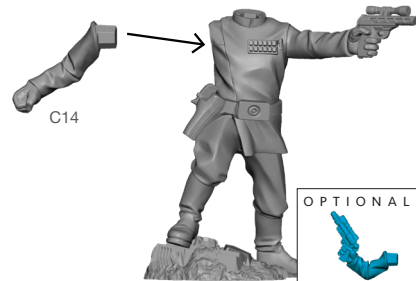
STEP 3



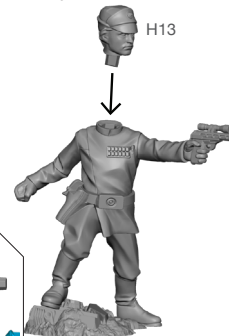
STEP 4



STEP 5

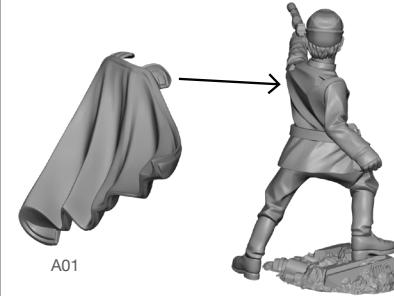


STEP 6

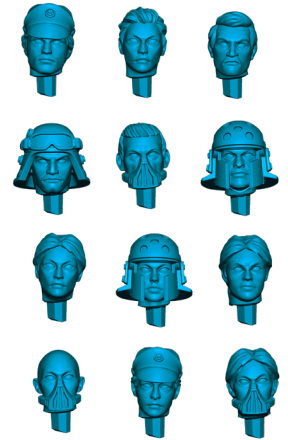


OPTIONAL ARMS

STEP 7



OPTIONAL HEADS

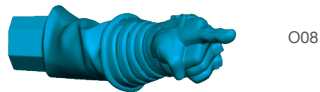
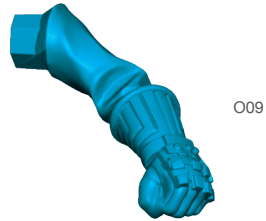
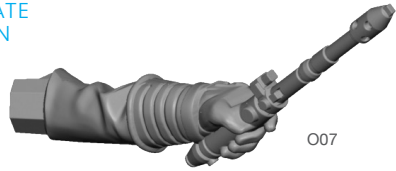


FINAL



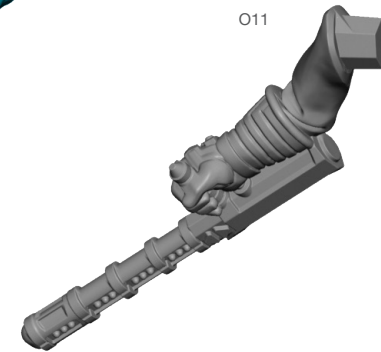
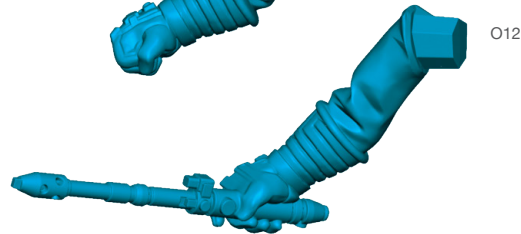
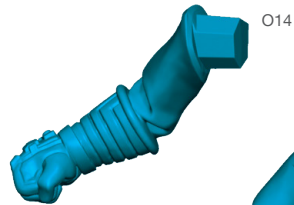
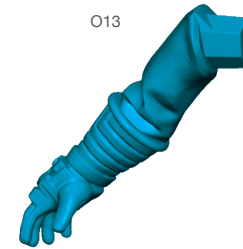
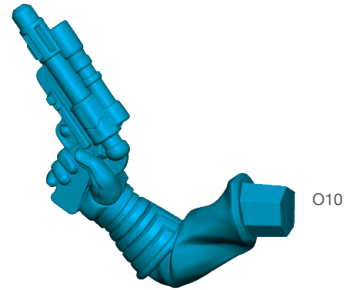
IMPERIAL OFFICER
ALTERNATE ARMS (LEFT)
S W Q 0 9 A S S E M B L Y (O)

ALTERNATE
OPTION



IMPERIAL OFFICER
ALTERNATE ARMS (RIGHT)
S W Q 0 9 A S S E M B L Y (O)

ALTERNATE
OPTION



IMPERIAL OPERATIVE

SWQ09 ASSEMBLY (O)

