

STAR WARS™

LEGION™

READ THIS FIRST

Be sure to use a pair of sharp hobby clippers to remove the miniature components from the frame. Carefully clean the excess material and mold lines with a sharp hobby knife. Check the fit of each part before gluing. Use a small amount of hobby plastic glue to assemble the components. Use caution with all products and follow all manufacturer instructions. Adult supervision is recommended for children under the age of 16. Have fun!

JOIN THE COMMUNITY

Use #MyStarWarsLegion to share your miniature photos and be a part of the *Star Wars™: Legion* community!



AtomicMassGames



AtomicMassGames



Atomic_Mass_Transmissions

A-A5 SPEEDER TRUCK INTERIOR SWQ92 SUB - ASSEMBLY (A)

STEP 3

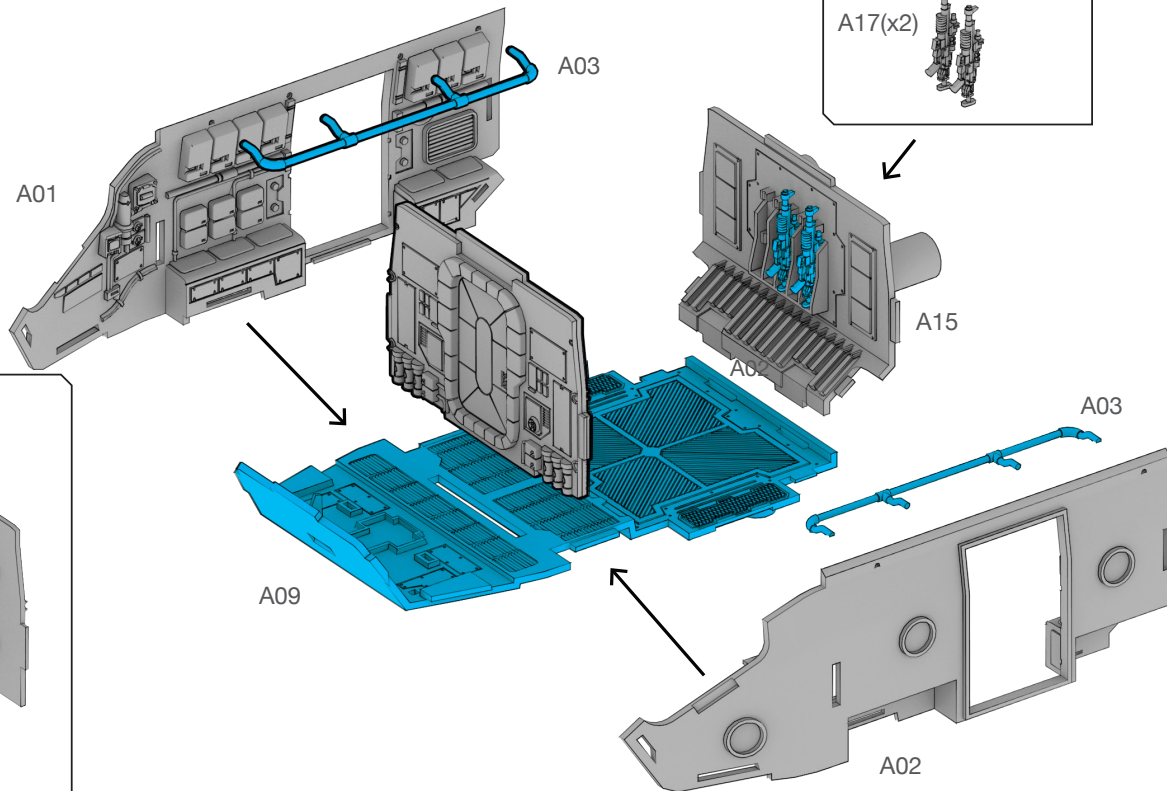
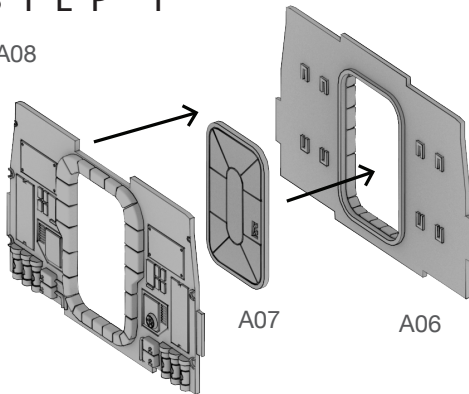
STEP 2

A17(x2)



STEP 1

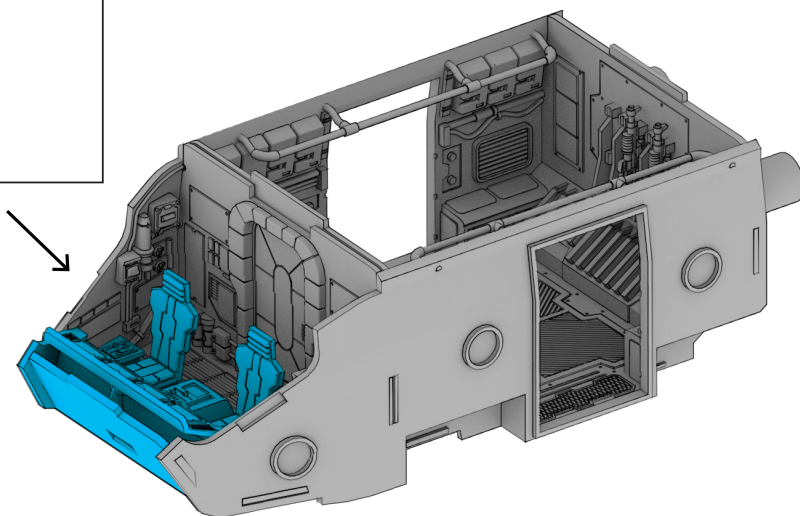
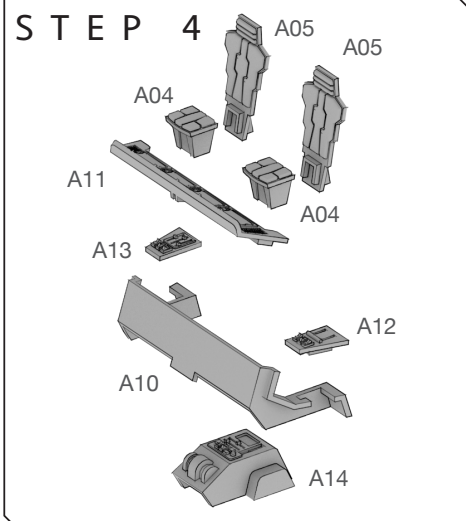
A08



VEHICLE INTERIOR (CONT)

SWQ92 SUB-ASSEMBLY (A)

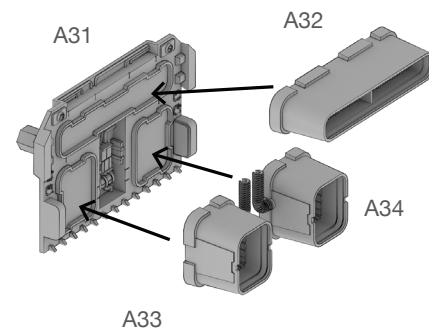
FINAL



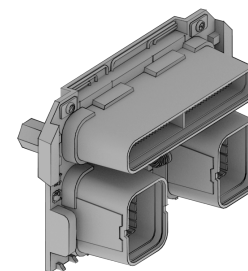
VEHICLE THRUSTER

SWQ92 SUB-ASSEMBLY (A)

STEP 1



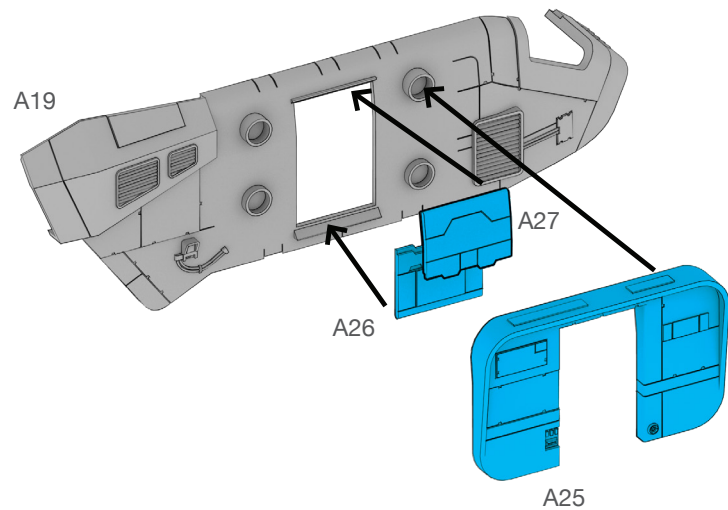
FINAL



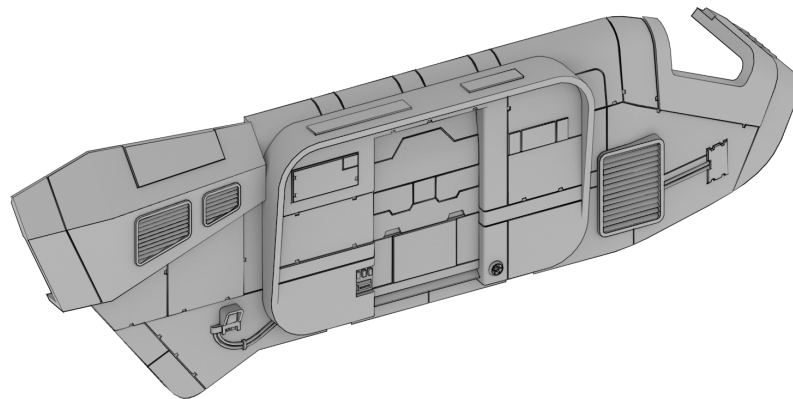
VEHICLE SIDE PANELS

SWQ92 SUB-ASSEMBLY (A)

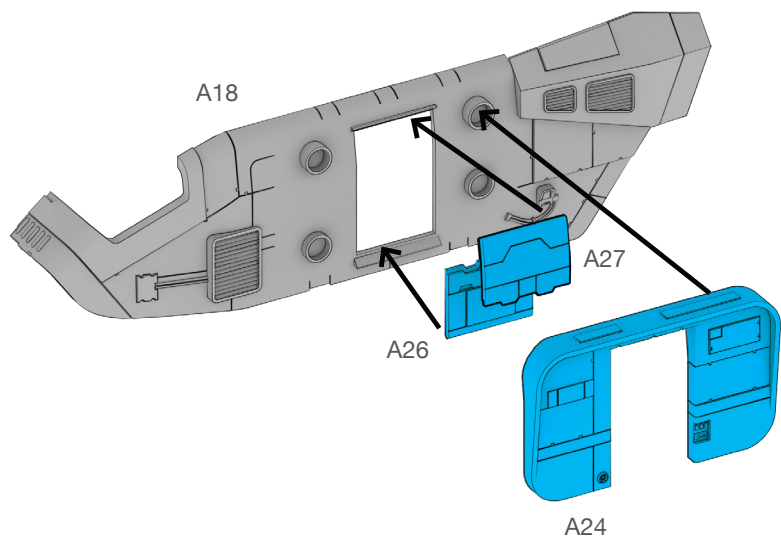
STEP 1



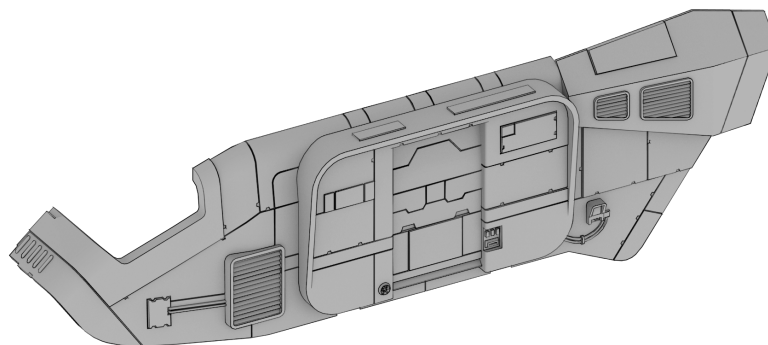
FINAL



STEP 1

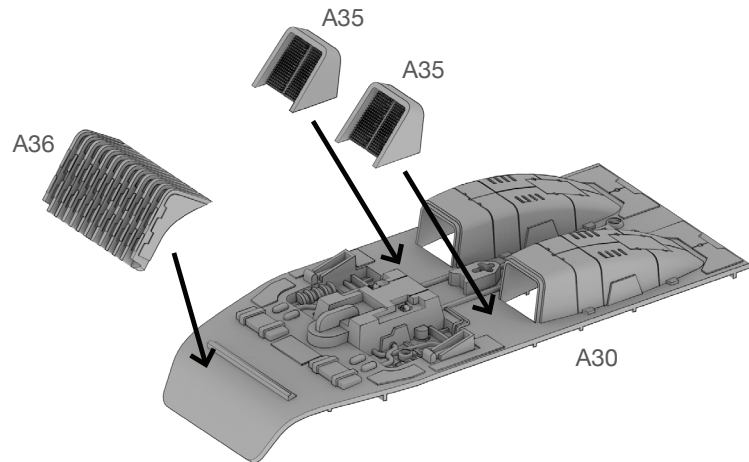


FINAL

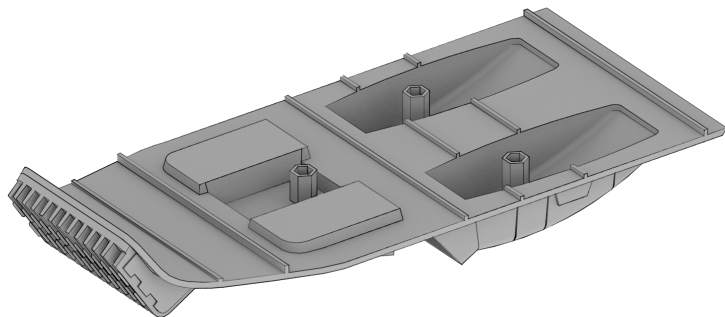


VEHICLE UNDERCARRIAGE SWQ92 SUB-ASSEMBLY (A)

STEP 1



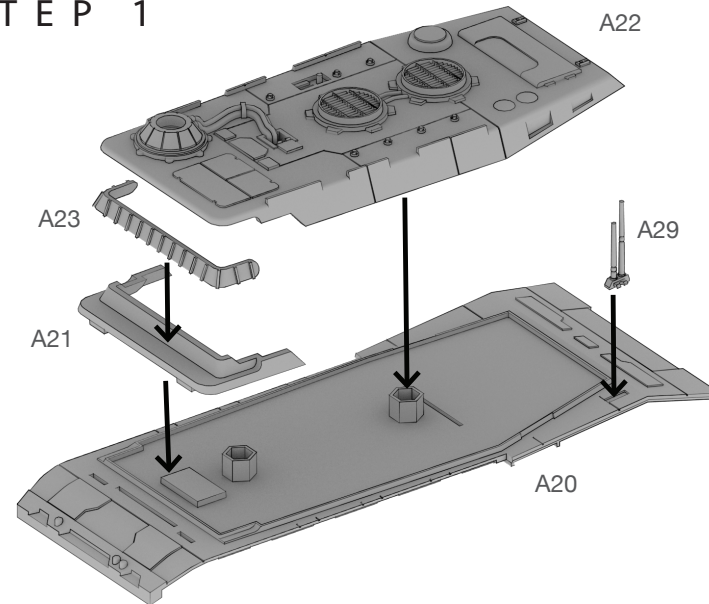
FINAL



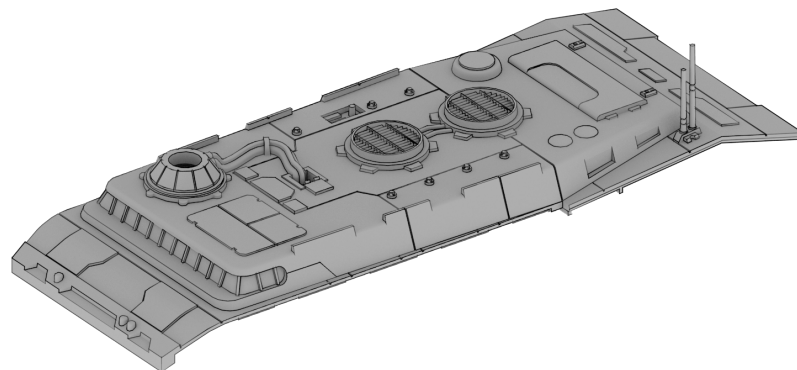
FLIP UPSIDE DOWN

VEHICLE ROOF SWQ92 SUB-ASSEMBLY (A)

STEP 1



FINAL

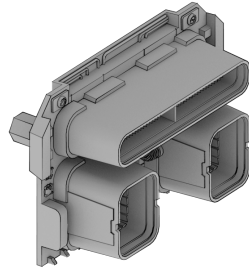


A-A5 SPEEDER TRUCK

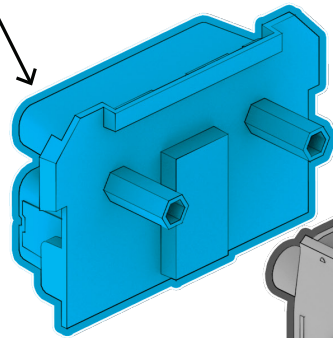
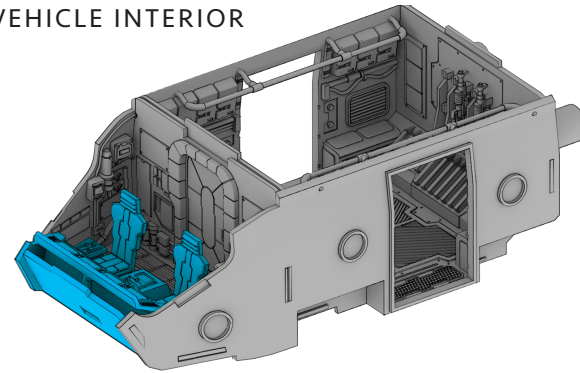
SWQ92 ASSEMBLY (A)

STEP 1

VEHICLE THRUSTER

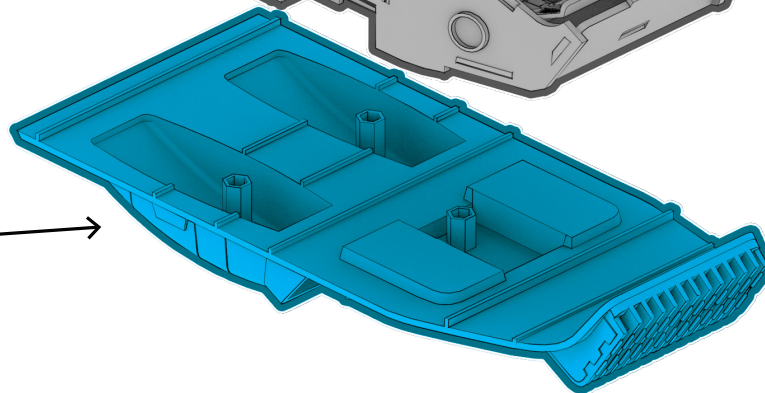
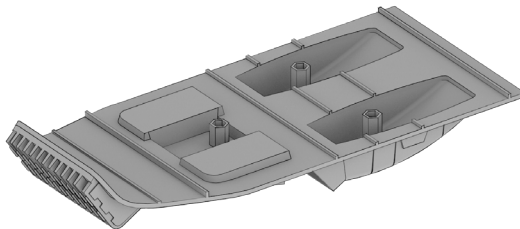


VEHICLE INTERIOR



A16

VEHICLE UNDERCARRIAGE

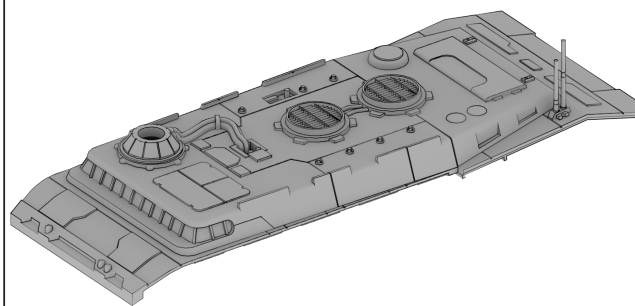


A-A5 SPEEDER TRUCK (CONT)

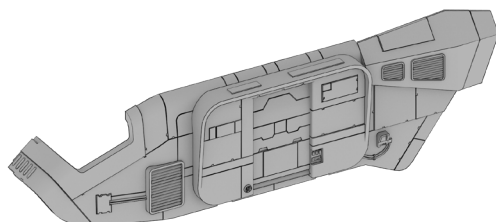
SWQ92 ASSEMBLY (A)

STEP 2

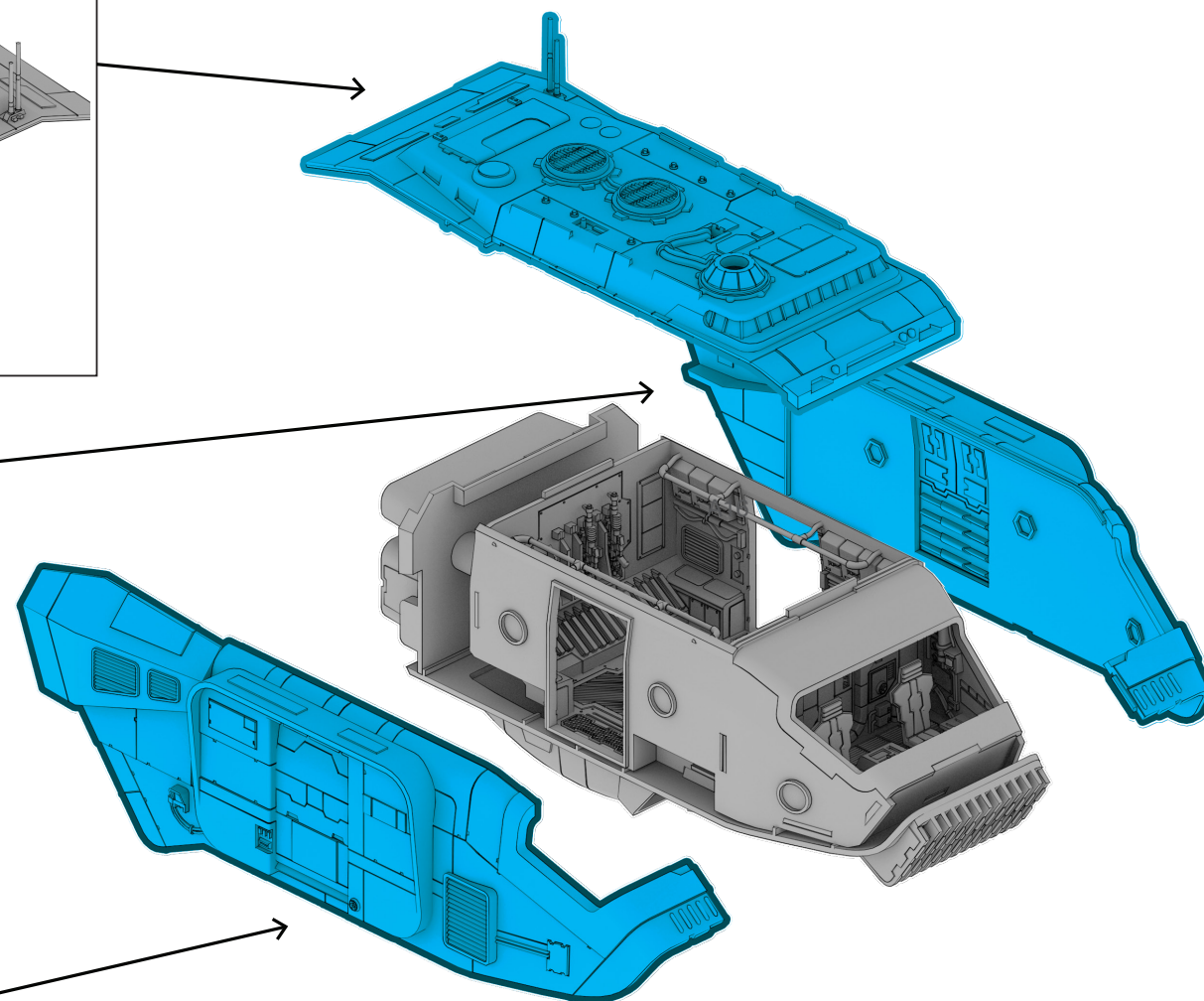
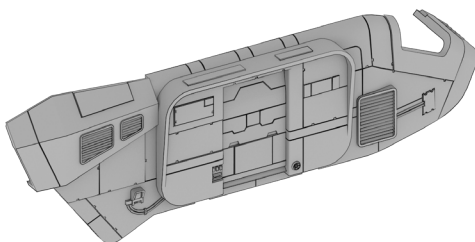
VEHICLE ROOF



VEHICLE SIDE PANEL



VEHICLE SIDE PANEL

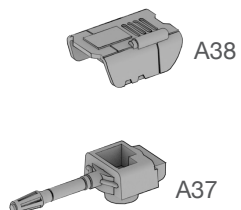


A-A5 SPEEDER TRUCK (CONT)

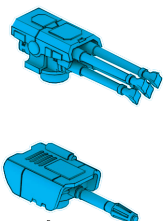
SWQ92 ASSEMBLY (A)

FINAL

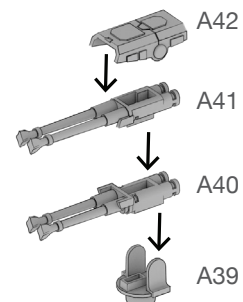
HEAVY LASER RETROFIT



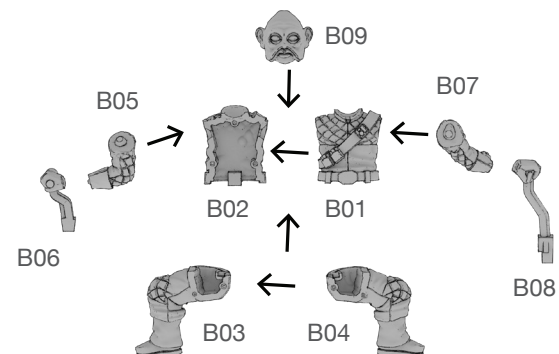
ALTERNATE OPTION



AG-2G QUAD LASER



A-A5 SPEEDER TRUCK DRIVER (B)



FINAL

