

READ THIS FIRST

Be sure to use a pair of sharp hobby clippers to remove the miniature components from the frame. Carefully clean the excess material and mold lines with a sharp hobby knife. Check the fit of each part before gluing. Use a small amount of hobby plastic glue to assemble the components. Use caution with all products and follow all manufacturer instructions. Adult supervision is recommended for children under the age of 16. Have fun!

JOIN THE COMMUNITY

Use #MyStarWarsLegion to share your miniature photos and be a part of the Star Wars™: Legion community!



Atomic Mass Games



Atomic_Mass_Transmissions

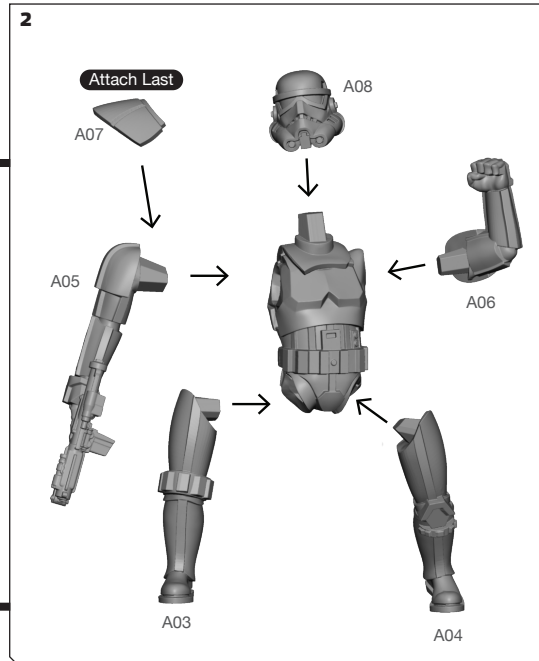
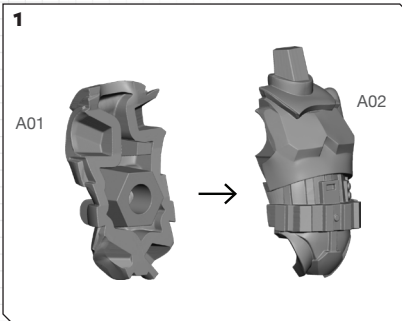


AtomicMassGames



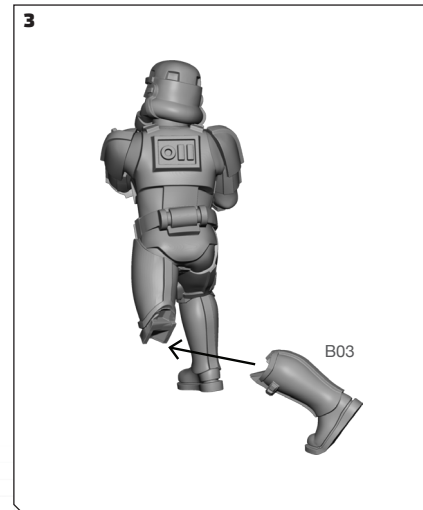
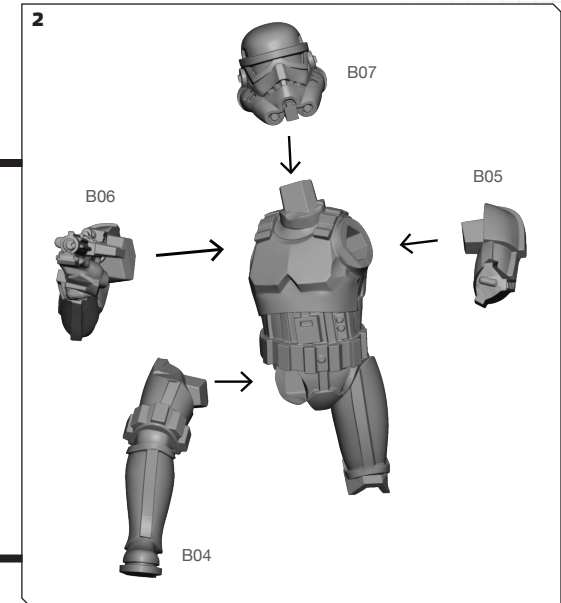
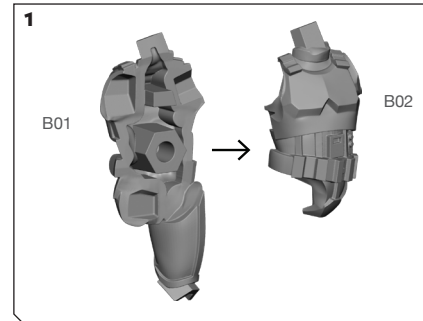
STORMTROOPER LEADER

SWQ 11 ASSEMBLY (A)



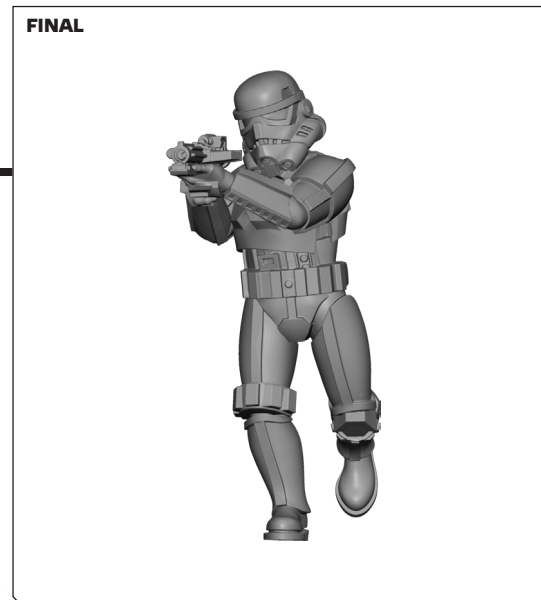
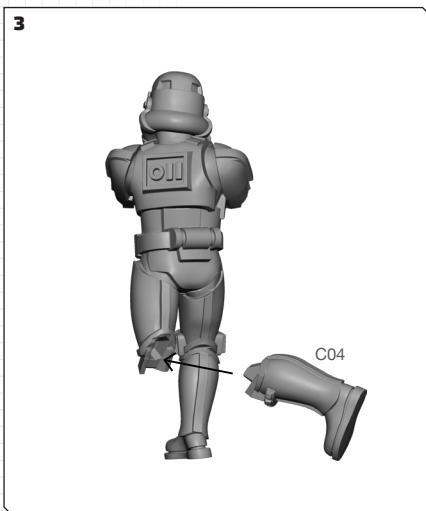
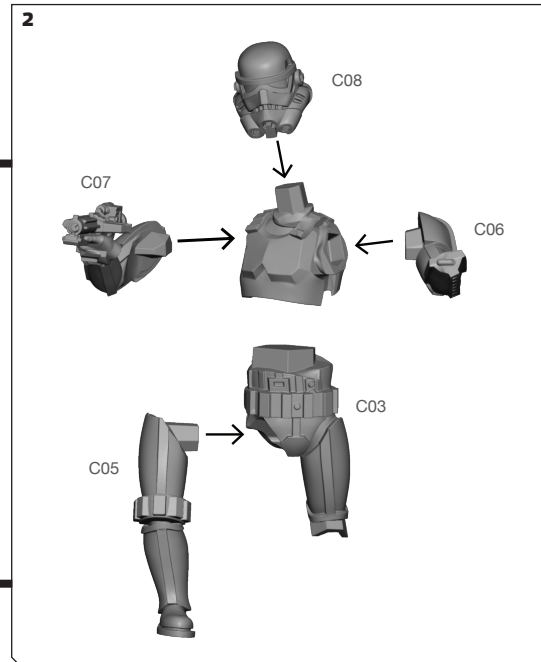
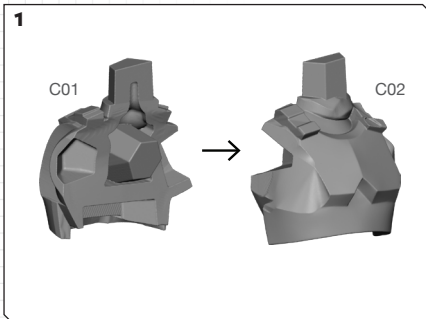
STORMTROOPER

SWQ 11 ASSEMBLY (B)



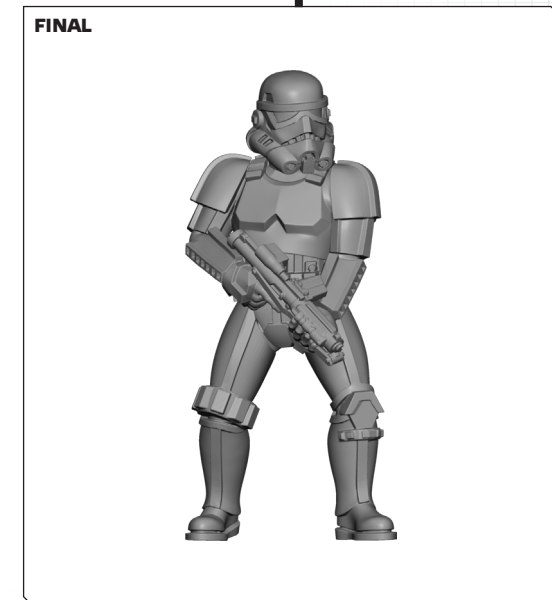
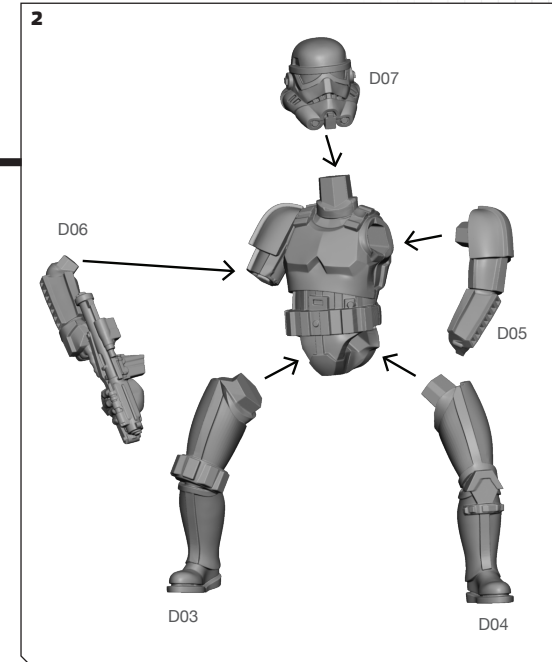
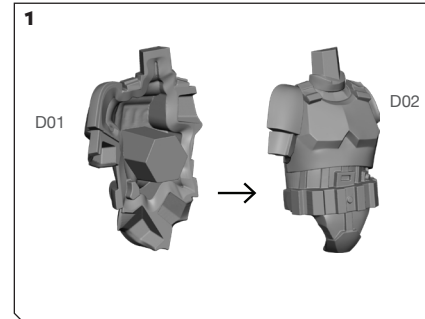
STORMTROOPER

SWQ 1 1 ASSEMBLY (C)



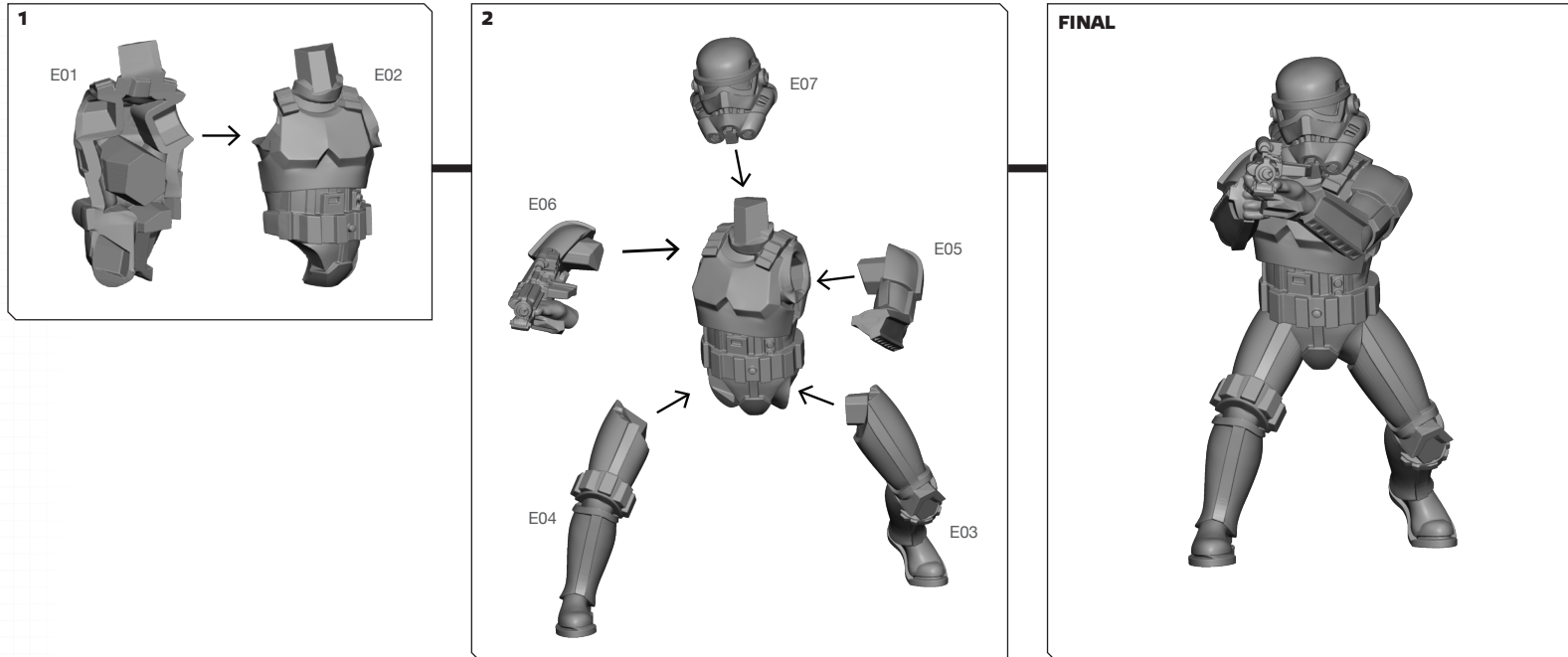
STORMTROOPER

SWQ 1 1 ASSEMBLY (D)



STORMTROOPER

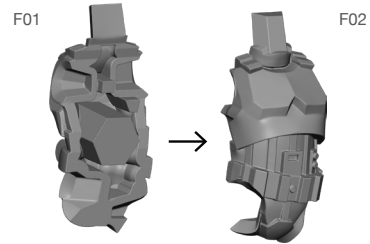
SWQ 1 1 ASSEMBLY (E)



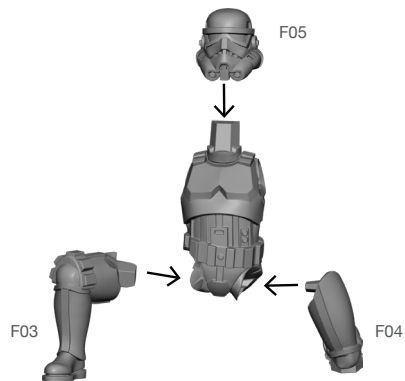
STORMTROOPER HEAVY X2

SWQ 1 1 ASSEMBLY (F)

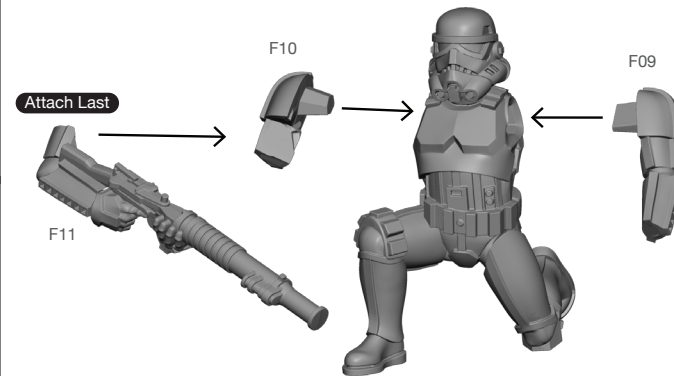
1



2



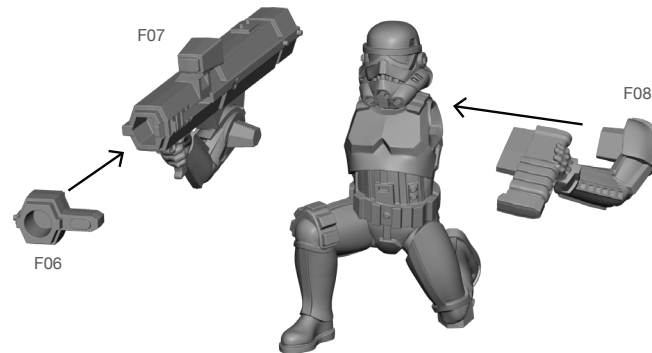
3B



B FINAL



3A



A FINAL



© LFL © AMG

All parts should be assembled using plastic glue. Permission granted to print or photocopy for personal use.