

STAR WARS

LEGION

SWL119 THE BAD BATCH (A) HUNTER ASSEMBLY

READ THIS FIRST

Be sure to use a pair of sharp hobby clippers to remove the miniature components from the frame. Carefully clean the excess material and mold lines with a sharp hobby knife. Check the fit of each part before gluing. Use a small amount of hobby plastic glue to assemble the components. Use caution with all products and follow all manufacturer instructions. Adult supervision is recommended for children under the age of 16. Have fun!

JOIN THE COMMUNITY

Use #MyStarWarsLegion to share your miniature photos and be a part of the *Star Wars: Legion* community!



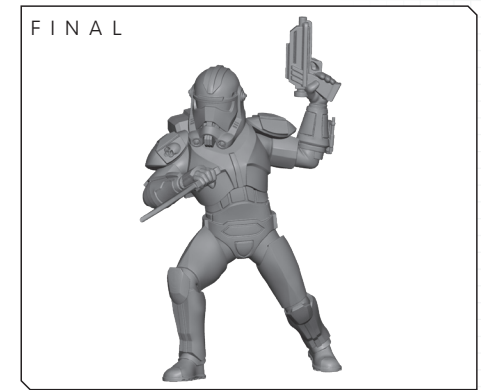
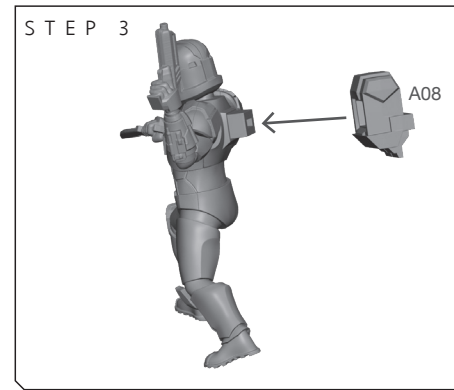
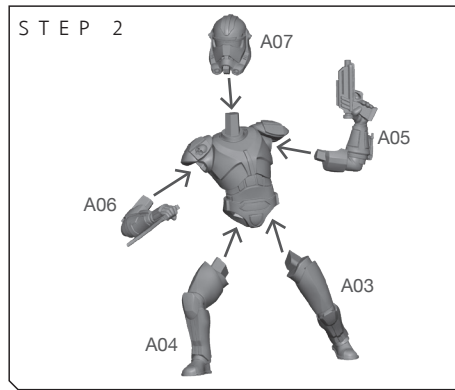
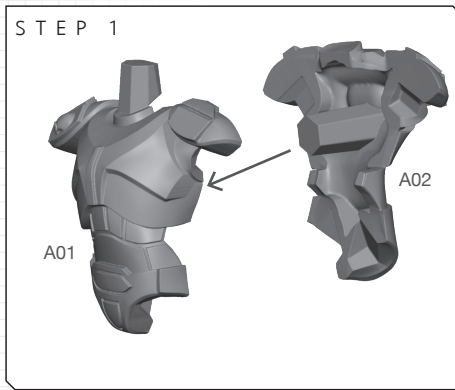
AtomicMassGames



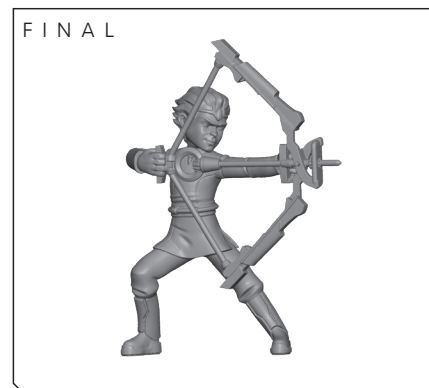
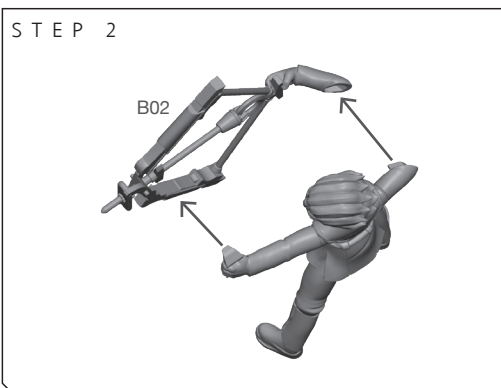
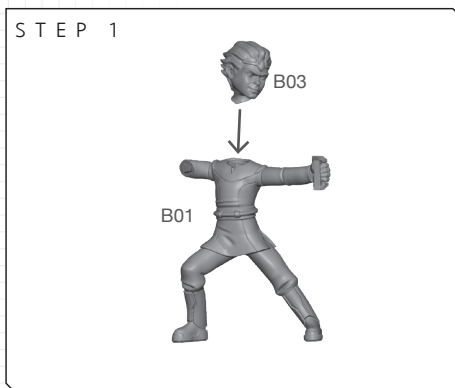
AtomicMassGames



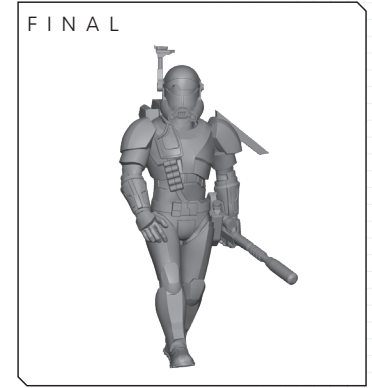
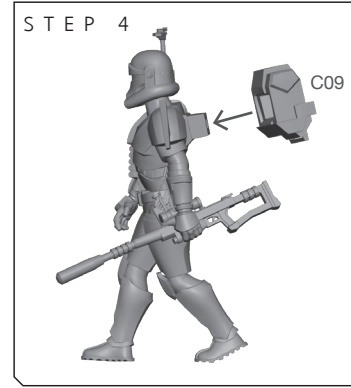
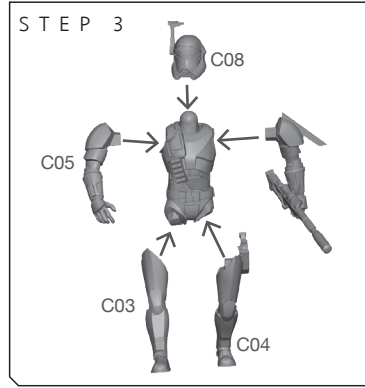
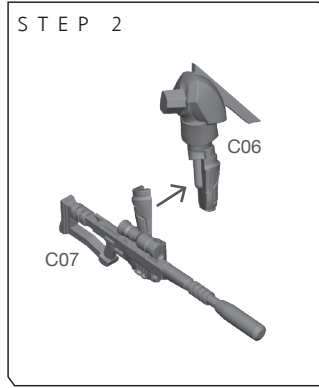
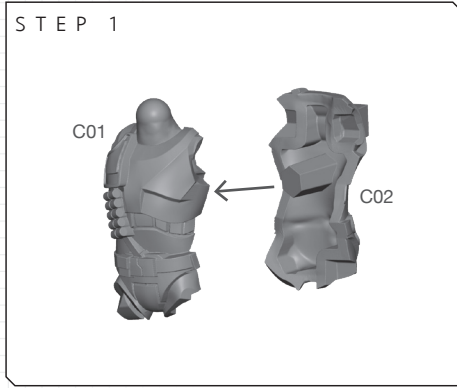
Atomic_Mass_Transmissions



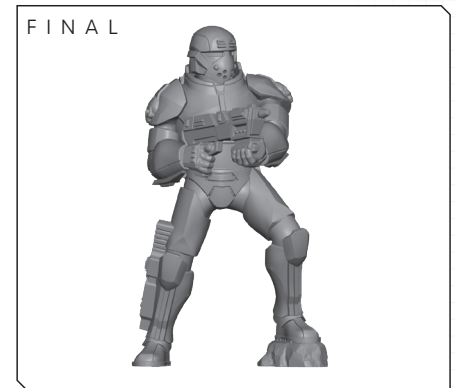
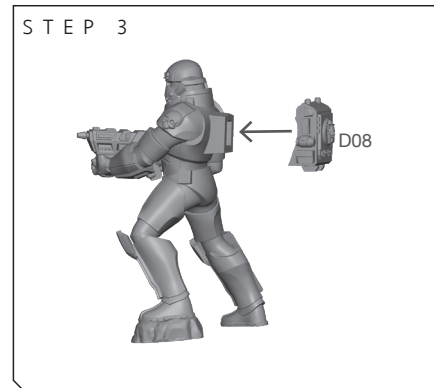
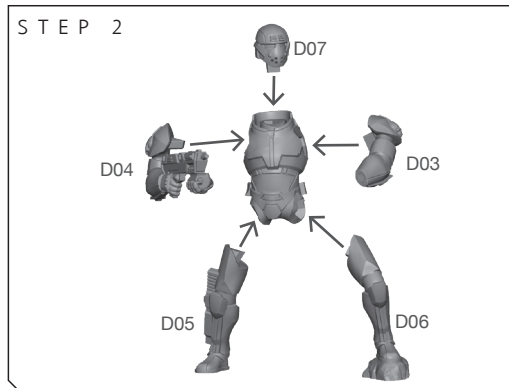
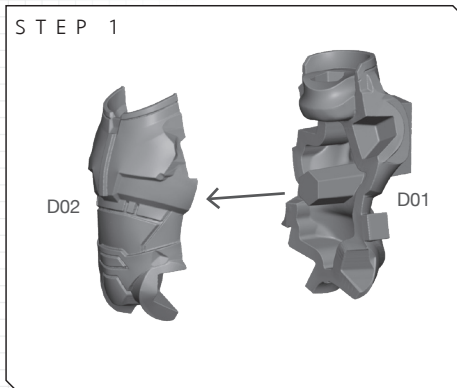
SWL119 THE BAD BATCH (B) OMEGA ASSEMBLY



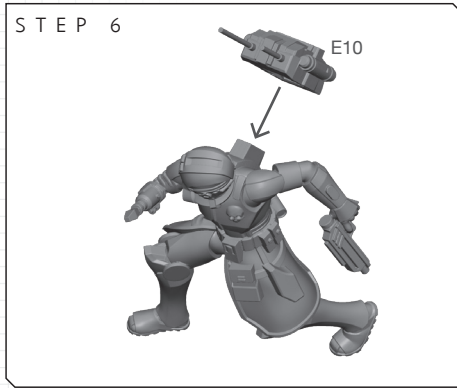
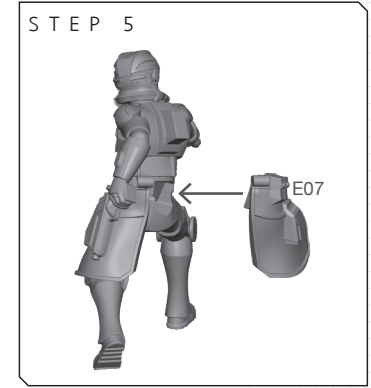
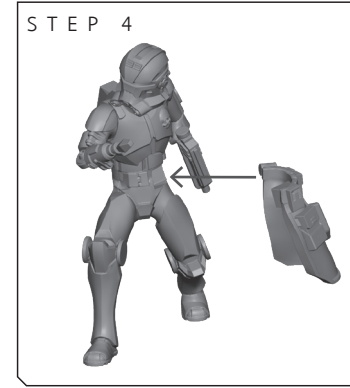
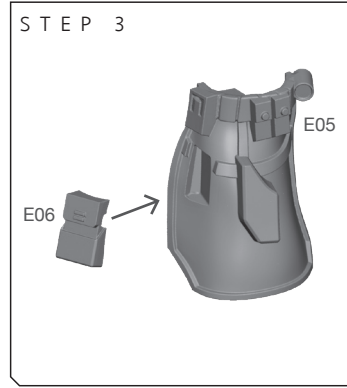
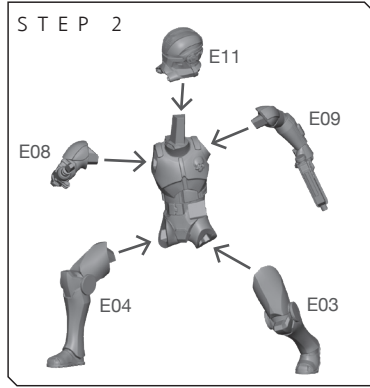
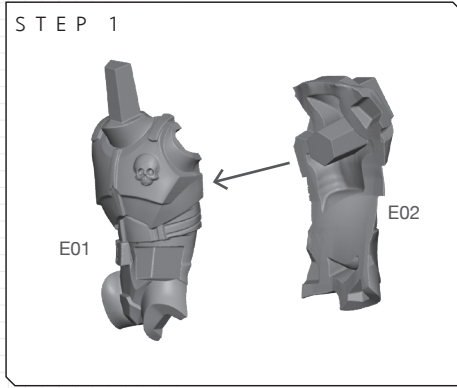
SWL119 THE BAD BATCH
(C) CROSSHAIR
ASSEMBLY



SWL119 THE BAD BATCH
(D) WRECKER
ASSEMBLY



SWL119 THE BAD BATCH (E) ECHO ASSEMBLY



SWL119 THE BAD BATCH

(F) TECH

ASSEMBLY

