

MARVEL CRISIS PROTOCOL

MINIATURES GAME

CP 143

READ THIS FIRST

Be sure to use a pair of sharp hobby clippers to remove the miniature components from the sprue. Carefully clean the excess material and mold lines with a sharp hobby knife. Check the fit of each part before gluing. Use a small amount of hobby plastic glue to assemble the components. Use caution with all products and follow all manufacturer instructions. Adult supervision is recommended for children under the age of 16. Have fun!

JOIN THE COMMUNITY

Use #PaintingProtocol to share your miniature photos and be a part of the Marvel: Crisis Protocol community!



AtomicMassGames



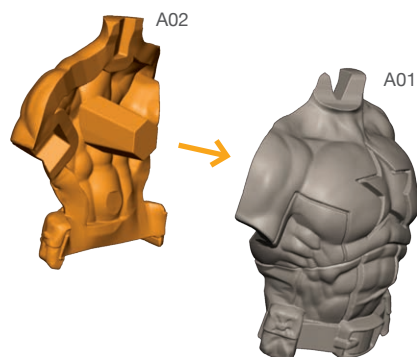
AtomicMassGames



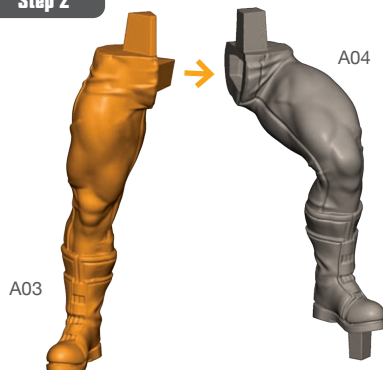
Atomic_Mass_Transmissions

CAPTAIN AMERICA ASSEMBLY GUIDE

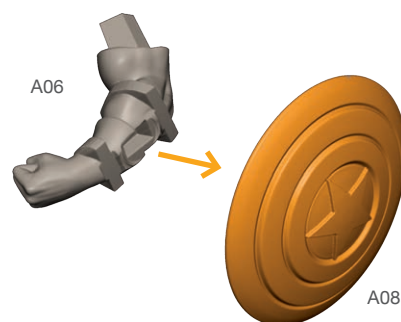
Step 1



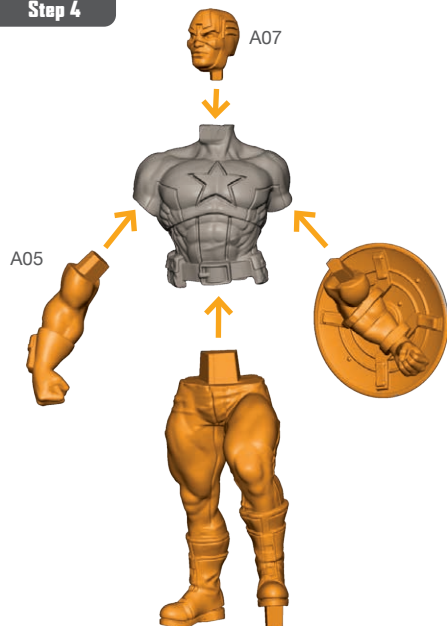
Step 2



Step 3



Step 4



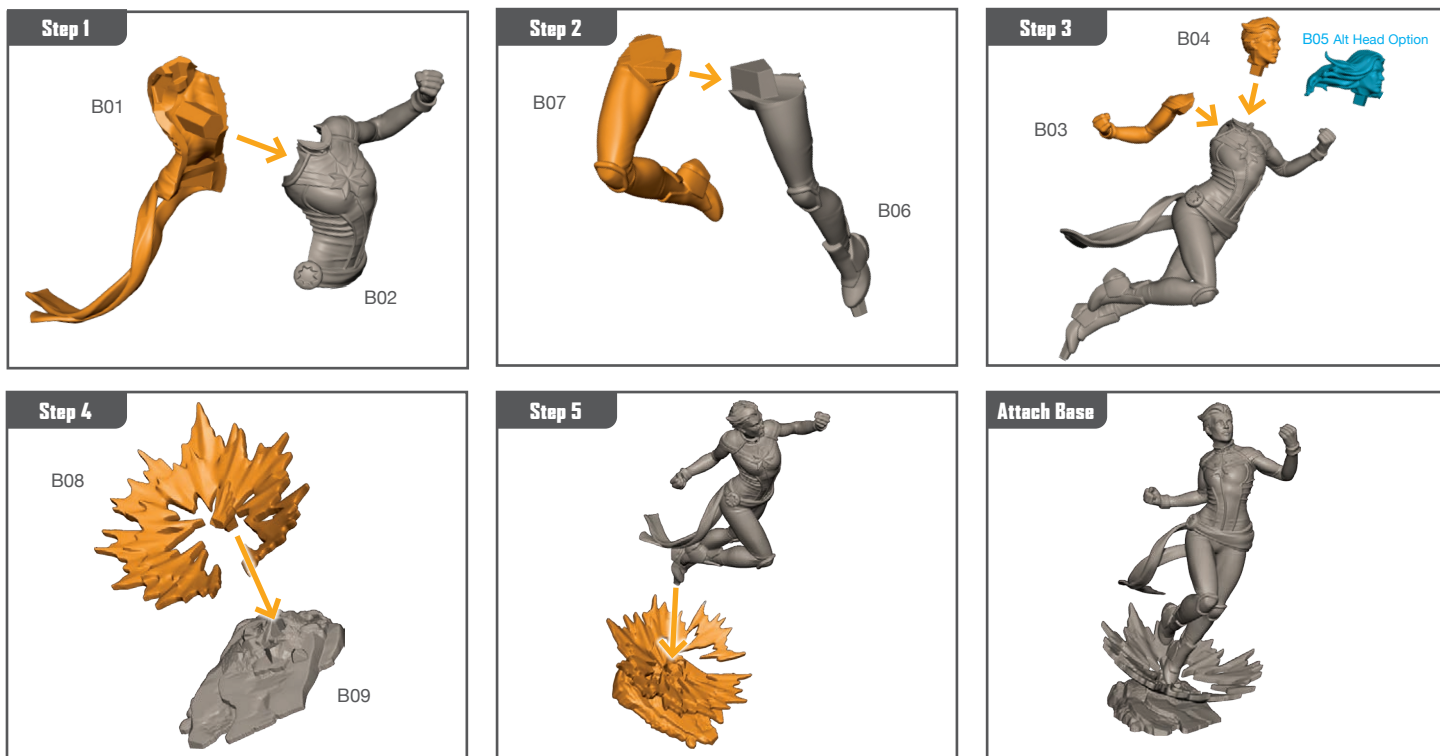
Step 5



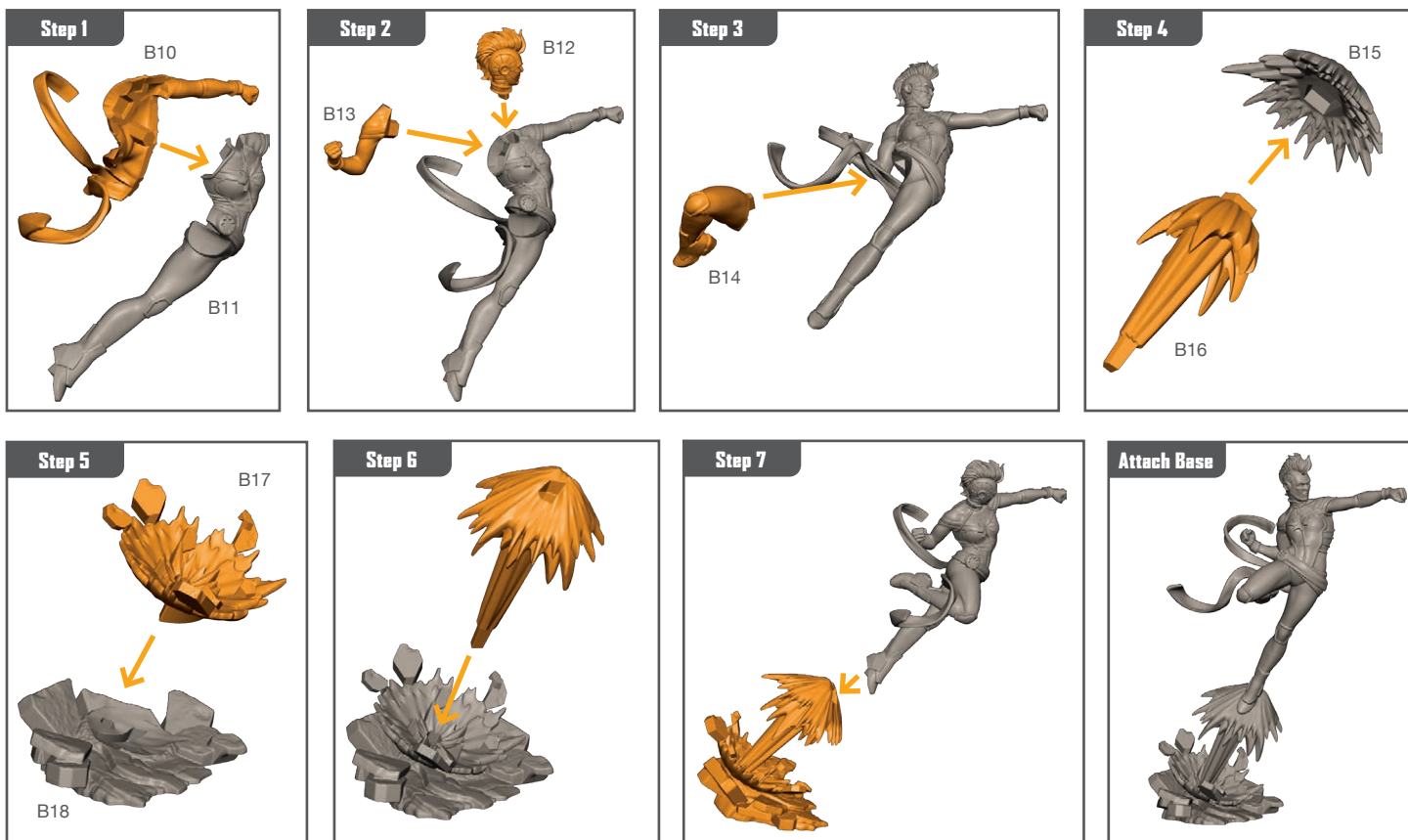
Attach Base



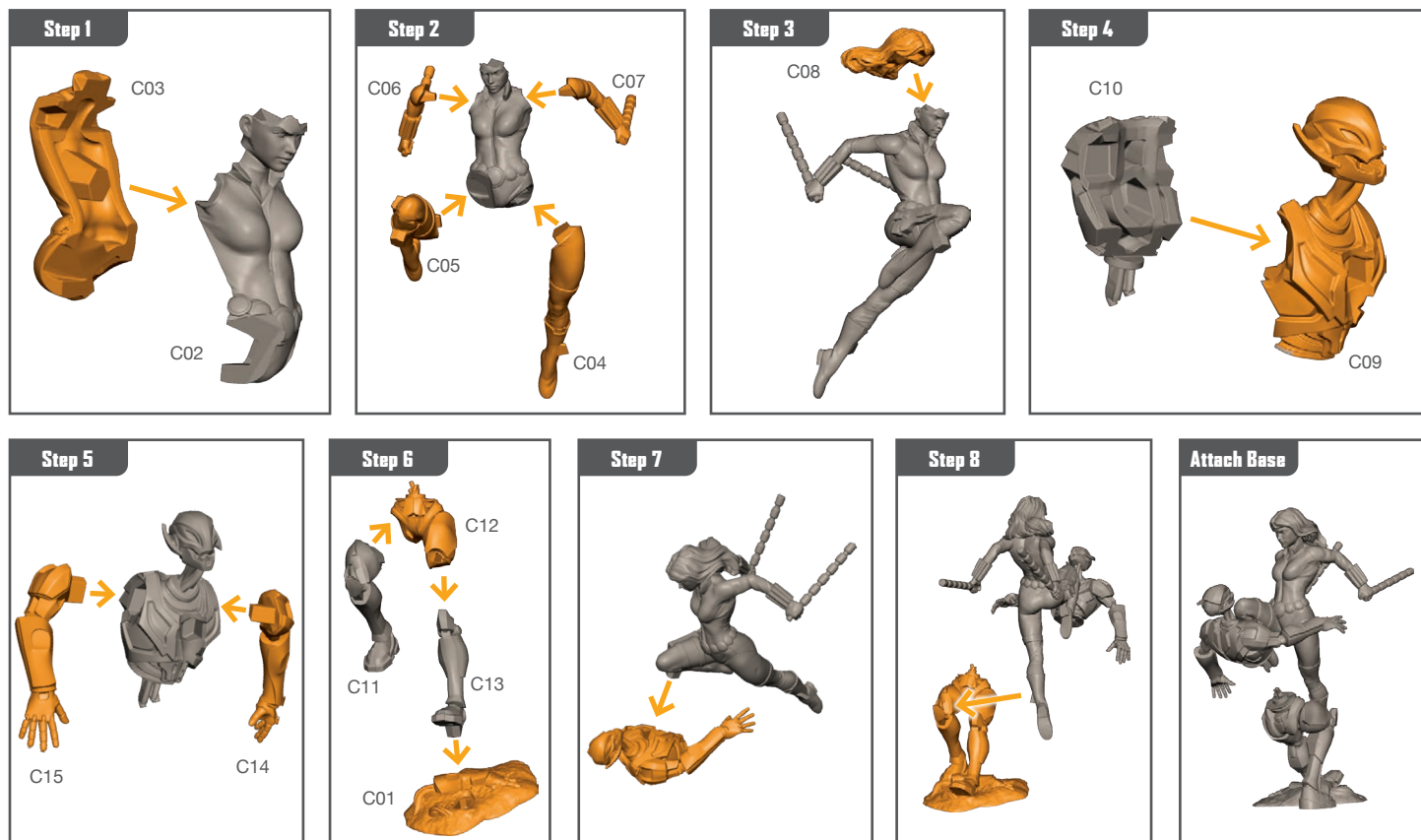
CAPTAIN MARVEL ASSEMBLY GUIDE



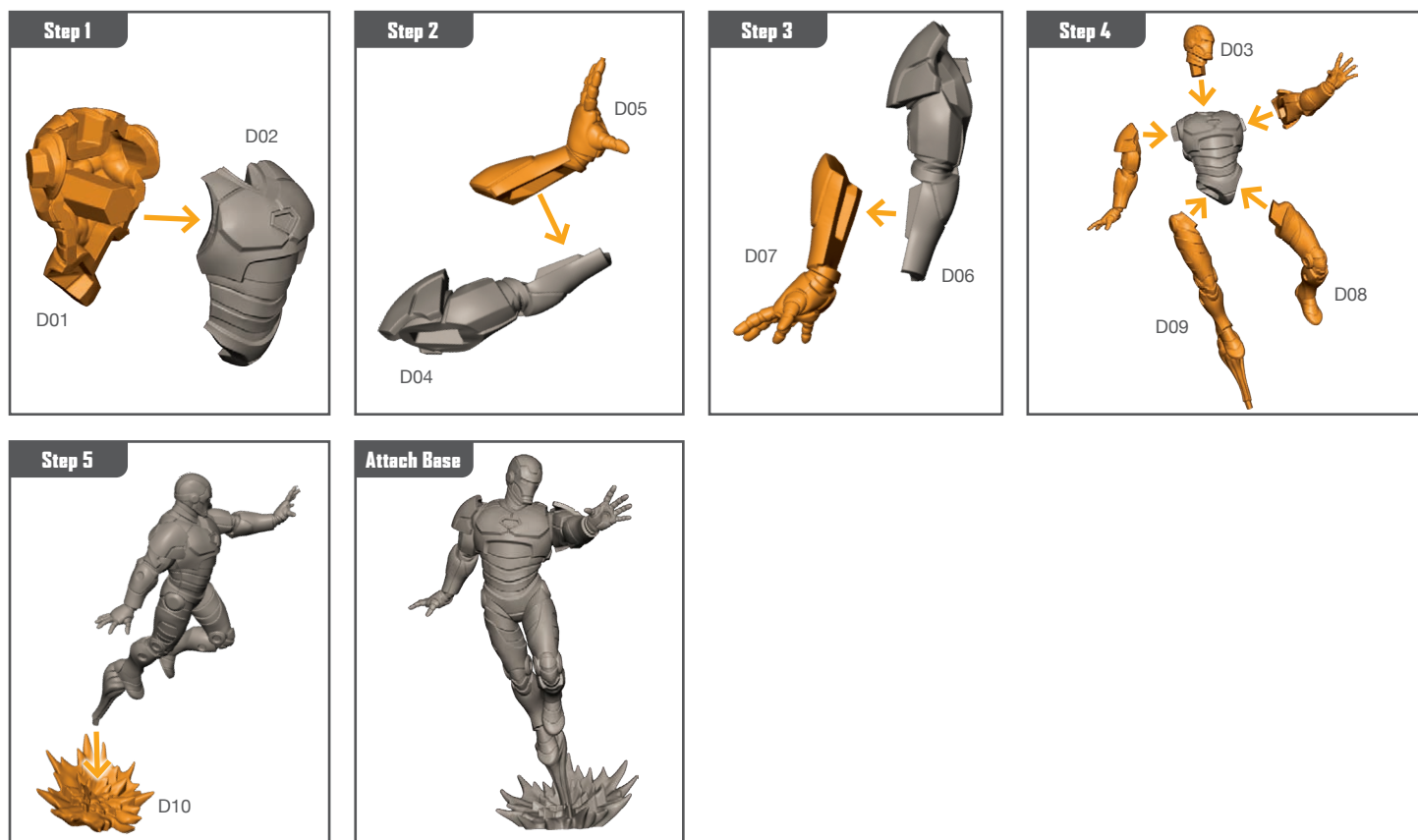
CAPTAIN MARVEL BINARY FORM ASSEMBLY GUIDE



BLACK WIDOW ASSEMBLY GUIDE



IRON MAN ASSEMBLY GUIDE



SPIDER-MAN ASSEMBLY GUIDE

Step 1

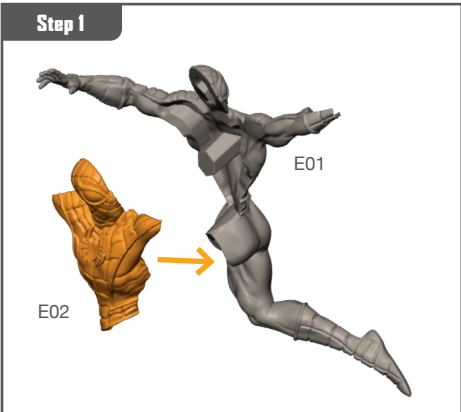


Diagram showing the assembly of the Spider-Man torso. Part E02 (orange) is attached to the back of the torso (E01).

Step 2

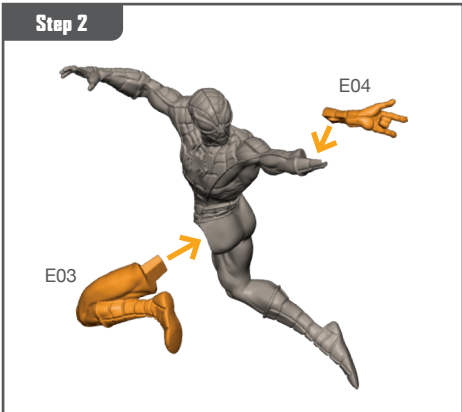


Diagram showing the assembly of the Spider-Man arms and legs. Part E04 (orange) is attached to the right arm, and part E03 (orange) is attached to the left leg.

Step 3

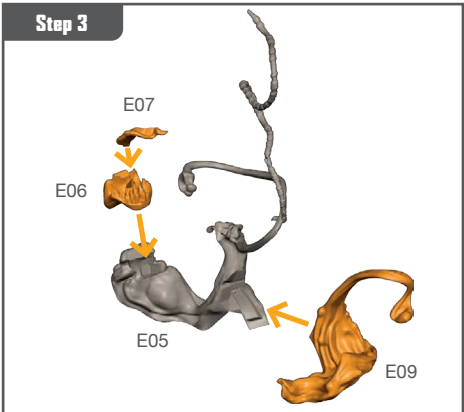


Diagram showing the assembly of the Spider-Man web. Part E07 (orange) is attached to the right arm, and part E09 (orange) is attached to the left leg. Part E06 (orange) is attached to the web.

Step 4

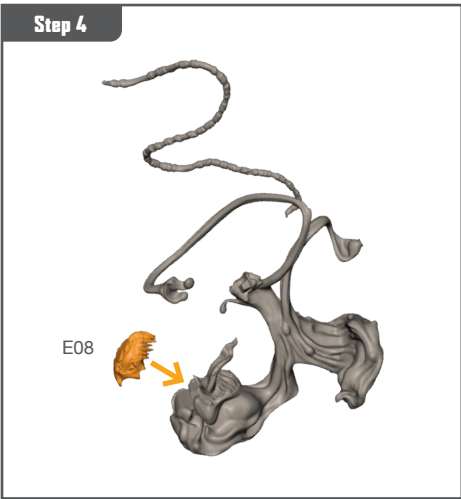


Diagram showing the assembly of the Spider-Man head. Part E08 (orange) is attached to the head.

Step 5

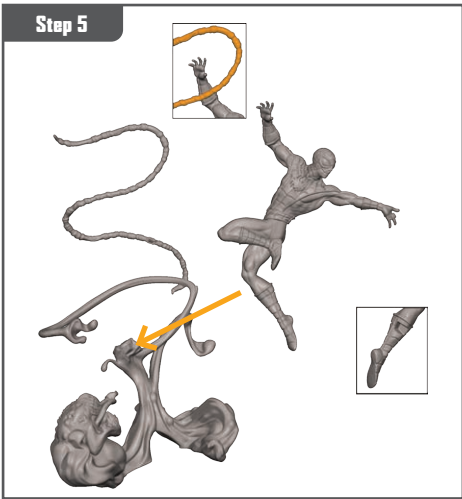


Diagram showing the final assembly of the Spider-Man figure. The figure is shown in a dynamic pose, with the web (E07) and the head (E08) attached.

Attach Base

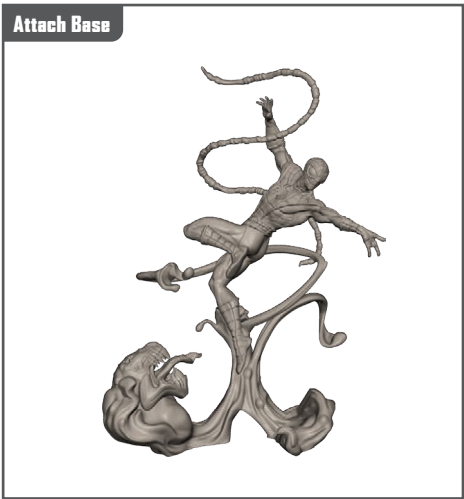


Diagram showing the Spider-Man figure attached to the base.

WINTER SOLDIER ASSEMBLY GUIDE

Step 1

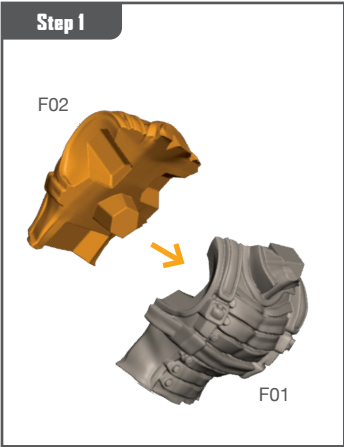


Diagram showing the assembly of the Winter Soldier head. Part F02 (orange) is attached to the head (F01).

Step 2

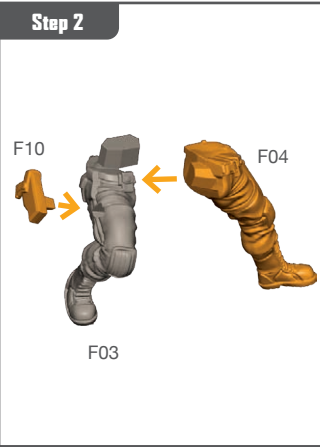


Diagram showing the assembly of the Winter Soldier arms and legs. Part F10 (orange) is attached to the right arm, and part F04 (orange) is attached to the left leg. Part F03 (grey) is attached to the torso.

Step 3

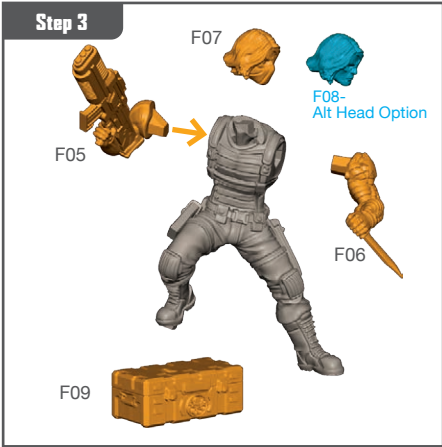


Diagram showing the assembly of the Winter Soldier torso. Part F05 (orange) is attached to the torso, and part F06 (orange) is attached to the right arm. Part F07 (orange) is attached to the head, and part F08 (blue) is an alternative head option. Part F09 (orange) is attached to the base.

Attach Base


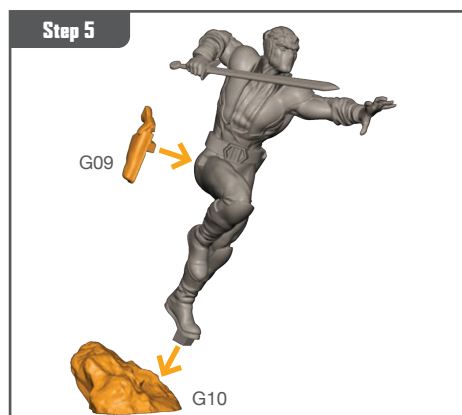
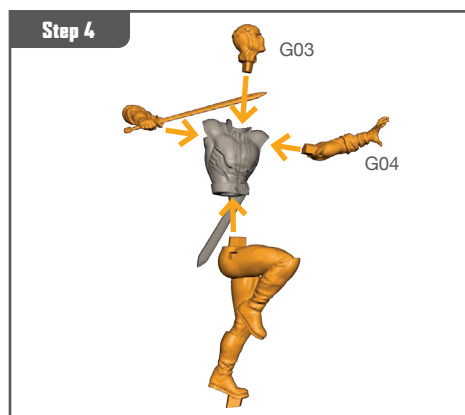
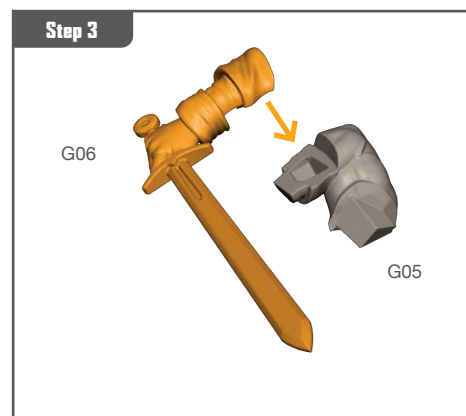
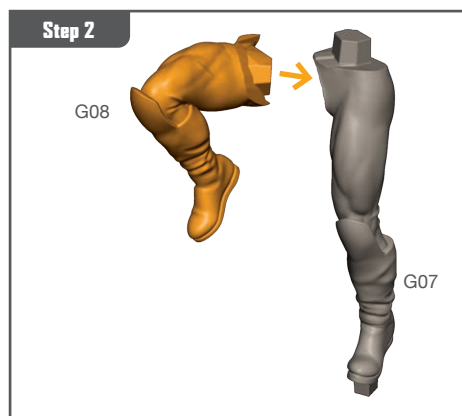
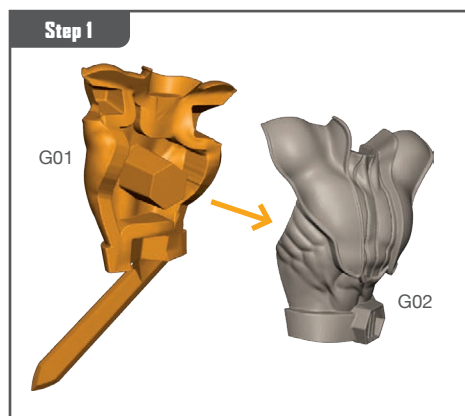
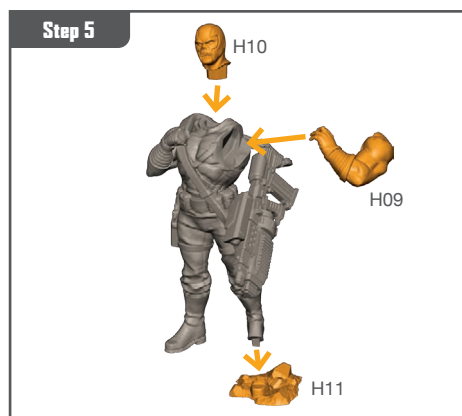
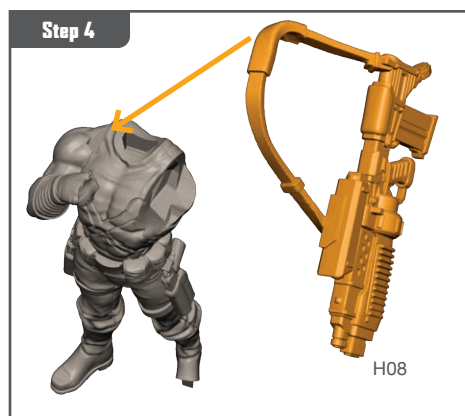
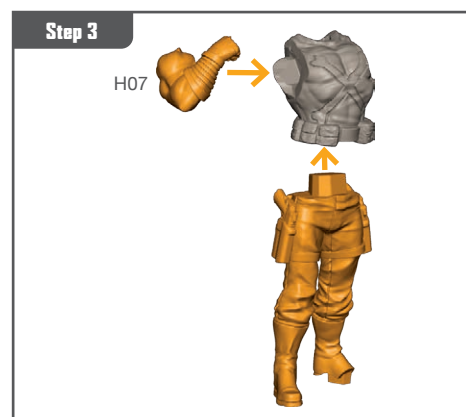
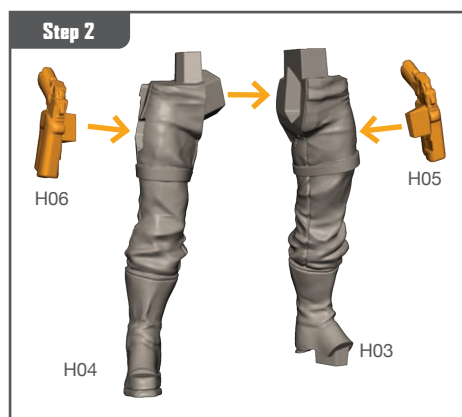
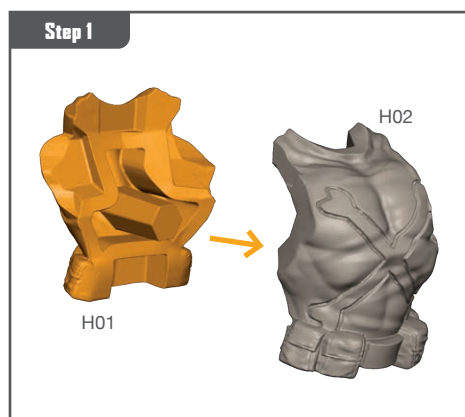


Diagram showing the Winter Soldier figure attached to the base.

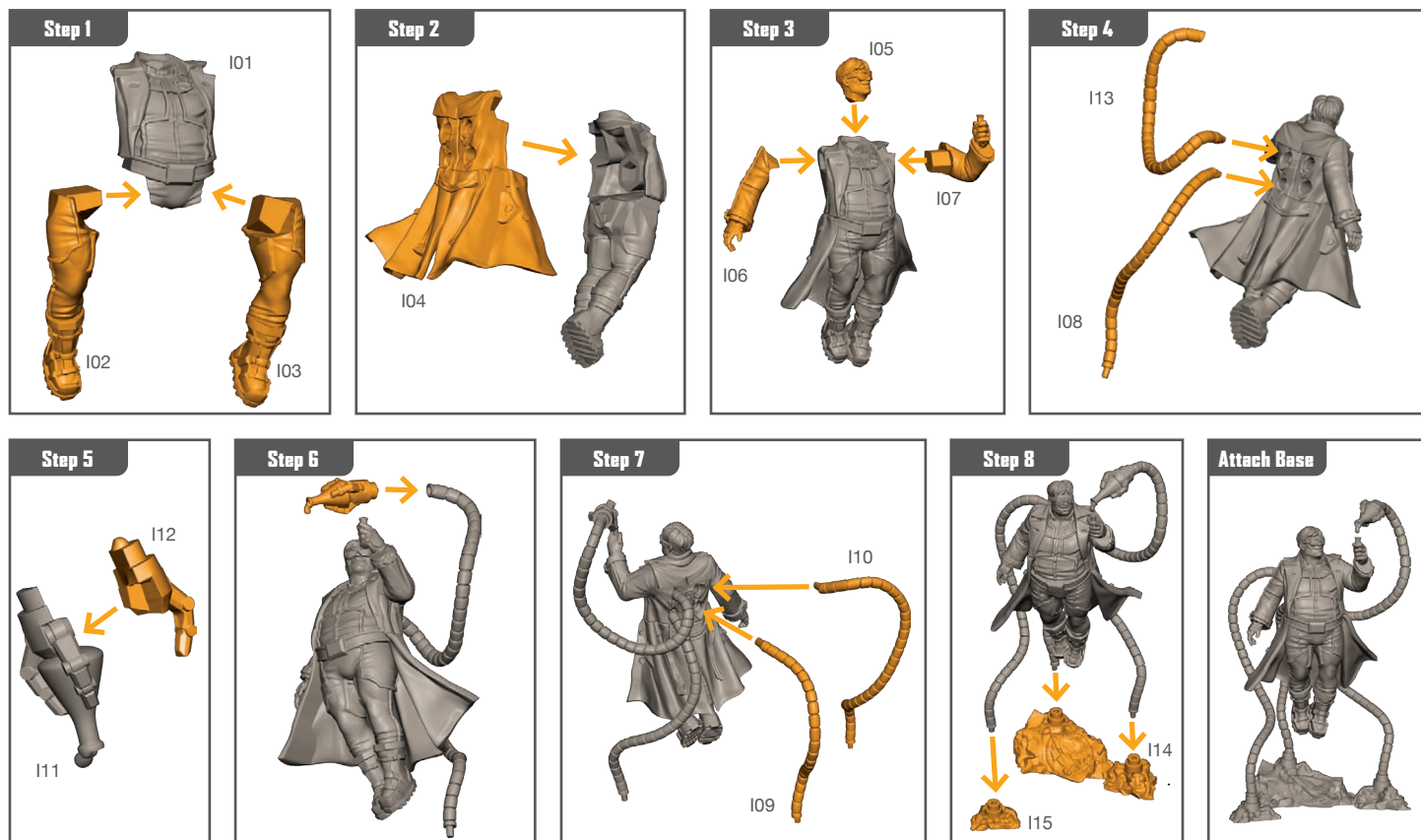
BARON ZEMO ASSEMBLY GUIDE



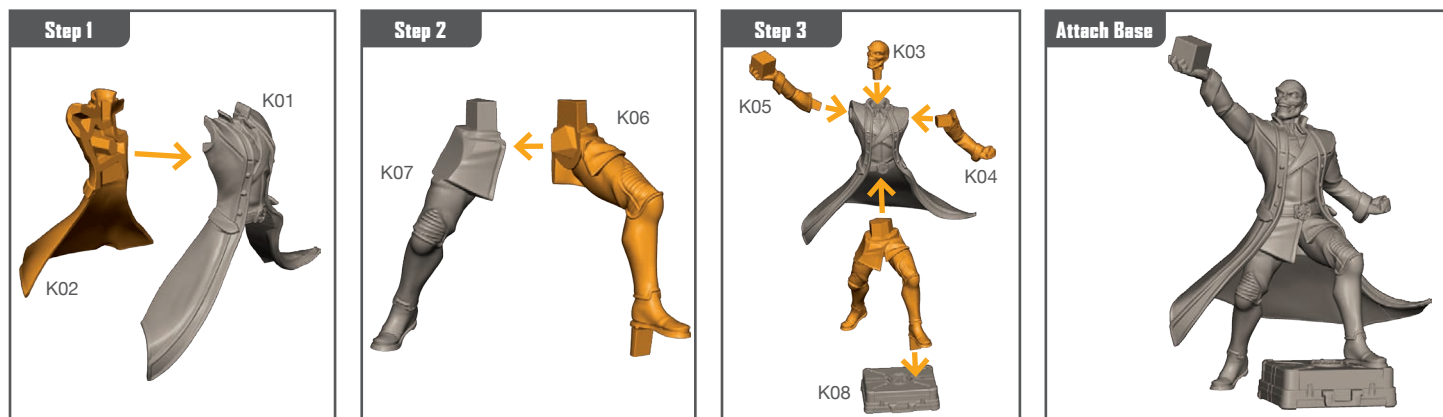
CROSSBONES ASSEMBLY GUIDE



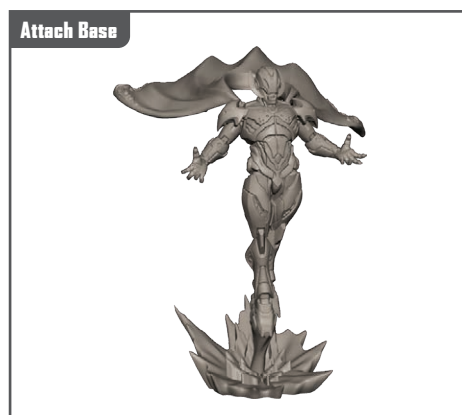
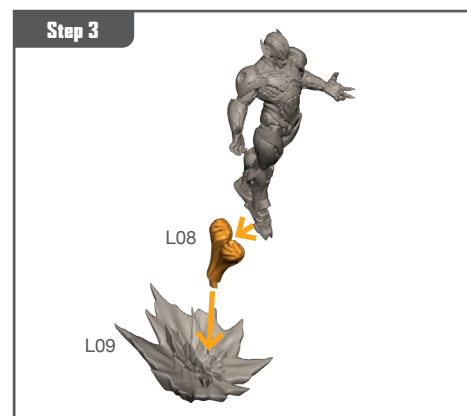
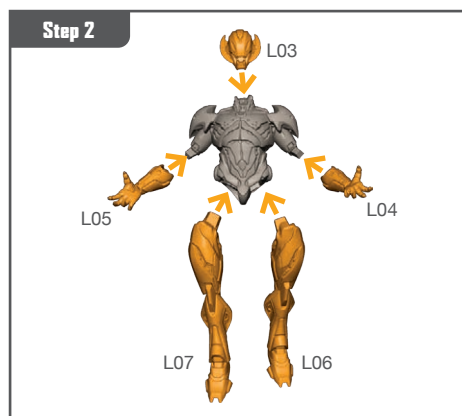
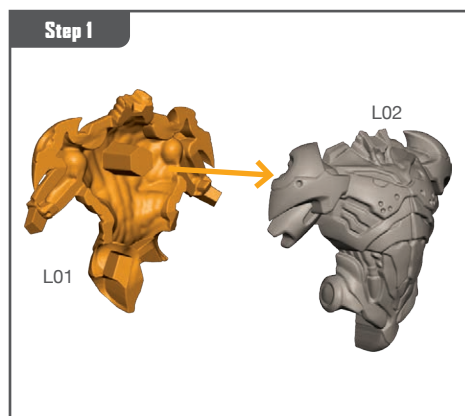
DOC OCK ASSEMBLY GUIDE



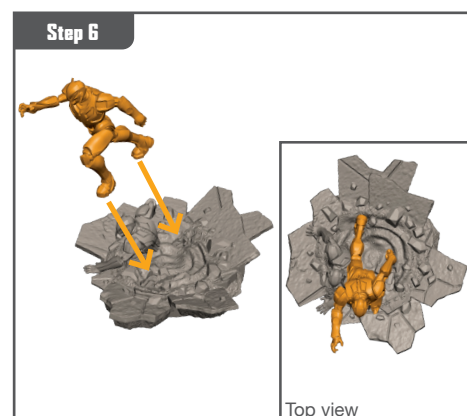
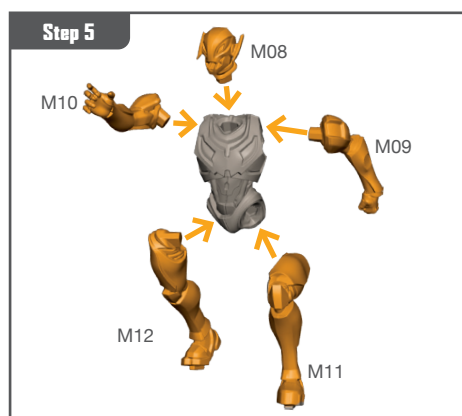
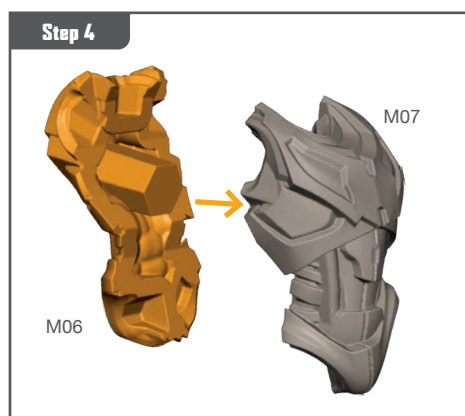
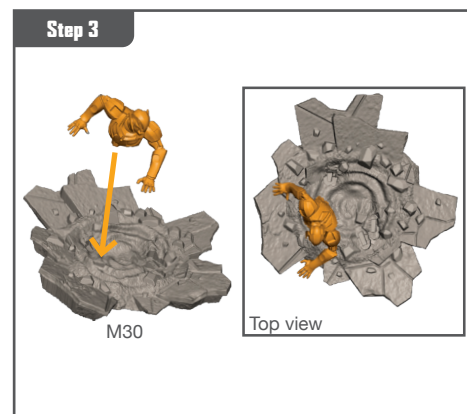
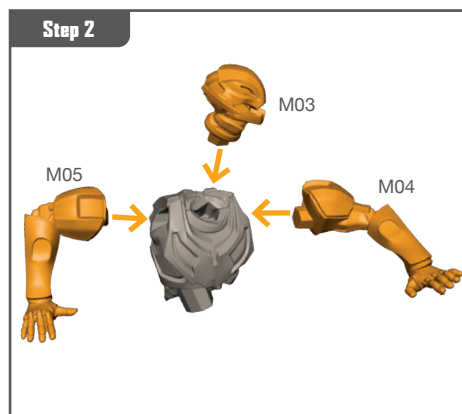
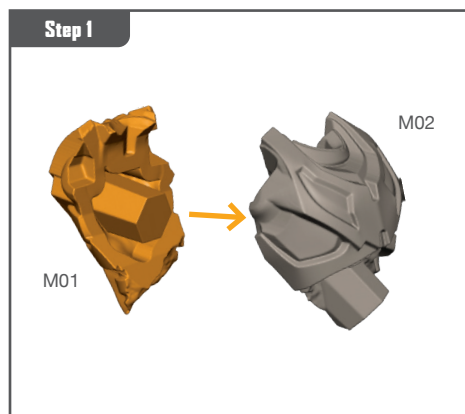
RED SKULL ASSEMBLY GUIDE



ULTRON ASSEMBLY GUIDE

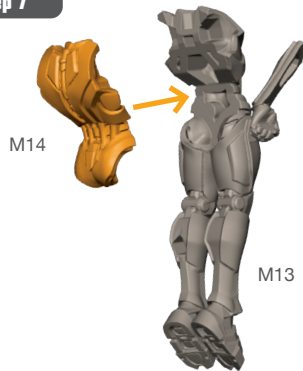


ULTRON BOTS ASSEMBLY GUIDE

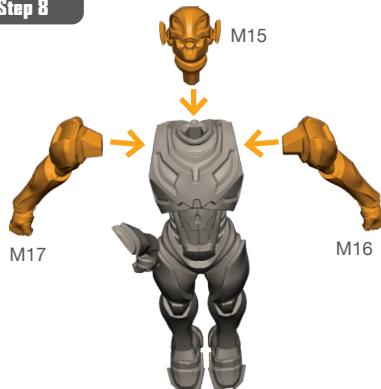


ULTRON BOTS ASSEMBLY GUIDE (CONTINUED)

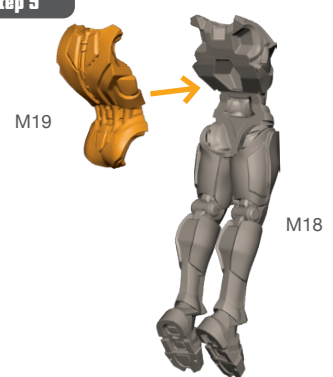
Step 7



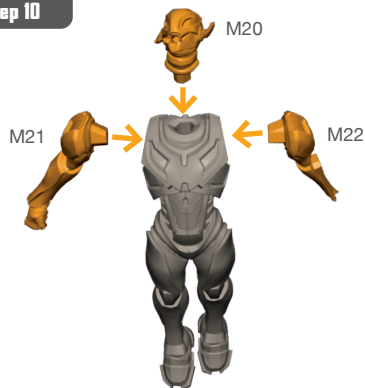
Step 8



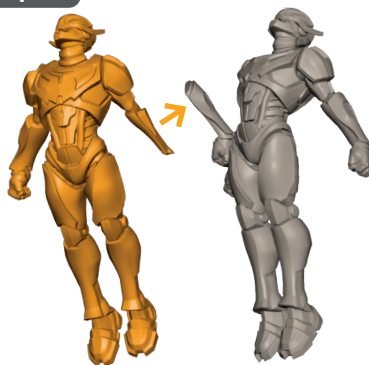
Step 9



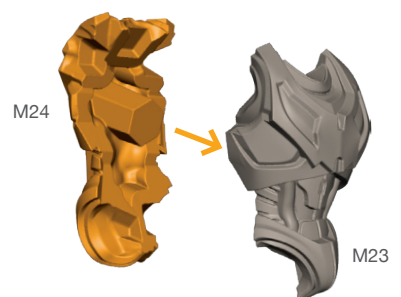
Step 10



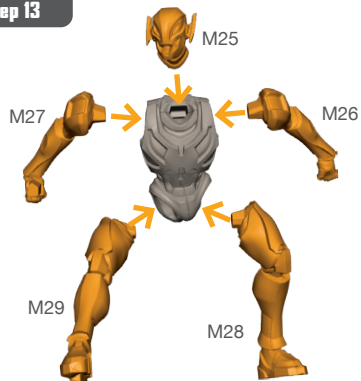
Step 11



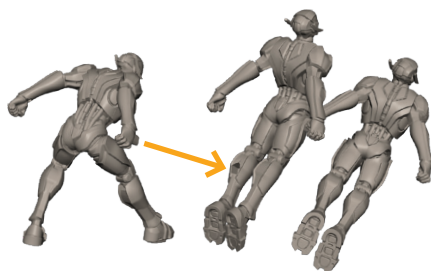
Step 12



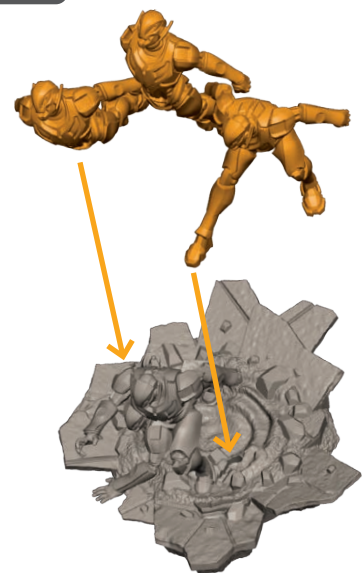
Step 13



Step 14



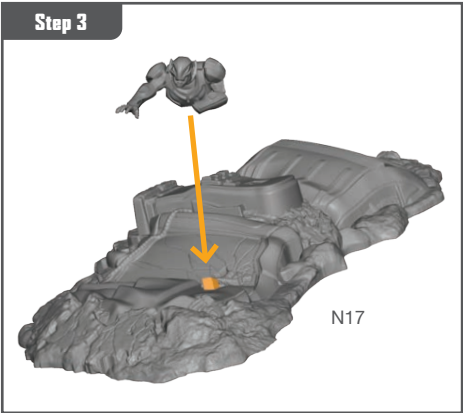
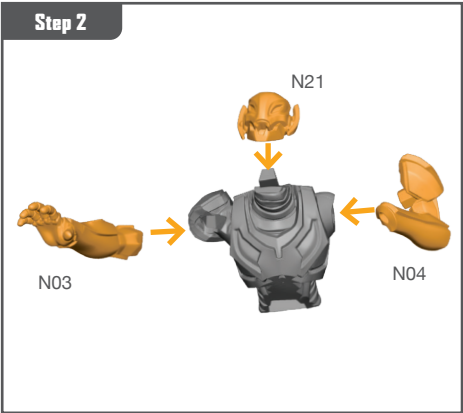
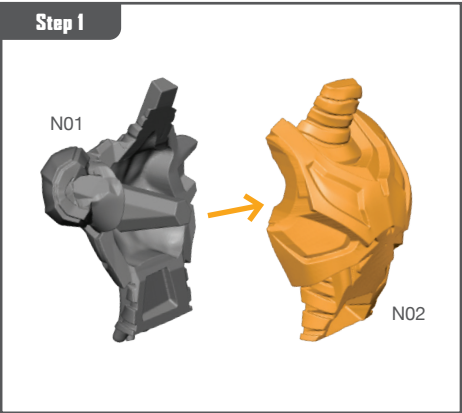
Step 15



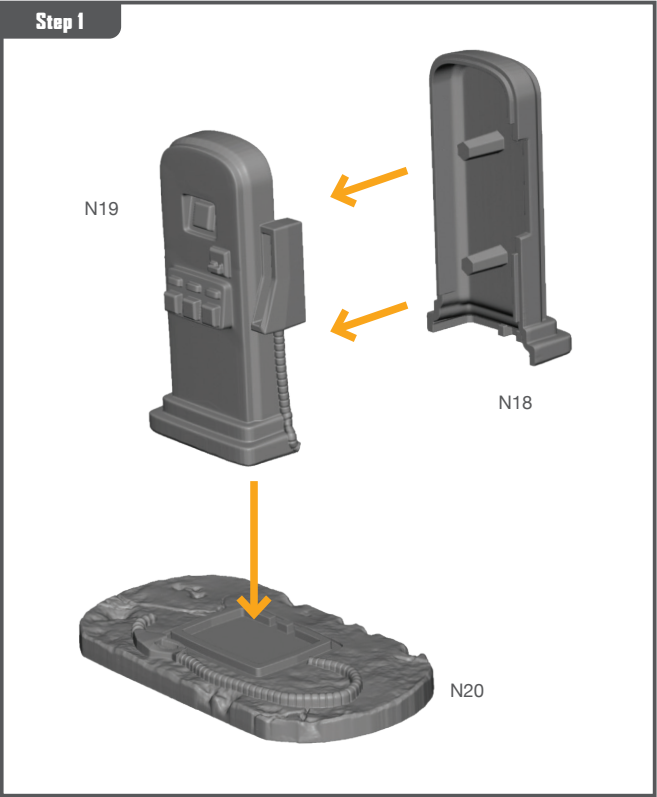
Attach Base



CRUSHED CAR ASSEMBLY GUIDE

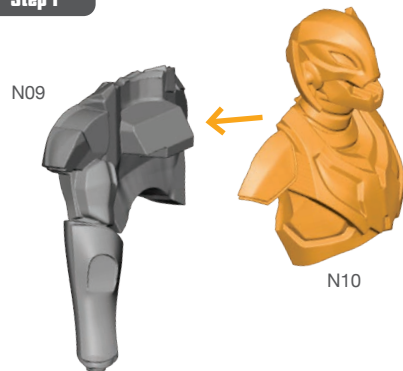


GAS PUMP ASSEMBLY GUIDE

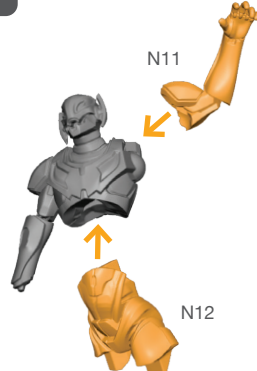


SELF SERVE ASSEMBLY GUIDE

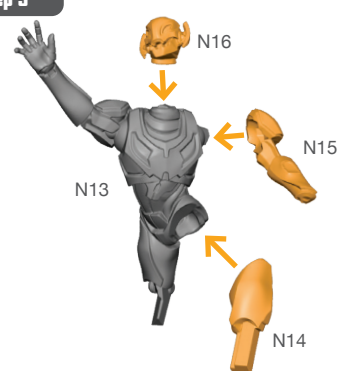
Step 1



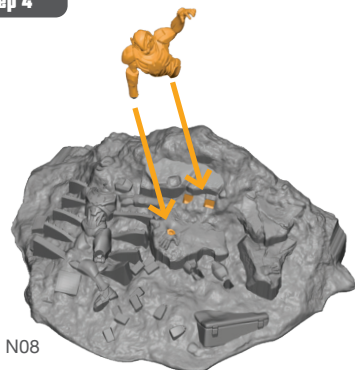
Step 2



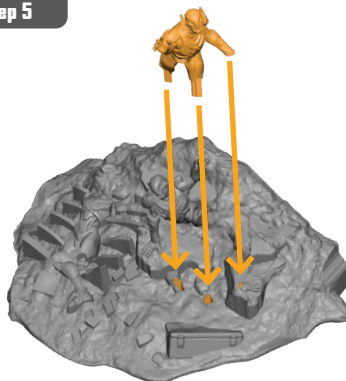
Step 3



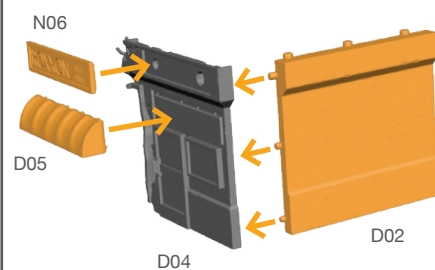
Step 4



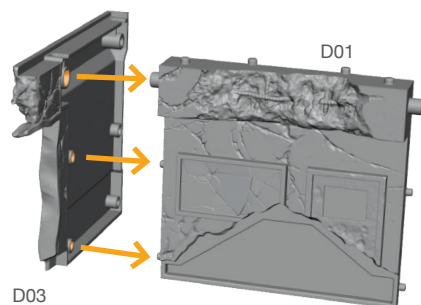
Step 5



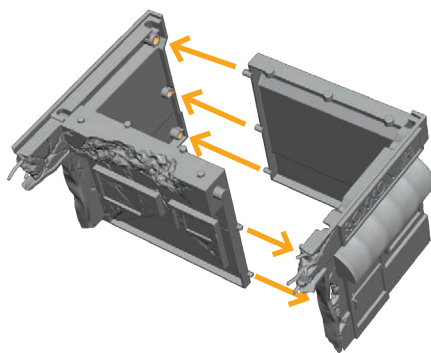
Step 6



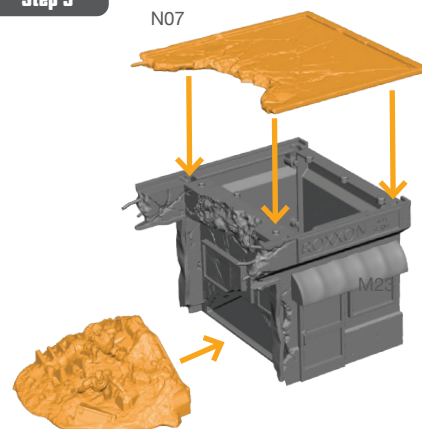
Step 7



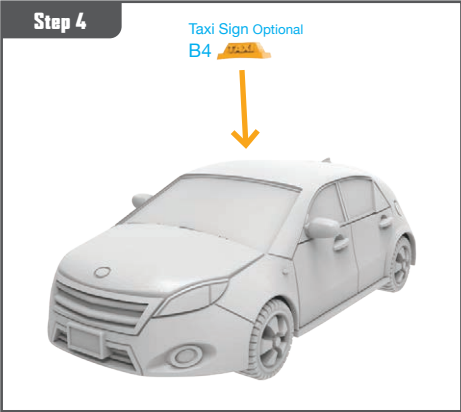
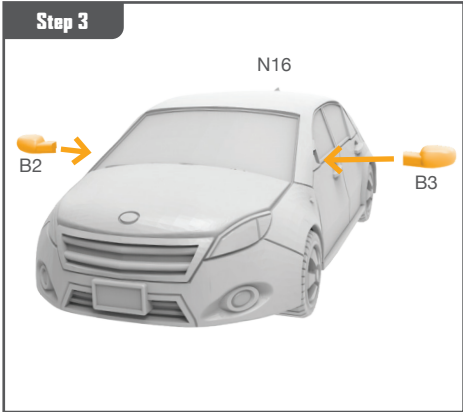
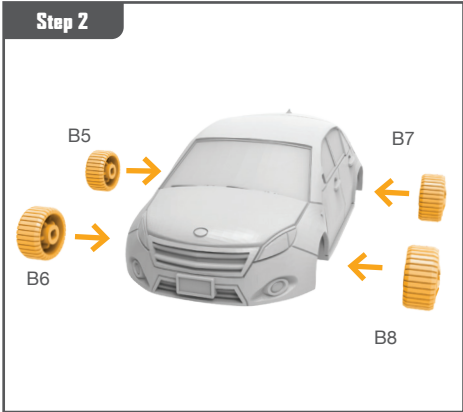
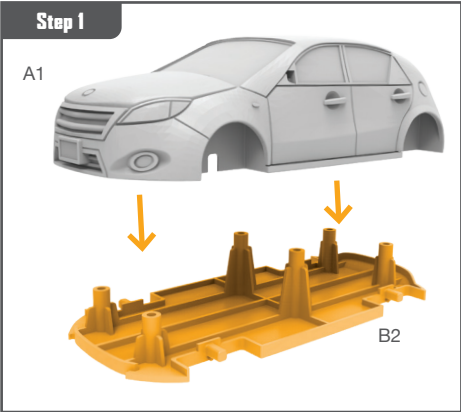
Step 8



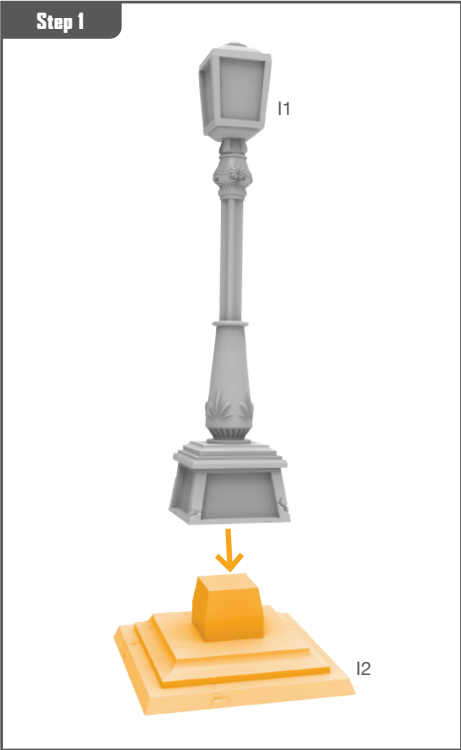
Step 9



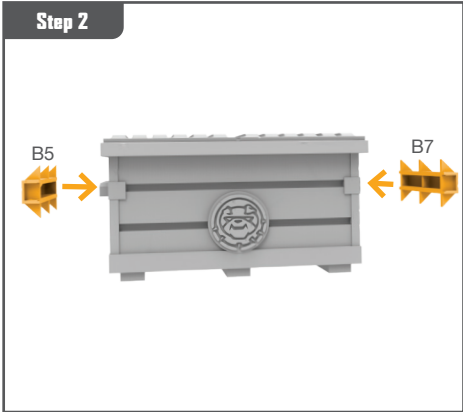
CAR ASSEMBLY GUIDE



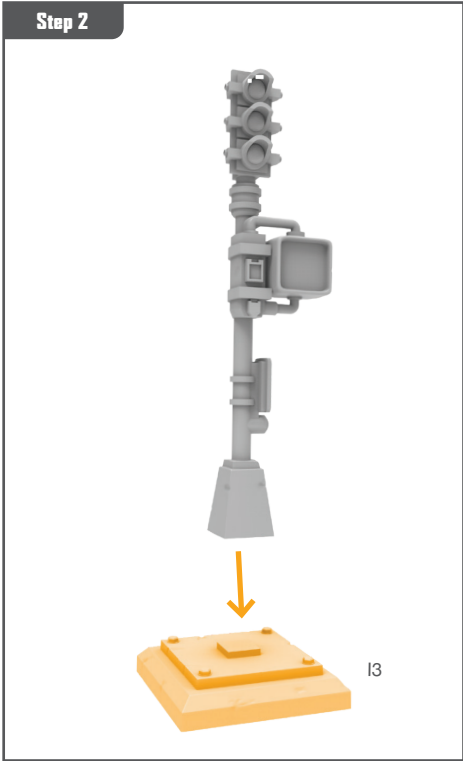
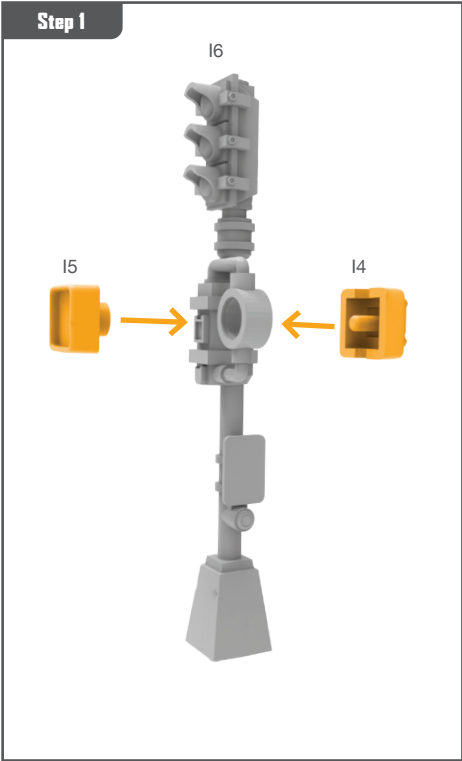
STREET LIGHT ASSEMBLY GUIDE



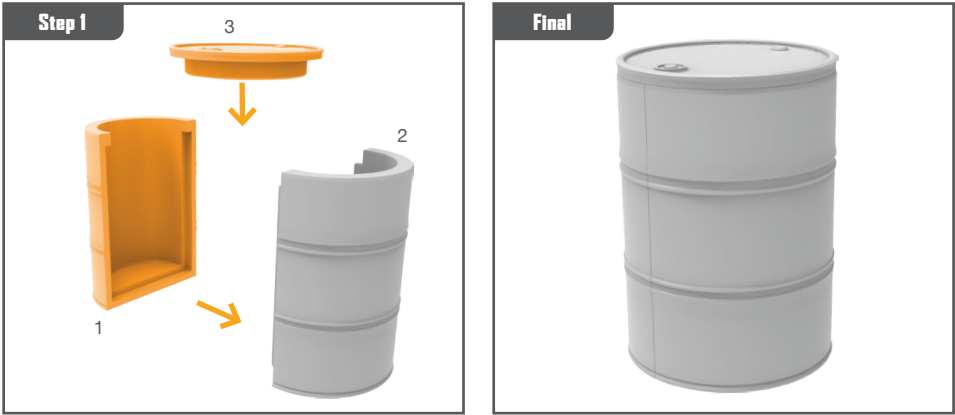
DUMPSTER ASSEMBLY GUIDE



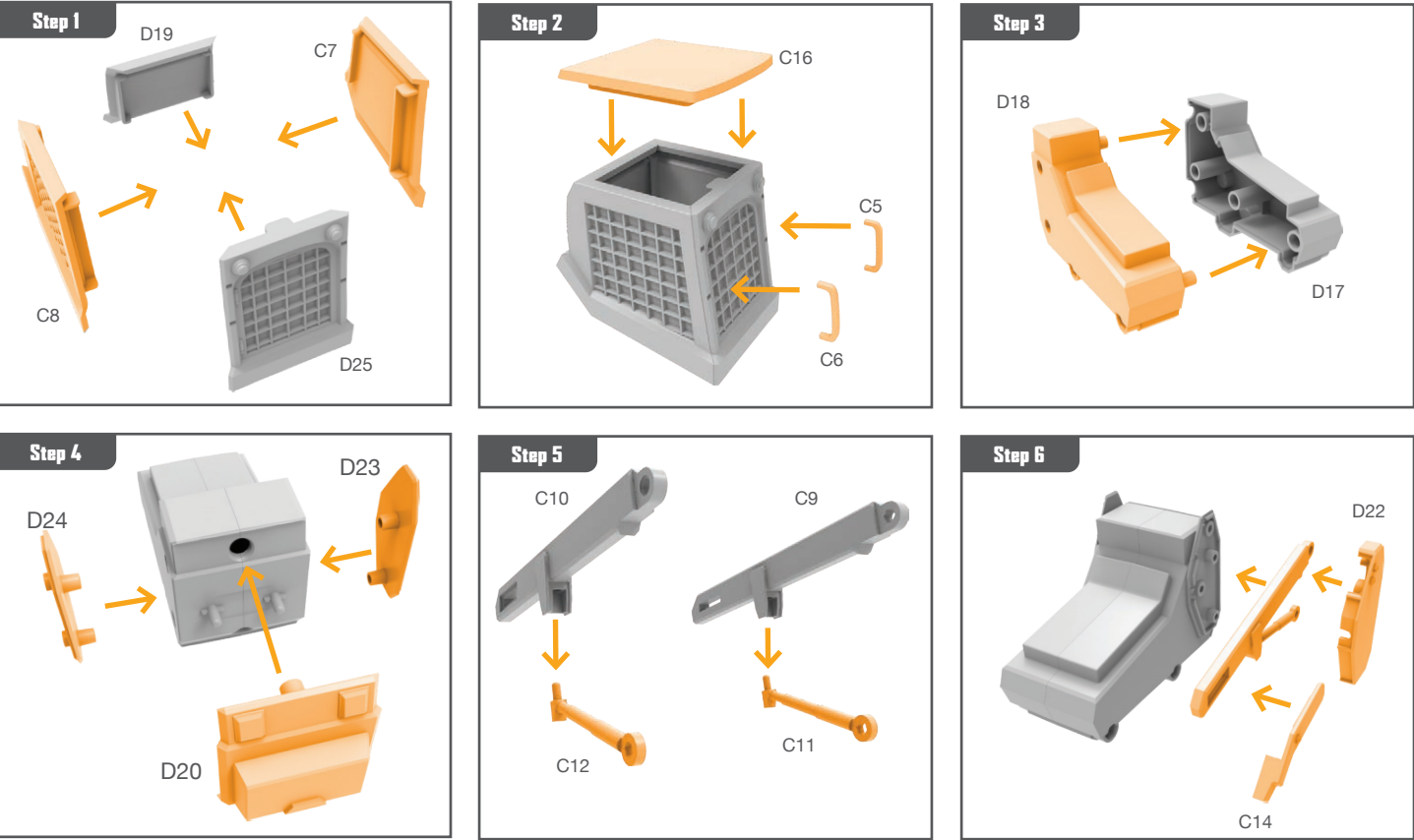
TRAFFIC LIGHT ASSEMBLY GUIDE



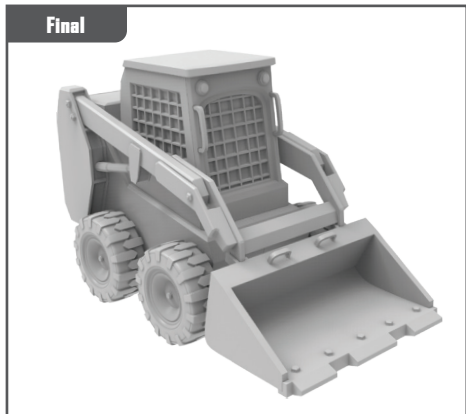
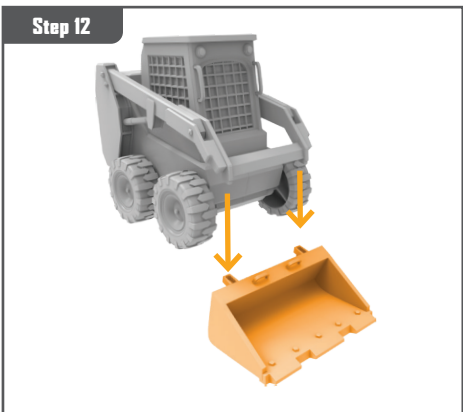
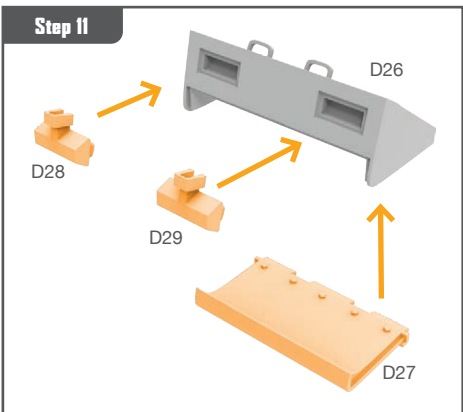
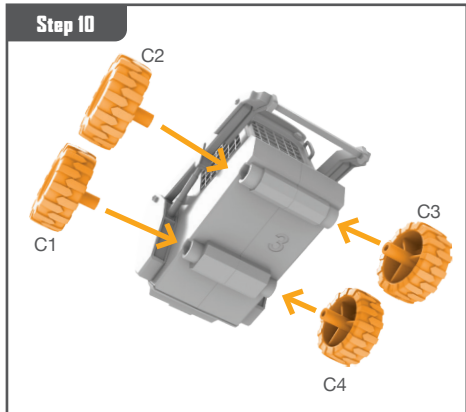
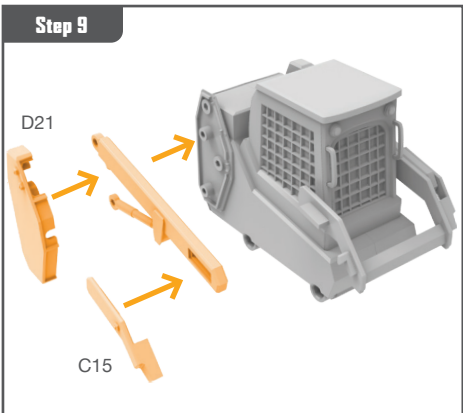
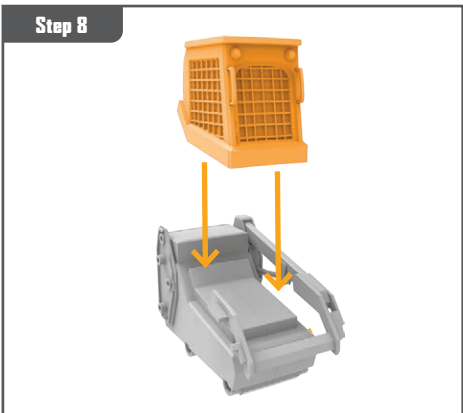
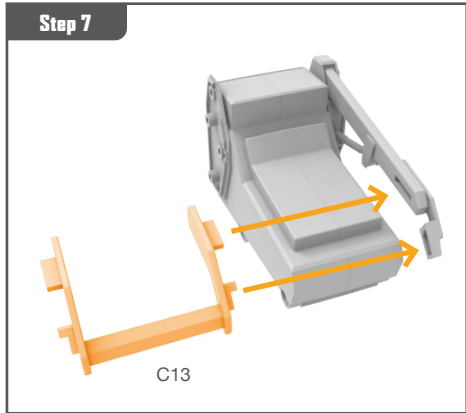
BARREL ASSEMBLY GUIDE



LOADER ASSEMBLY GUIDE



LOADER ASSEMBLY GUIDE (CONTINUED)



BARRIER ASSEMBLY GUIDE

