

MARVEL CRISIS PROTOCOL MINIATURES GAME

CP 31

READ THIS FIRST

Read through the instruction booklet before assembling your miniatures. Be sure to use a pair of sharp hobby clippers to remove the miniature components from the sprue. Carefully clean the excess material and mold lines with a sharp hobby knife. Check the fit of each part before gluing. Use a small amount of hobby plastic glue to assemble the components. Use caution with all products and follow all manufacturer instructions. Adult supervision is recommended for children under the age of 16. Have fun!

CREDITS

Marvel Crisis Protocol
Game and Character Design
 William Shick
Lead Developer
 Will Pagani
Sculpting Director
 Dallas Kemp
Digital Engineering
 Marco Segovia, Evan Kang
Sculptor
 Luke Sheridan
Miniature Painting
 Dallas Kemp

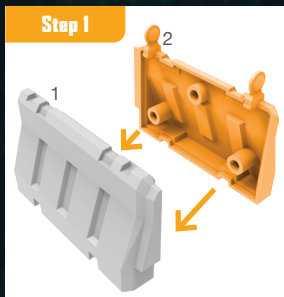
Marketing
 Josh Colón
Graphic Design & Photography
 Jessy Stetson
Editing
 Dan Henderson

Asmodee North America
Licensing Coordinators
 Sherry Anisi
 Ariel Brooks
Director of Licensing
 Simone Elliott

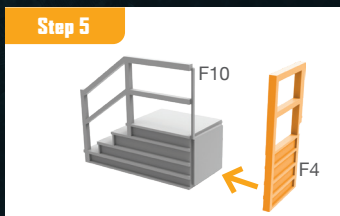
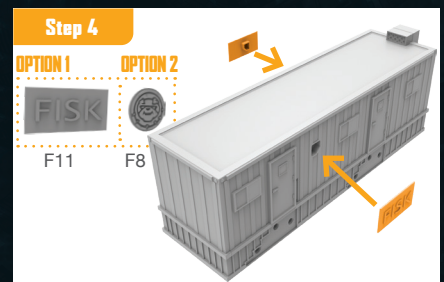
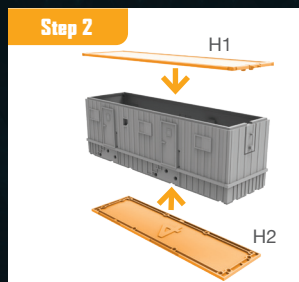
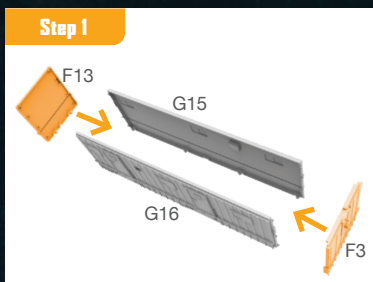
Plastics Production Management
 Justin Anger, Michael Blomberg
Print Production Management
 Liza Lundgren, John Hannasch, Anne Kinner
Publisher
 Steve Horvath

Marvel
Licensing Approvals
 Brian Ng

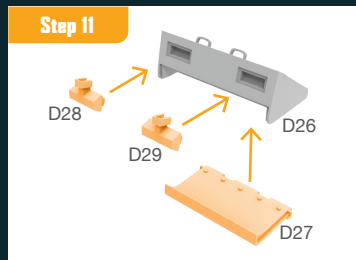
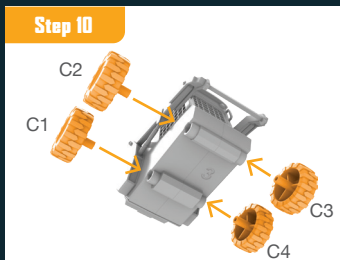
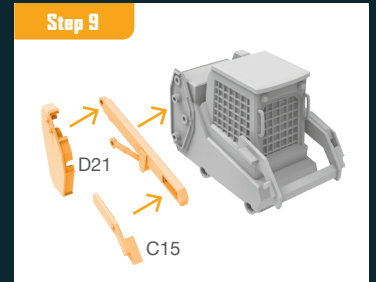
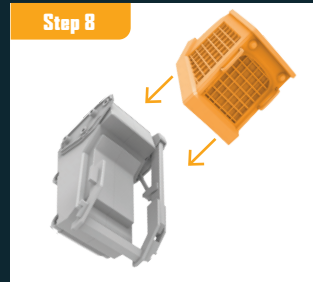
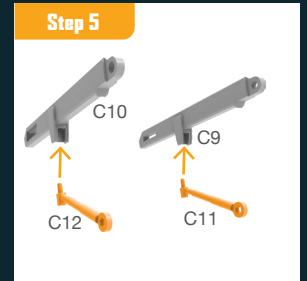
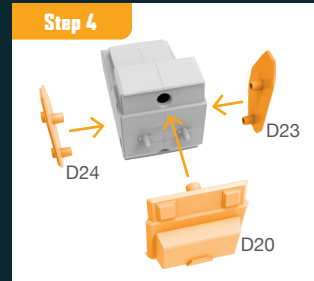
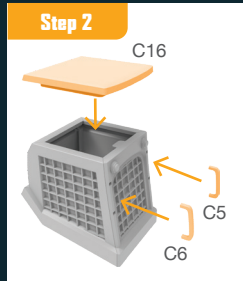
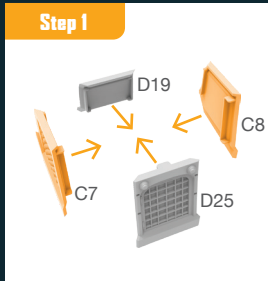
BARREL ASSEMBLY GUIDE



OFFICE ASSEMBLY GUIDE



LOADER ASSEMBLY GUIDE



MIXER ASSEMBLY GUIDE

