

MARVEL

CRISIS

PROTOCOL

MINIATURES GAME

CP 32

READ THIS FIRST

Read through the instruction booklet before assembling your miniatures. Be sure to use a pair of sharp hobby clippers to remove the miniature components from the sprue. Carefully clean the excess material and mold lines with a sharp hobby knife. Check the fit of each part before gluing. Use a small amount of hobby plastic glue to assemble the components. Use caution with all products and follow all manufacturer instructions. Adult supervision is recommended for children under the age of 16. Have fun!

CREDITS

Marvel Crisis Protocol

Game and Character Design

William Shick

Lead Developer

Will Pagani

Sculpting Director

Dallas Kemp

Digital Engineering

Marco Segovia, Michael Jenkins

Sculptor

Dave Kidd

Gael Goumon

Miniature Painting

Brendan Roy

Marketing

Josh Colón

Graphic Design & Photography

Jessy Stetson

Editing

Dan Henderson

Art Director

Zoë Robinson

Director of Licensing

Simone Elliott

Plastics Production Management

Justin Anger, Michael Blomberg

Print Production Management

Liza Lundgren, John Hannasch, Anne Kinner

Publisher

Steve Horvath

Asmodee North America

Licensing Coordinator

Sherry Anisi

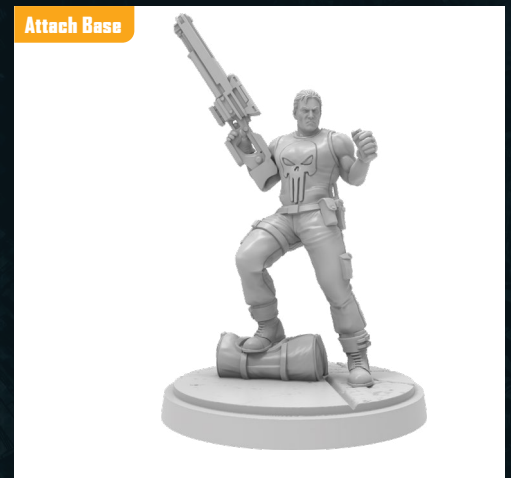
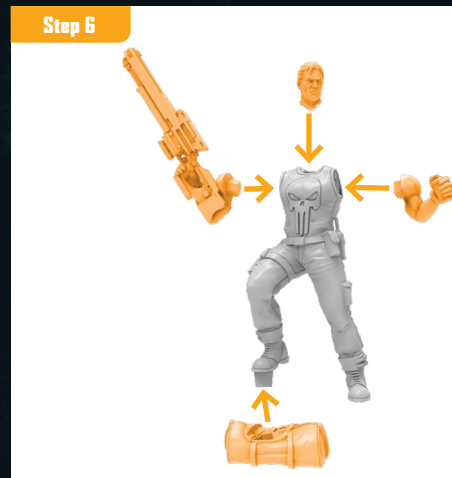
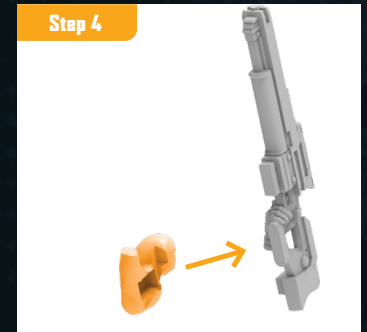
Ariel Brooks

Marvel

Licensing Approvals

Brian Ng

PUNISHER ASSEMBLY GUIDE



TASKMASTER ASSEMBLY GUIDE

