

MARVEL CRISIS PROTOCOL MINIATURES GAME

READ THIS FIRST

Read through the instruction booklet before assembling your miniatures. Be sure to use a pair of sharp hobby clippers to remove the miniature components from the sprue. Carefully clean the excess material and mold lines with a sharp hobby knife. Check the fit of each part before gluing. Use a small amount of hobby plastic glue to assemble the components. Use caution with all products and follow all manufacturer instructions. Adult supervision is recommended for children under the age of 16. Have fun!

CREDITS

Marvel Crisis Protocol

Game and Character Design

William Shick

Lead Developer

Will Pagani

Sculpting Director

Dallas Kemp

Digital Engineering

Marco Segovia, Michael Jenkins

Sculptor

Dave Kidd

Miniature Painting

Brendan Roy, Dallas Kemp

Marketing

Josh Colón

Graphic Design & Photography

Jessy Stetson

Editing

Darla Kennerud

Art Director

Zoë Robinson

Asmodee North America

Licensing Coordinator

Sherry Anisi

Director of Licensing

Simone Elliott

Plastics Production Management

Justin Anger, Michael Blomberg

Print Production Management

Liza Lundgren, John Hannasch, Anne Kinner

Publisher

Steve Horvath

Marvel

Licensing Approvals

Brian Ng

INFINITY GEMS

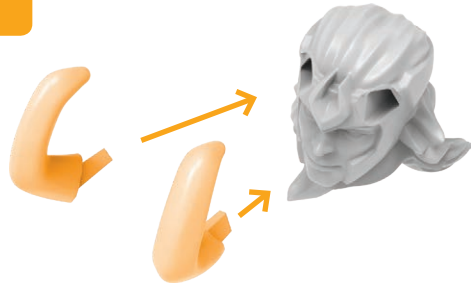


RULES: INFINITY GEMS

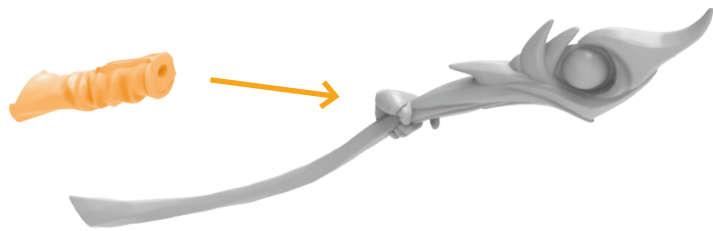
Some characters in Crisis Protocol have the Innate superpower ☼ Gem Bearer. This superpower allows a character to wield a mighty Infinity Gem! This superpower is listed with other keyword superpowers on the character's stat card and indicates which Gems the character may have. Each character may only have one Infinity Gem at a time. To have the option of including Infinity Gems in your squad, you must first include them in your roster. Each Infinity Gem is treated as a character when building your roster, so you will choose a total of ten characters and Infinity Gems combined. A character that has an Infinity Gem increases its Threat Value by the amount listed on the Infinity Gem's card. Place the Infinity Gem's card next to the character's stat card to show they are in possession of the Gem. Each roster may contain only one of each Infinity Gem. During the Power Phase, a character with an Infinity Gem gains one additional Power ⚡ per Gem they have. Each Infinity Gem grants the character that has it a unique superpower found on the Gem's card.

LOKI ASSEMBLY GUIDE

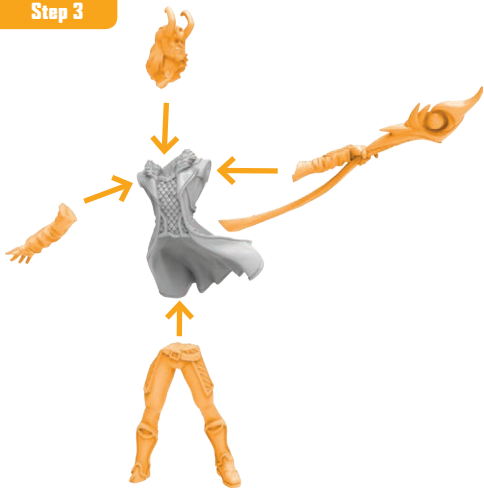
Step 1



Step 2



Step 3



Step 4

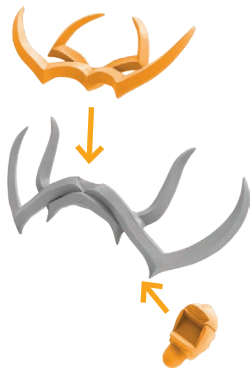


Attach Base

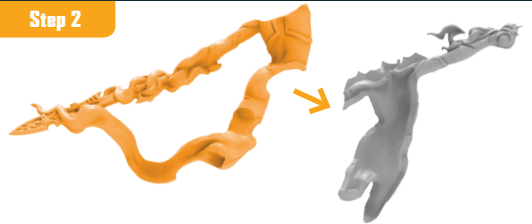


HELA ASSEMBLY GUIDE

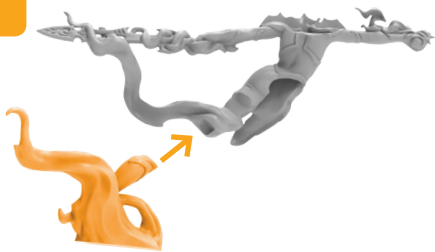
Step 1



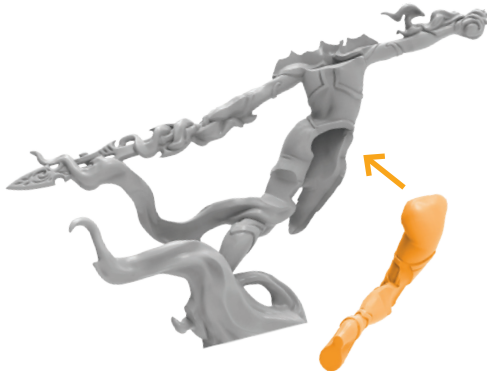
Step 2



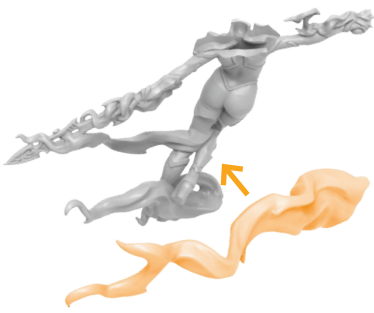
Step 3



Step 4



Step 5



Step 6



Step 7



Attach Base

