

MARVEL

CRISIS PROTOCOL

MINIATURES GAME

CP 09



READ THIS FIRST

Read through the instruction booklet before assembling your miniatures. Be sure to use a pair of sharp hobby clippers to remove the miniature components from the sprue. Carefully clean the excess material and mold lines with a sharp hobby knife. Check the fit of each part before gluing. Use a small amount of hobby plastic glue to assemble the components. Use caution with all products and follow all manufacture instructions. Adult supervision is recommended for children under the age of 16. Have fun!

CREDITS

Marvel Crisis Protocol
Game and Character Design
William Shick
Lead Developer
Will Pagani
Sculpting Director
Dallas Kemp
Digital Engineering
Marco Segovia
Sculptor
Marco Segovia
Miniature Painting
Brendan Roy
Graphic Design & Photography
Jessy Stetson
Editing
Darla Kennerud
Art Director
Zoë Robinson

Asmodee North America
Licensing Coordinator
Sherry Anisi
Licensing Manager
Simone Elliott
Plastics Production Management
Justin Anger, Michael Blomberg
Print Production Management
John Hannasch, Liza Lundgren
Publisher
Steve Horvath

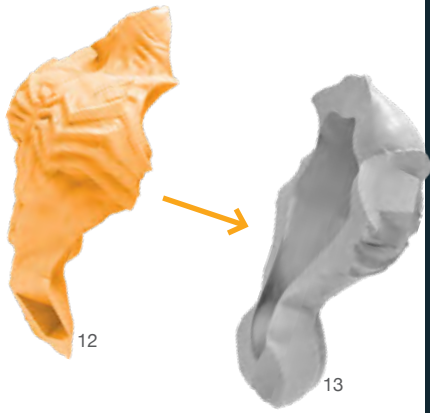
Marvel
Licensing Approvals
Brian Ng



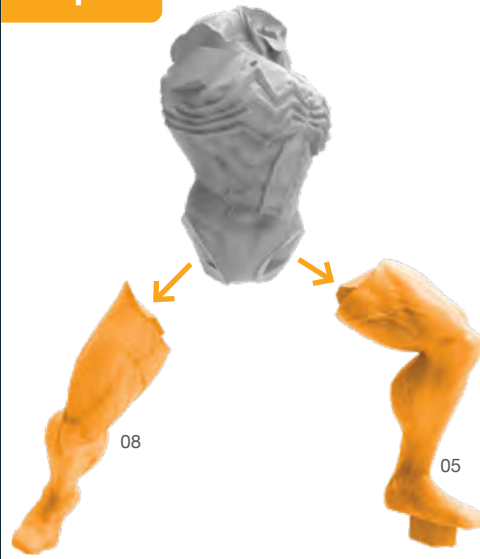
Atomic Mass Games and logo are TM of Atomic Mass Games. Atomic Mass Games, 1995 County Road B2 W, Roseville, MN, 55113, USA, 1-651-639-1905. Actual components may vary from those shown.

VENOM ASSEMBLY GUIDE

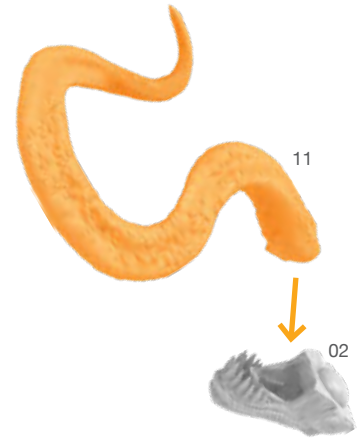
Step 1



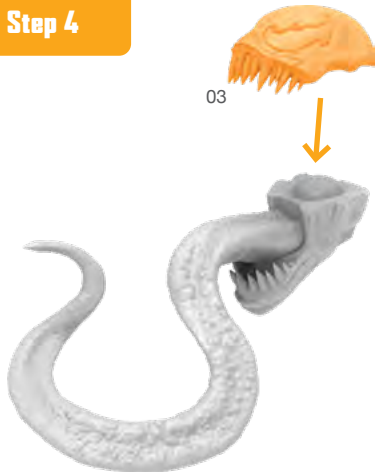
Step 2



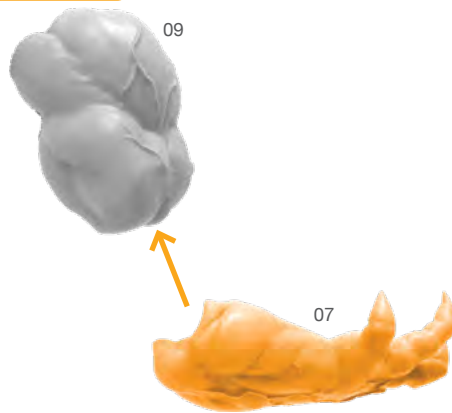
Step 3



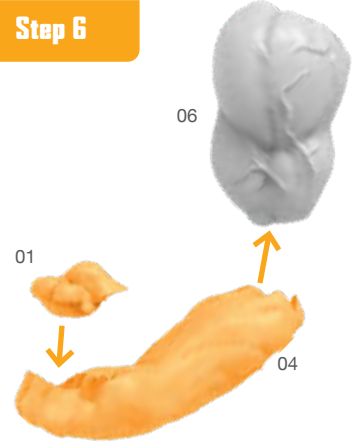
Step 4



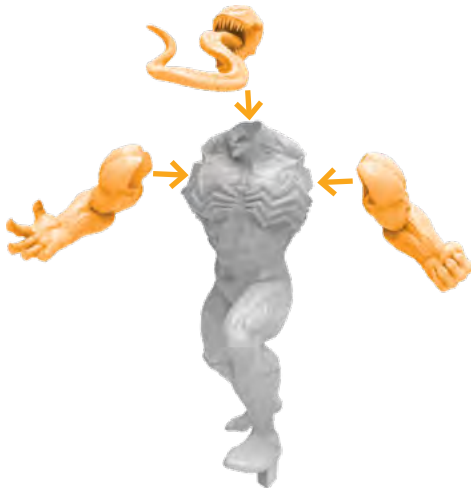
Step 5



Step 6



Step 7



Step 8



Attach Base

