



**STAR
WARS**TM

LEGIONTM

MINIATURE ASSEMBLY DIAGRAMS

The miniatures included in *STAR WARS: LEGION* require some assembly. Players must use glue to attach the miniatures to their bases, and attach some parts together securely. We recommend super glue to assemble these miniatures quickly. Players should read all safety instructions included with any glue or other hobby materials they choose to use for assembly, and read page 28 for additional instructions and tips.

To assemble the miniatures, follow these steps:

1. Sort the parts for each type of miniature as shown below.
2. Assemble each miniature using the correct parts.
3. Allow any glue used during assembly to dry.

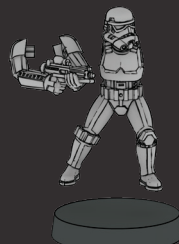


LUKE SKYWALKER
SWL_0001

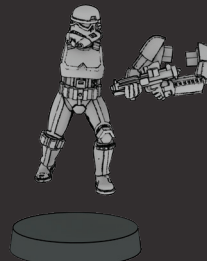
DARTH VADER
SWL_0002



STORMTROOPER
SWL_0003



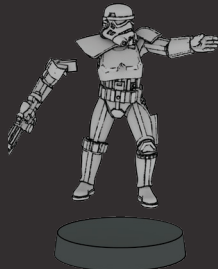
STORMTROOPER
SWL_0004



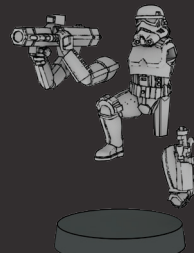
STORMTROOPER
SWL_0005



STORMTROOPER
SWL_0006



STORMTROOPER UNIT LEADER
SWL_0007



HH-12 STORMTROOPER
SWL_0008



DLT-19 STORMTROOPER
SWL_0009



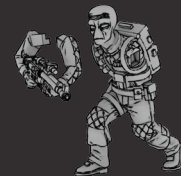
REBEL TROOPER
SWL_0010



REBEL TROOPER
SWL_0011



REBEL TROOPER
SWL_0012



REBEL TROOPER
SWL_0013



REBEL TROOPER UNIT LEADER
SWL_0014



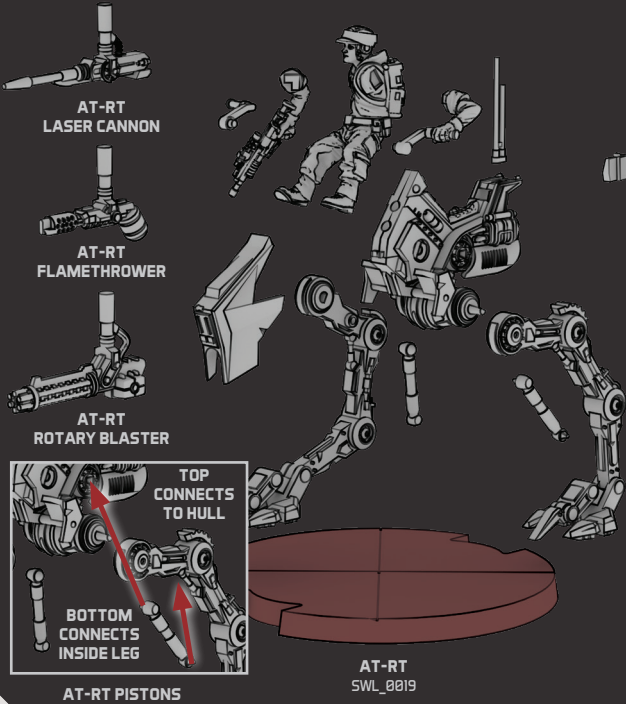
MPL-57 ION TROOPER
SWL_0015



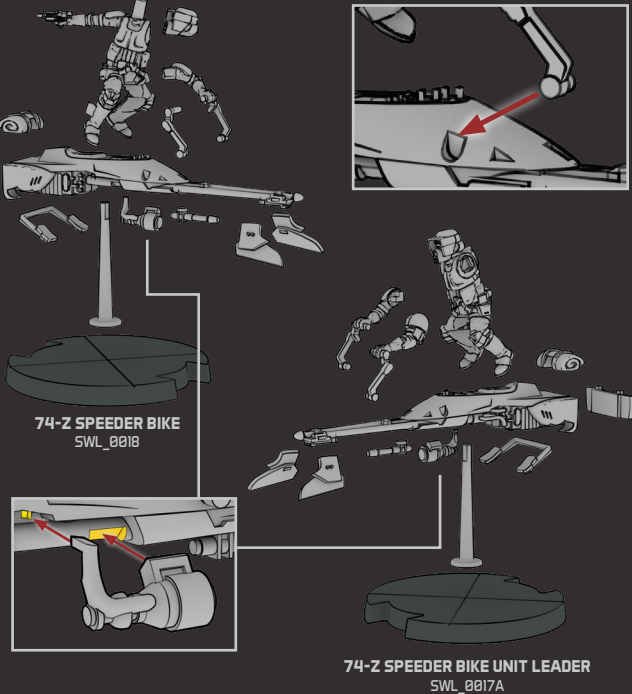
Z-6 TROOPER
SWL_0016

MINIATURE ASSEMBLY DIAGRAMS (CONTINUED)

AT-RT WEAPON OPTIONS

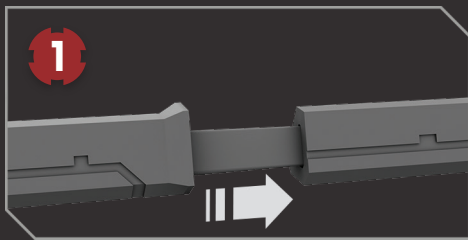


SPEEDER BIKE HANDLEBARS

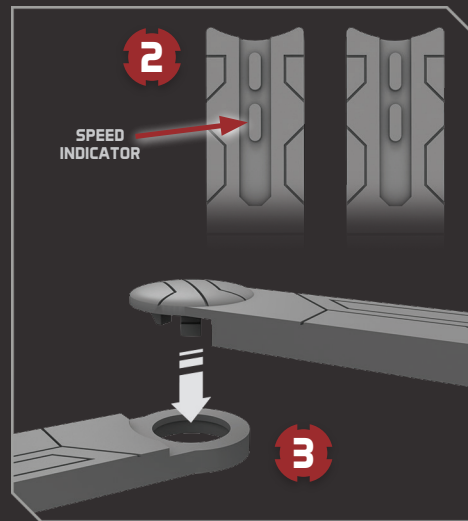


MOVEMENT TOOL AND RANGE RULER ASSEMBLY

- To assemble the range ruler, connect the peg ends to the receiver ends.



- To assemble the movement tools, first pair the two halves of each movement tool using the corresponding speed indicator symbols. These are the capsule-shaped raised areas near the concave ends of the movement tool pieces.
- Connect the two halves of each movement tool, as shown.



ASSEMBLED RANGE RULER & MOVEMENT TOOLS



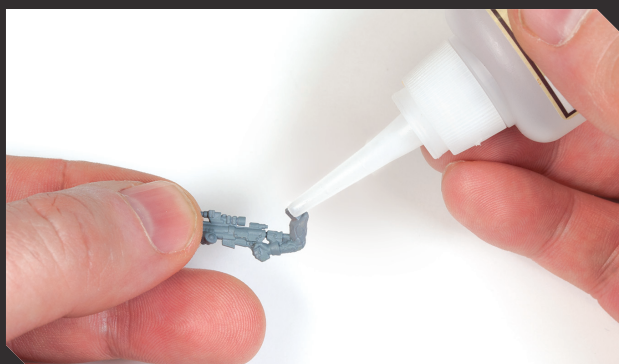
ASSEMBLING YOUR MINIATURES



The miniatures in the core set are divided up into separate bags for each pose. We suggest that you assemble the minis one pose at a time to avoid mixing up the components, as the arm and body configurations are specific. Separate out all of the bases into red and grey colors. The Imperial minis go on the grey bases and the Rebel minis go on the red bases.



Next, clean each component of any mold lines or small, extra material from the casting process with a hobby knife. A sharp blade will more easily cut through the plastic. Follow the seam around the mini, removing the mold line as you go. Mind your fingers and cut away from yourself to avoid injury.



Test fit the pieces before gluing to make sure they fit well together. Trim them as needed for a better fit. Place a dab of super glue onto the component you want to attach.



Press the components together and hold for about 10 seconds. Super glue the miniature to the base and set the mini aside to allow the glue to cure.



If you happen upon any components that are bent or misshapen, you can correct them with hot water. Simply submerge the bent component in hot water for about ten seconds.



Take it out of the water and straighten the component by hand. As the plastic cools, it will retain the corrected shape. It helps to have a second cup of cold water nearby into which you can drop the straightened piece. This hastens the cooling process.

PREPARING YOUR MINIATURES FOR PAINTING



To add to the look of your miniatures, you can apply texture to the base to represent the "earth" upon which the mini stands. This step is called basing. Basing your miniatures before you prime them will help secure the basing material for when you paint it later. Apply white glue to the base with a brush and then submerge the base in a shallow container filled with your basing material. A mixture of sand and small rocks works well.



Before you paint your minis, you should apply a primer to help the paint adhere and increase the durability of your paint job. When selecting a spray primer, choose a flat finish primer. Gloss or satin primers are not recommended. Prepare your priming area with a backdrop and spray your miniatures from about ten inches away. When a mini is dry, lay it down to spray any recessed areas that were missed. Repeat this process until the entirety of the mini has a thin and even layer of primer.

PAINTING YOUR MINIATURES

Painting miniatures may seem like a daunting task to the uninitiated. Thankfully, there are a huge variety of resources online to inform you about paints, techniques, and procedures to help you on your way to painting your first minis. Though tutorial videos and documents are very useful to learn more about miniature painting, often the best way to learn is to sit down with an experienced painter at your local gaming store to get some pointers firsthand. Try talking to your store owner about setting up a recurring paint night where players can get together and work on their minis as a group. It's a fun way to learn more about painting and get your miniatures ready for the tabletop.

The images below show the standard approach that many minis painters use when painting their minis. The process starts with a primed mini followed by basecoats of acrylic paint. Then, washes are used to define the recessed areas, followed by layering highlights to increase contrast. Painting the base and tidying up mistakes follows. Finally, a detail step addresses the finishing touches that really make the mini look great.

Whether you want to paint your minis as movie-accurate representations or invent color schemes of your own, there is an inexhaustible amount of online reference material to refer to. Be sure to post your progress on the Fantasy Flight Games forums where many like-minded players will be sharing ideas, tips, and techniques.



Primed



Basecoated



Washed



Layered



Detailed