

# MARVEL

# CRISIS PROTOCOL

## MINIATURES GAME

CP 07



### READ THIS FIRST

Read through the instruction booklet before assembling your miniatures. Be sure to use a pair of sharp hobby clippers to remove the miniature components from the sprue. Carefully clean the excess material and mold lines with a sharp hobby knife. Check the fit of each part before gluing. Use a small amount of hobby plastic glue to assemble the components. Use caution with all products and follow all manufacture instructions. Adult supervision is recommended for children under the age of 16. Have fun!

## CREDITS

### Marvel Crisis Protocol

#### Game and Character Design

William Shick

#### Lead Developer

Will Pagani

#### Sculpting Director

Dallas Kemp

#### Digital Engineering

Marco Segovia, Michael Jenkins

#### Sculptor

Michael Jenkins

#### Miniature Painting

Brendan Roy

#### Marketing

Josh Colón

#### Graphic Design & Photography

Jessy Stetson

#### Editing

Darla Kennerud

#### Art Director

Zöe Robinson

#### Asmodee North America

#### Licensing Coordinator

Sherry Anisi

#### Licensing Manager

Simone Elliott

#### Plastics Production Management

Justin Anger, Michael Blomberg

#### Print Production Management

John Hannasch, Liza Lundgren

#### Publisher

Steve Horvath

#### Marvel

#### Licensing Approvals

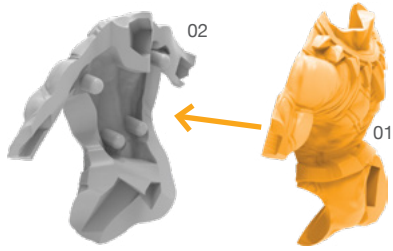
Brian Ng



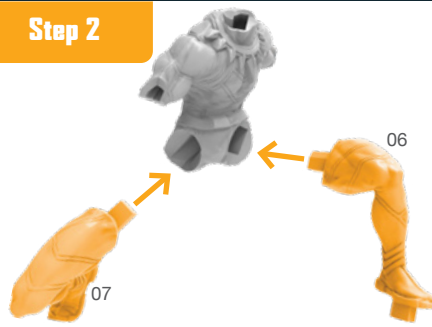
Atomic Mass Games and logo are TM of Atomic Mass Games. Atomic Mass Games, 1995 County Road B2 W, Roseville, MN, 55113, USA, 1-651-639-1905. Actual components may vary from those shown.

# BLACK PANTHER ASSEMBLY GUIDE

Step 1



Step 2



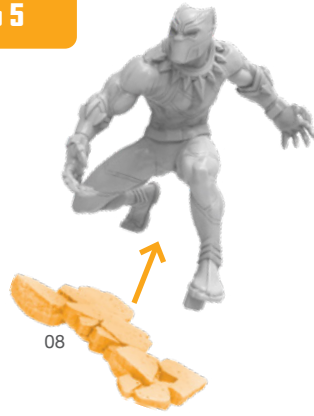
Step 3



Step 4



Step 5

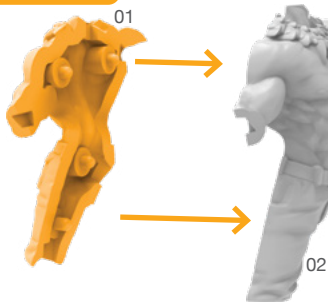


Attach Base



# KILLMONGER ASSEMBLY GUIDE

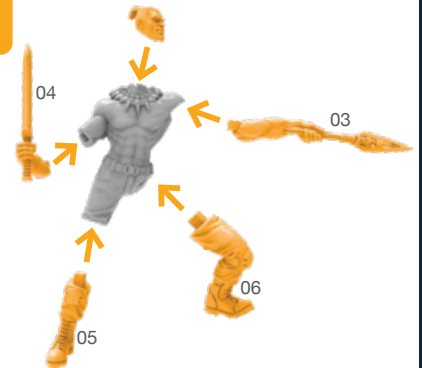
Step 1



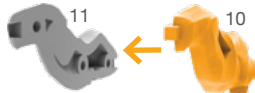
Step 2



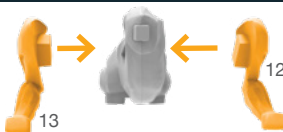
Step 3



Step 4



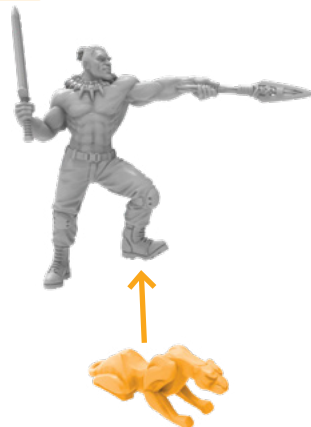
Step 5



Step 6



Step 7



Attach Base

